

# Spearhead

## MULTICUT 430



Edition 1.3 – June 2016

Part No. 8999080

## PARTS MANUAL

# Spearhead MULTICUT 430

---

## Contents

Ordering your Parts.....	2
S180043.21 – Centre Deck.....	3
S180043.22 – LH Wing Deck.....	4
S180043.23 – RH Wing Deck.....	5
S180043.11 – Std Wheel Arm.....	6
S180043.25 – Wide Wheel Arm.....	8
S180043.06 – Headstock.....	10
S180043.09 – Hydraulics.....	11
S180043.12 – Wing Ram.....	12
S180043.13 – No Light Kit.....	13
S180043.15 – Rear Light Kit.....	14
S180043.26 – Drivelines.....	15
5770582 – Input Shaft.....	16
5770583 – Wing Shaft.....	18
S180043.08 – Gearboxes.....	20
Gearbox + Blade Timing and Rotation.....	21
46979.01 – Centre Gearbox.....	22
5770539 – Wing Gearbox.....	24
S180043.04 – LH Rotor Assy.....	26
S180043.05 – RH Rotor Assy.....	27
S180043.10 – Decals MC430.....	28
Optional Kits:	
OPT0866 – Baffle Kit – Front.....	30
OPT0839 – Baffle Kit – Rear.....	30

# Spearhead MULTICUT 430

---

## Ordering Your Part's

When ordering parts please refer to your parts list to help your dealer with your order.

Part number and quantity

Description

Machine model number

Serial number of the machine

Delivery instructions (e.g. next day).

Delivery is normally via carrier direct to your dealer. Please check with your dealer for stock availability and arrangement of dispatch. Ensure you or your dealer has sufficient cover for parts requirement outside factory hours.

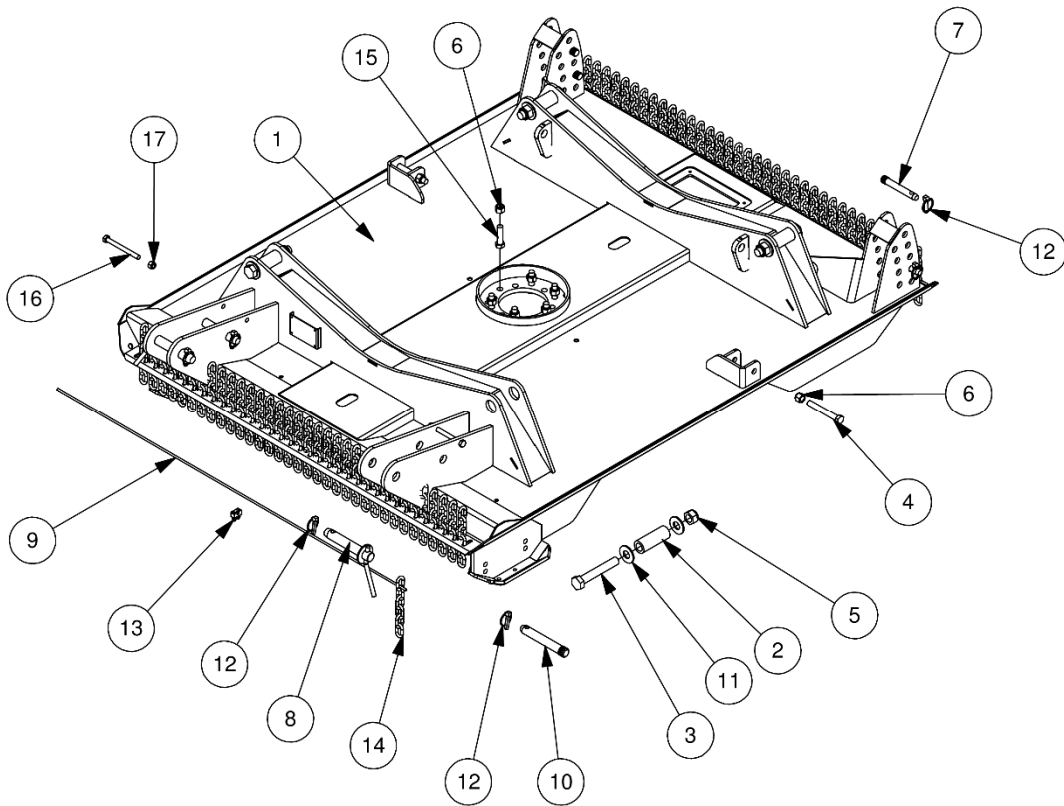
When ordering your seal kits please quote both codes stamped on the base of the cylinder.

### Important Note

The information contained in this manual is correct at the time of publication. However, in the course of constant development, changes in specification are inevitable. Should you find the information given in this book different to the machine it relates to, please contact the "After Sales Department" for advice.

# Spearhead MULTICUT 430

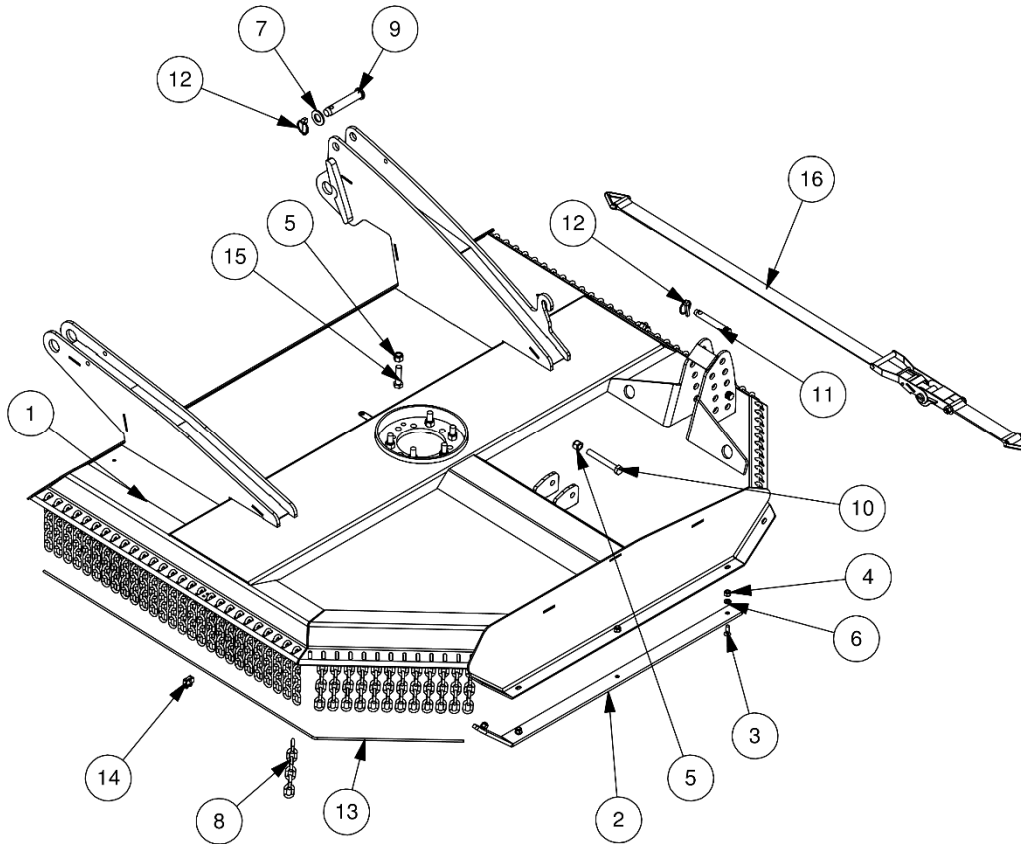
## S180043.2I – CENTRE DECK



ITEM NO.	PART NO.	DESCRIPTION.	QTY.
1	181511	CENTRE DECK	1
2	181314	TUBE	4
3	2770365	BOLT	4
4	2770399	BOLT	2
5	2770414	NYLOCK NUT	4
6	2770447	NYLOCK NUT	8
7	6310202	TOP LINK PIN	4
8	6310208	PIN WITH HANDLE	2
9	6770960	WIRE ROPE	2
10	6310235	TOP LINK PIN	2
11	181333	WASHER	8
12	00.372.01	LYNCH PIN	8
13	6770907	WIRE ROPE GRIP	2
14	8770621	SKIRT CHAIN – 6 LINK	71
15	2770426	BOLT	6
16	9213266	BOLT	2
17	2770417	NYLOCK NUT	2

# Spearhead MULTICUT 430

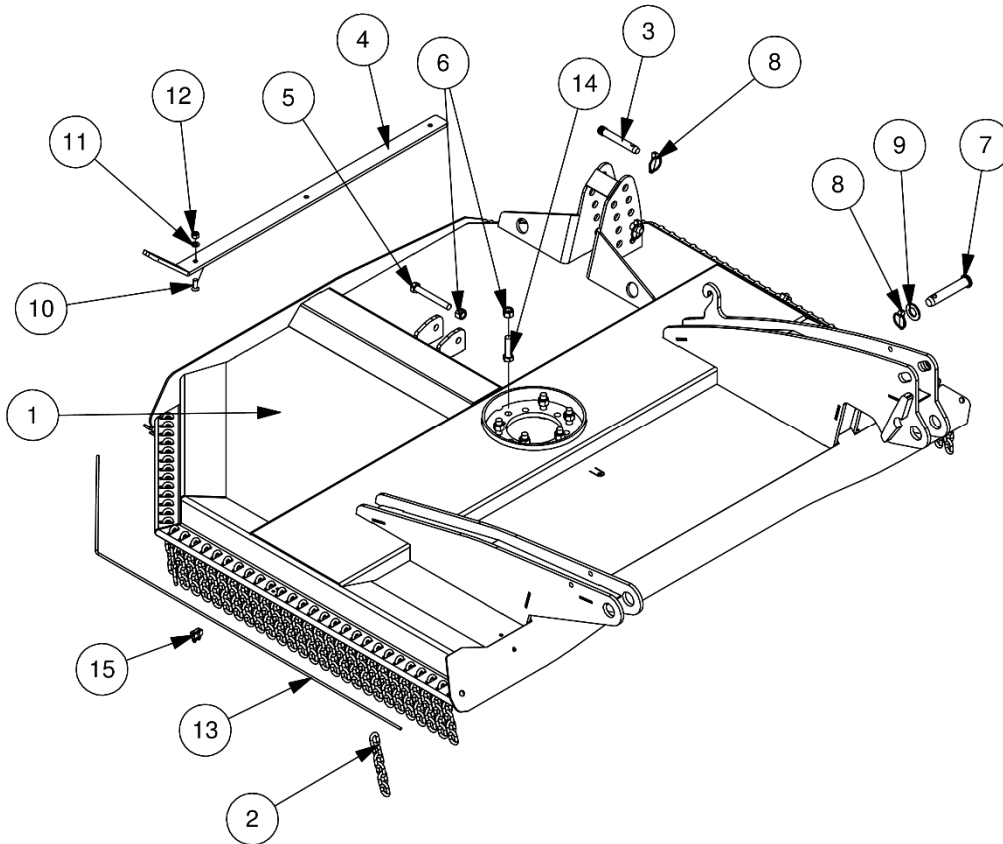
## SI80043.22 – LH WING DECK



ITEM NO.	PART NO.	DESCRIPTION.	QTY.
1	181512	LH WING DECK	1
2	181764	SKID - CURRENT	1
	181315	SKID - ORIGINAL	-
3	2770520	SKT CSK SCREW	4
4	2770412	NYLOCK NUT	4
5	2770447	NYLOCK NUT	7
6	2770434	FLAT WASHER	4
7	05.281.16	FLAT WASHER	1
8	8770621	SKIRT CHAIN – 6 LINK	79
9	6310261	TOP LINK PIN	1
10	2770399	BOLT	1
11	6310202	TOP LINK PIN	2
12	00.372.01	LYNCH PIN	3
13	6770961	WIRE ROPE	2
14	6770907	WIRE ROPE GRIP	2
15	2770423	BOLT	6
16	6310256	RATCHET STRAP	1

# Spearhead MULTICUT 430

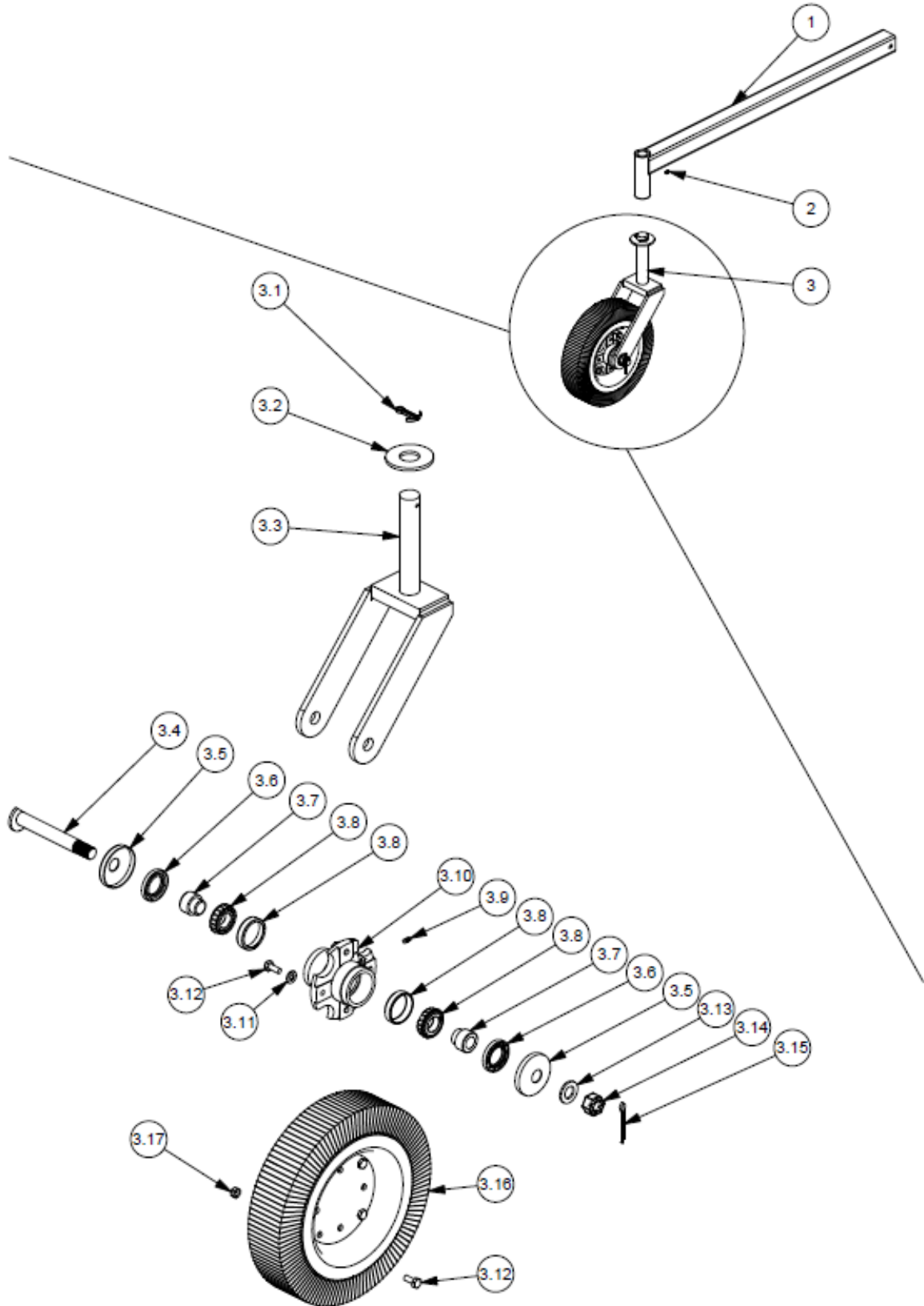
## SI80043.23 - RH WING DECK



ITEM NO.	PART NO.	DESCRIPTION.	QTY.
1	181513	RH WING DECK	1
2	8770621	SKIRT CHAIN - 6 LINK	79
3	6310202	TOP LINK PIN	2
4	181764	SKID - CURRENT	1
	181315	SKID - ORIGINAL	-
5	2770399	BOLT	1
6	2770447	NYLOCK NUT	7
7	6310261	TOP LINK PIN	1
8	00.372.01	LYNCH PIN	3
9	05.281.16	FLAT WASHER	1
10	2770520	SKT CSK SCREW	4
11	2770434	FLAT WASHER	4
12	2770412	NYLOCK NUT	4
13	6770961	WIRE ROPE	2
14	2770423	BOLT	6
15	6770907	WIRE ROPE GRIP	2

# Spearhead MULTICUT 430

## SI80043.II - STD WHEEL ARM



# Spearhead MULTICUT 430

---

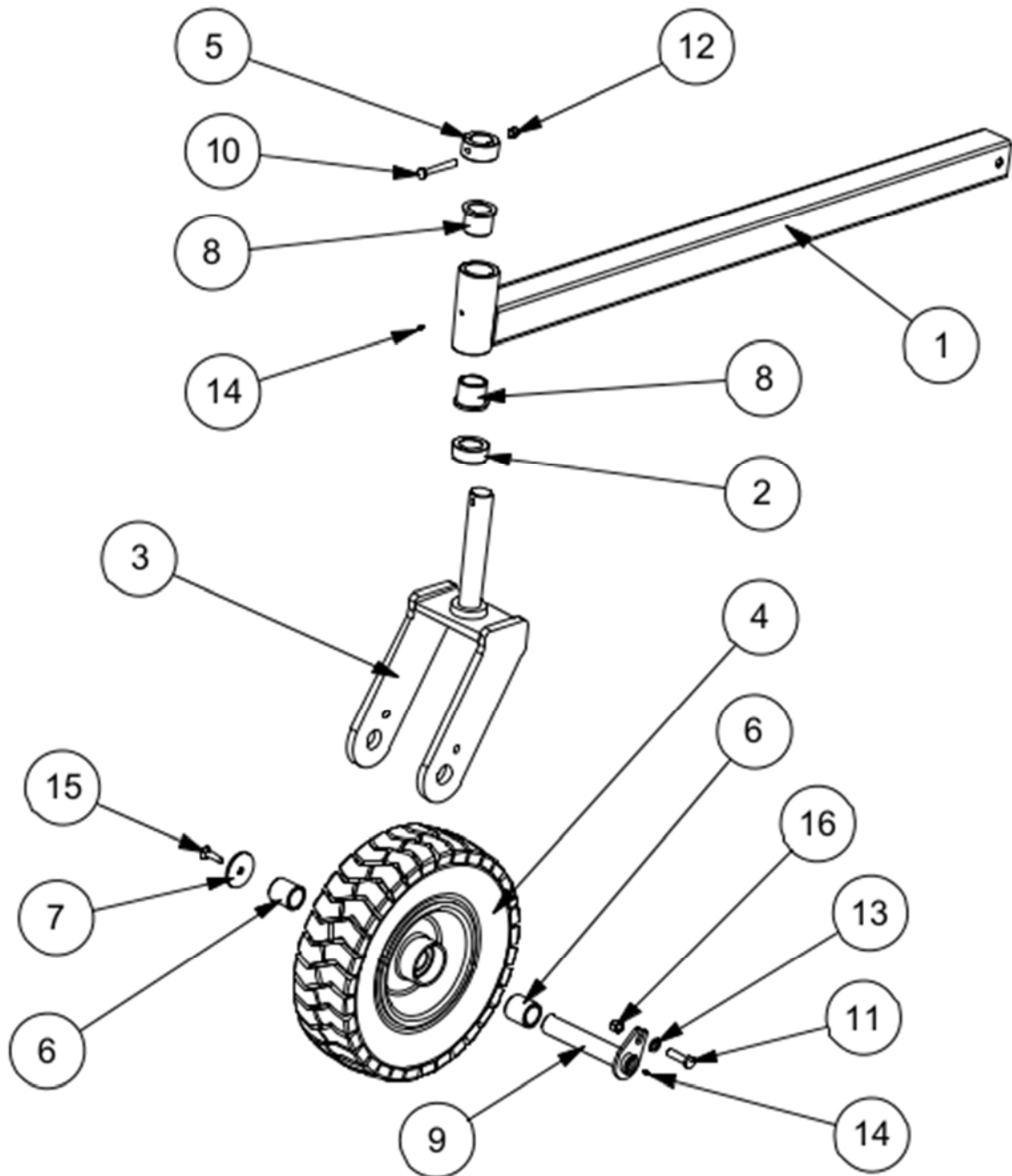
## S180043.II – STD WHEEL ARM

ITEM NO.	PART NO.	DESCRIPTION.	QTY.
1	00763808R	WHEEL ARM	1
2	2770468	GREASE NIPPLE	1
3	1028307	FORK AND WHEEL ASSY	1
3.1	1020551	COTTER PIN	1
3.2	1020552	FLAT WASHER	1
3.3	1028308	WHEEL FORK	1
3.4	1020546	SPINDLE BOLT	1
3.5	1020544	DUST CAP	2
3.6	1020545	OIL SEAL	2
3.7	1020543	STEP BUSHING	2
3.8	1020541	BEARING ASSY	2
3.9	2770467	GREASE NIPPLE	1
3.10	1020540	HUB	1
3.11	1020542	FLAT WASHER	4
3.12	2770407	BOLT	8
3.13	2770464	FLAT WASHER	1
3.14	1020547	SPINDLE NUT	1
3.15	0503165	COTTER PIN	1
3.16	1020532	WHEEL ASSEMBLY	1
3.17	2770438	FULL NUT	4



# Spearhead MULTICUT 430

## SI80043.25 – WIDE WHEEL ARM



# Spearhead MULTICUT 430

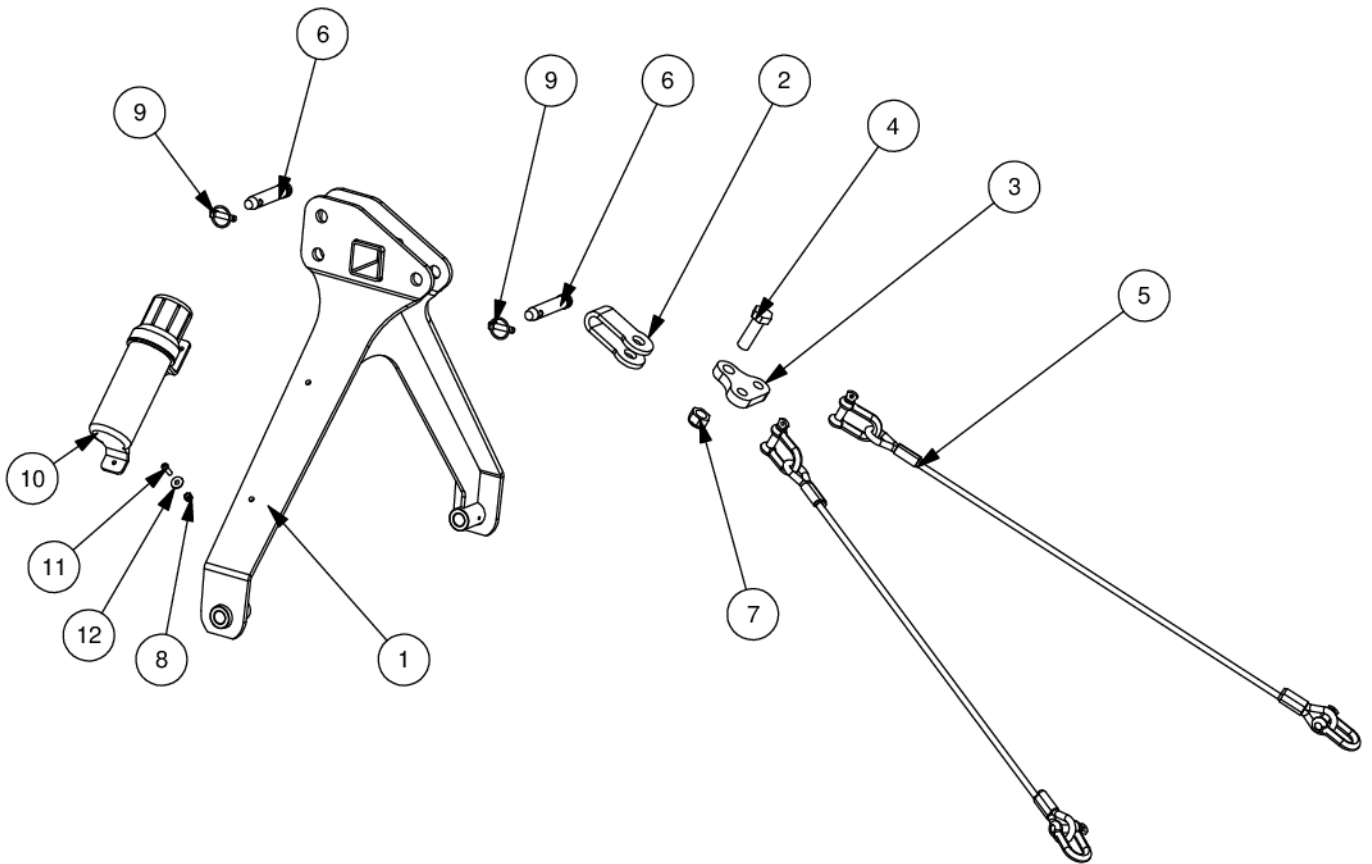
---

## S180043.25 – WIDE WHEEL ARM

ITEM NO.	PART NO.	DESCRIPTION.	QTY.
1	181906	WHEEL ARM	1
2	1777524	SPACER	1
3	1770399A	WHEEL YOKE	1
4	6770680B	WHEEL ASSY	1
4.1	4770816A	BEARING	2
5	1777700	TOP YOKE BUSH	1
6	1560131	WHEEL SPACER BUSH	2
7	1777208	65MM RETAINING WASHER	1
8	4600127-A	TOP HAT BUSH	2
9	1560130	PEAR PIN	1
10	05.292.11	BOLT	1
11	2770397	BOLT	1
12	2770412	NYLOCK NUT	1
13	2770436	FLAT WASHER	1
14	2770467	GREASE NIPPLE	2
15	2770398	SKT CSK SCREW	1
16	2770417	NYLOCK NUT	1

# Spearhead MULTICUT 430

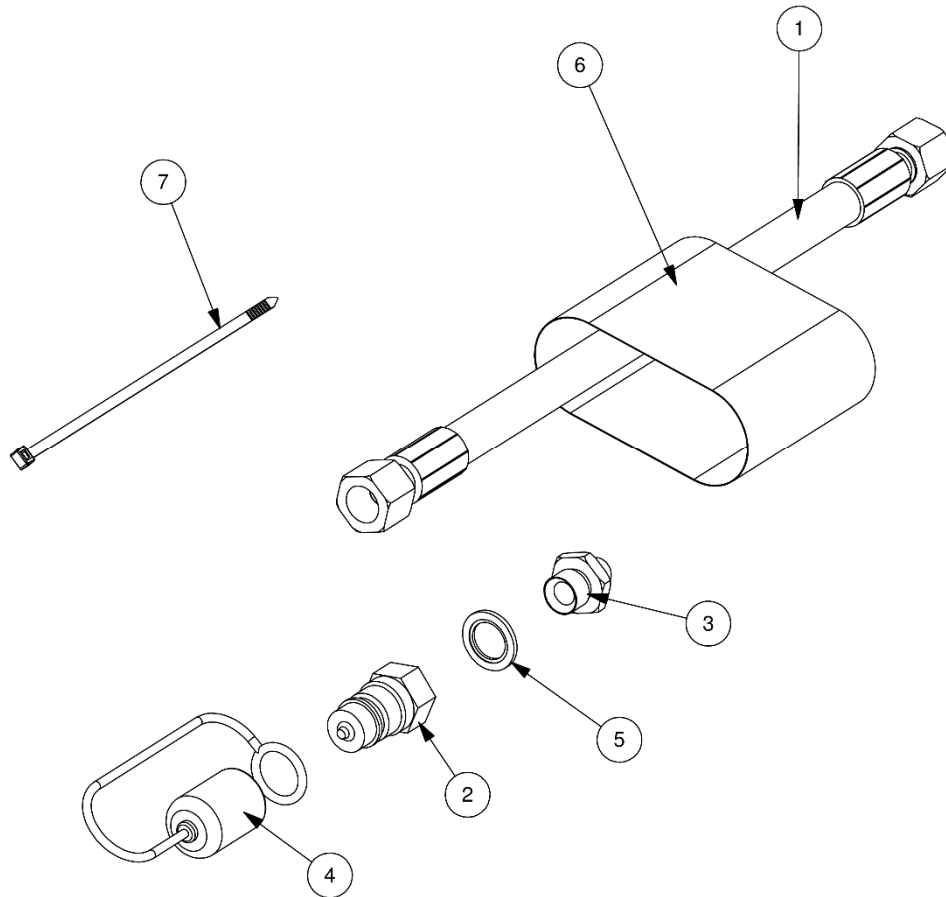
## SI80043.06 – HEADSTOCK



ITEM NO.	PART NO.	DESCRIPTION.	QTY.
1	1800049	HEADSTOCK	1
2	1560120	PULLEY BRACKET	1
3	181317	BALANCE BAR	1
4	2770413	BOLT	1
5	6770962	HEADSTOCK CABLE	2
6	6310203	TOP LINK PIN	2
7	2770414	NYLOCK NUT	1
8	2770416	NYLOCK NUT	2
9	00.372.01	LYNCH PIN	2
10	46505.01	LITERATURE HOLDER	1
11	2770368	SKT BUTTON SCREW	2
12	2770244	REPAIR WASHER	2

# Spearhead MULTICUT 430

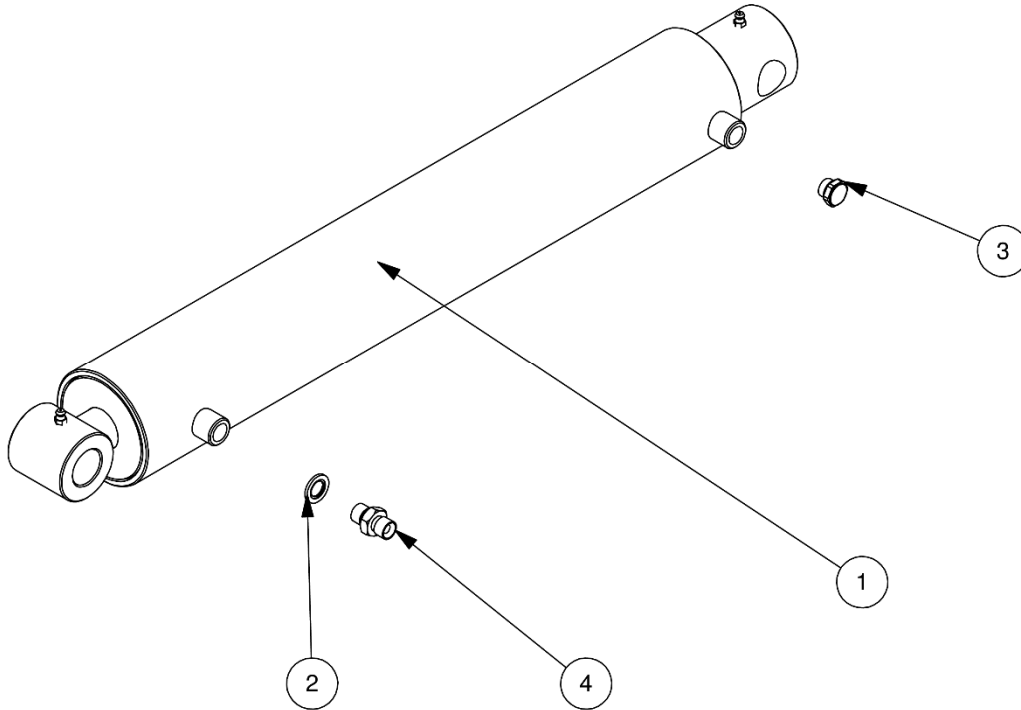
SI80043.09 – HYDRAULICS



ITEM NO.	PART NO.	DESCRIPTION.	QTY.
1	3760102	HOSE	1
2	3750153	MALE QUICK REL PROBE	1
3	3250154	ADAPTOR	1
4	3700236	DUST CAP - RED	1
5	3260072	SEAL	1
6	43543.16	HOSE SLEEVE	1

# Spearhead MULTICUT 430

## SI80043.I2 – WING RAM

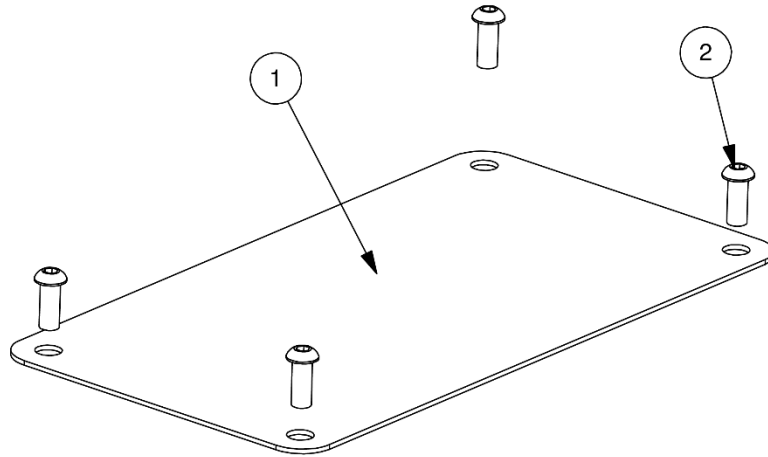


ITEM NO.	PART NO.	DESCRIPTION.	QTY.
1	3580716	HYD RAM	1
2	3260070	SEAL	1
3	3570659	BREATHER	1
4	3360080	ADAPTOR	1
-	3580716.01	SEAL KIT	-

# Spearhead MULTICUT 430

---

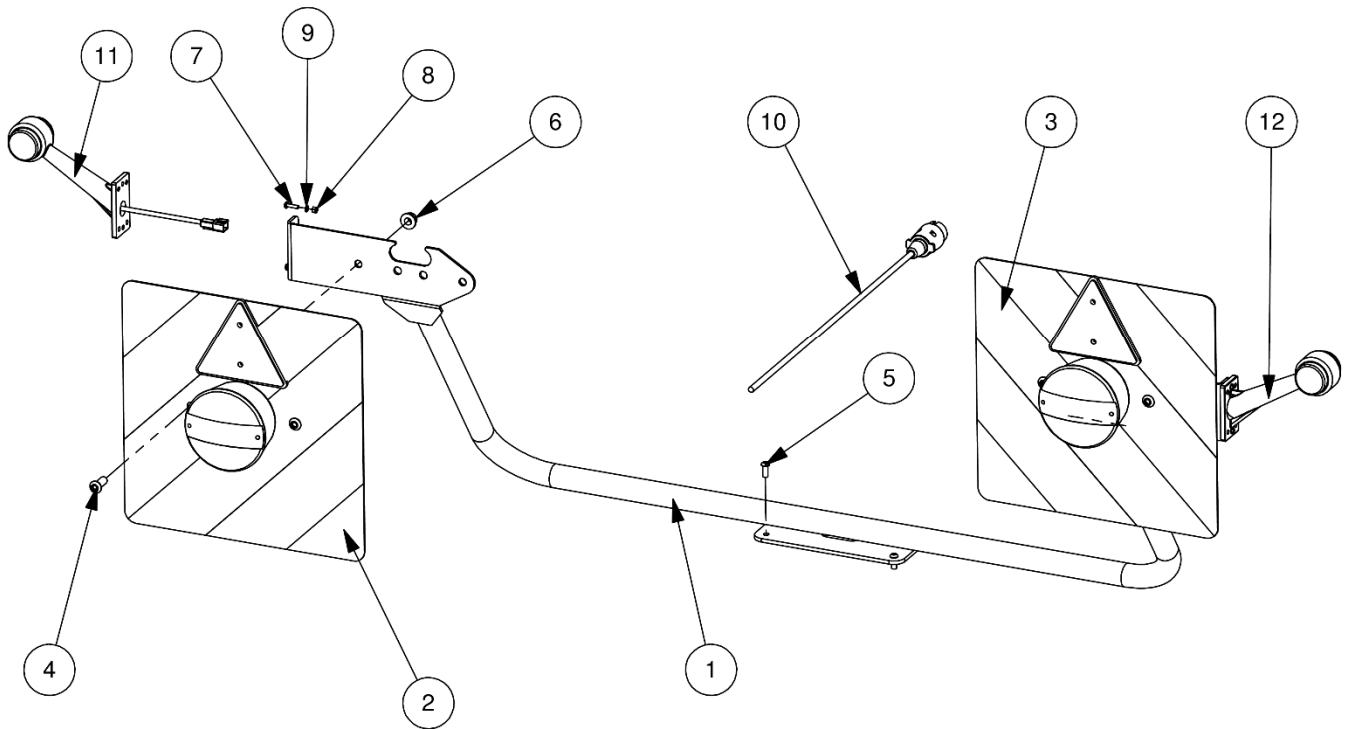
S180043.I3 – NO LIGHT KIT



ITEM NO.	PART NO.	DESCRIPTION.	QTY.
1	181318	COVER PLATE	1
2	2770589	SKT BUTTON SCREW	4

# Spearhead MULTICUT 430

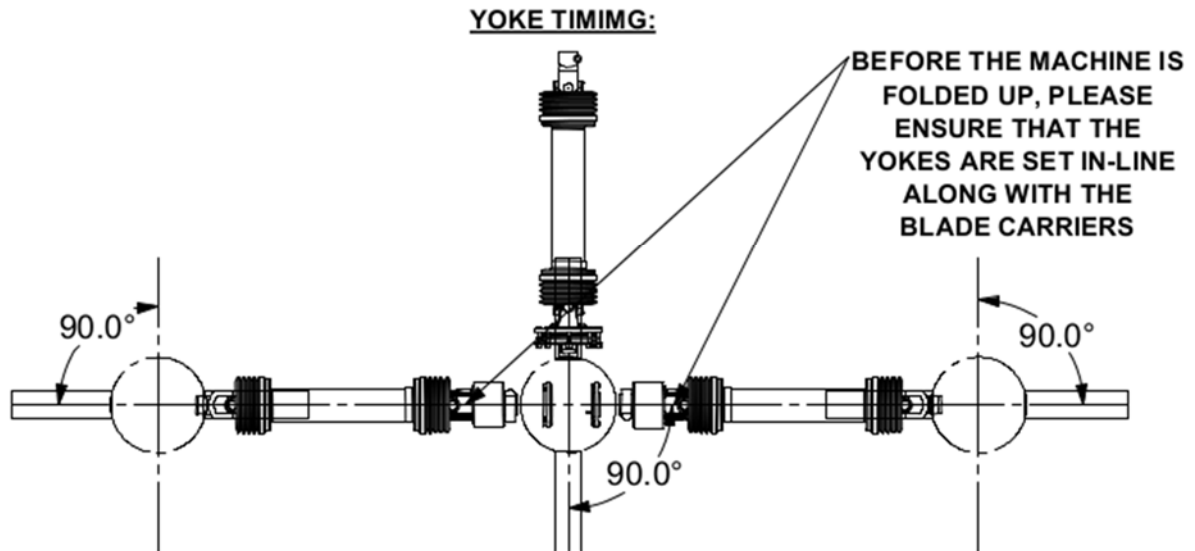
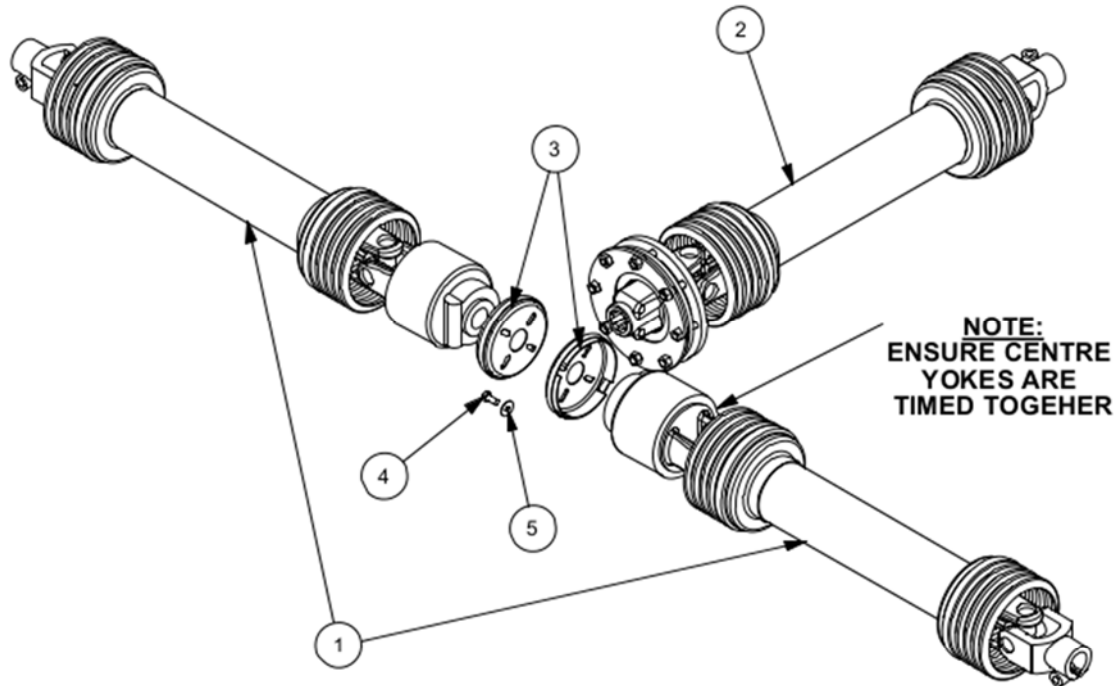
## SI80043.I5 – REAR LIGHT KIT



ITEM NO.	PART NO.	DESCRIPTION.	QTY.
1	181319	LIGHT FRAME	1
2	8770835	LH MARKER BOARD	1
3	8770836	RH MARKER BOARD	1
4	05.625.10	SKT BUTTON SCREW	4
5	2770589	SKT BUTTON SCREW	4
6	05.287.22	FLANGED NYLOCK NUT	4
7	05.961.03	PAN HEAD SCREW	4
8	2770397	NYLOCK NUT	4
9	2770391	FLAT WASHER	4
10	8770837	LOOM	1
11	8770828	LH MARKER LIGHT	1
12	8770829	RH MARKER LIGHT	1

# Spearhead MULTICUT 430

## S180043.26 – DRIVELINES

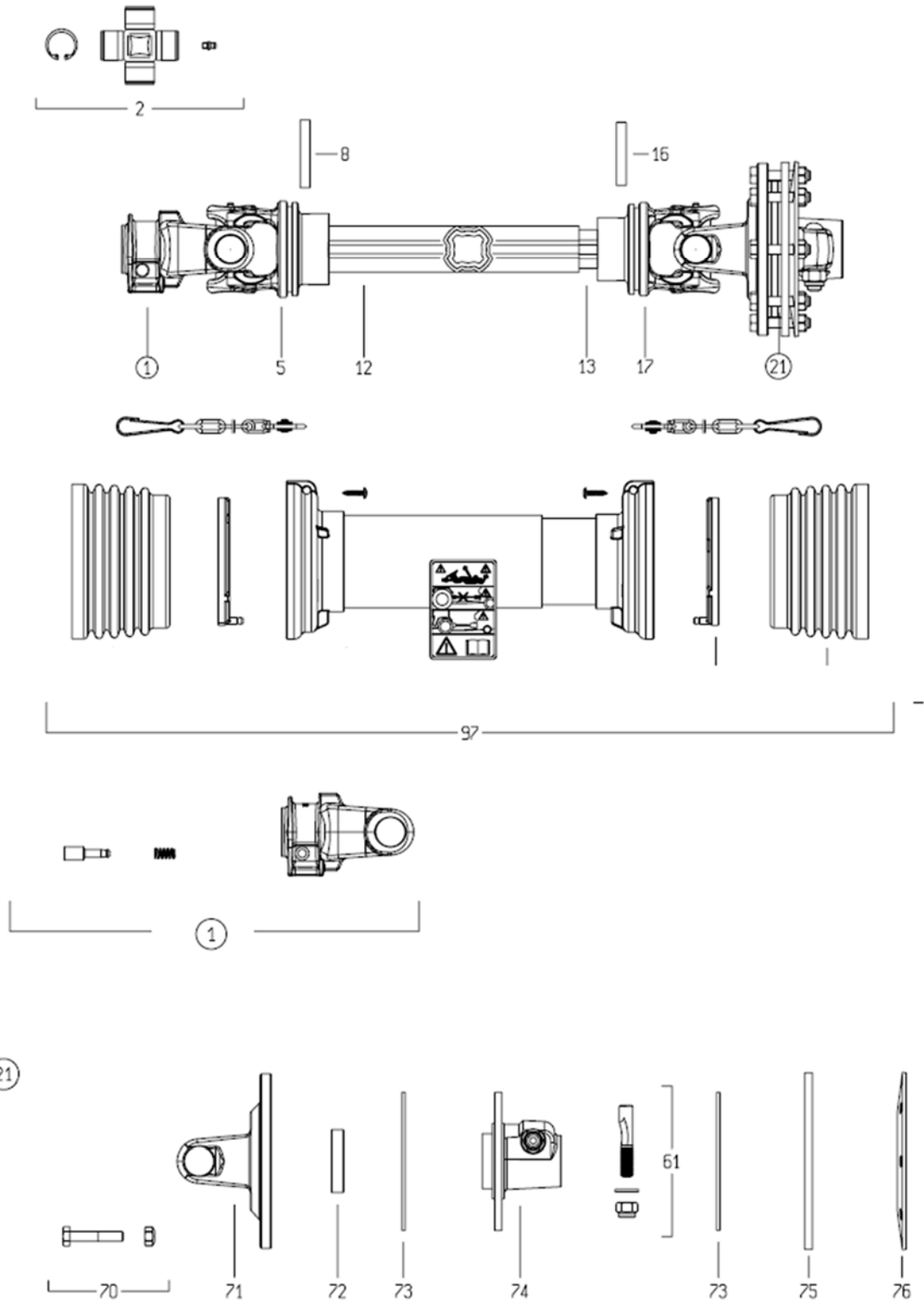


ITEM NO.	PART NUMBER	DESCRIPTION	QTY.
1	5770583	WING SHAFT	2
2	5770582	INPUT SHAFT	1
3	5770549	PLATE AND CLIP	2
4	2772289	M8 X 80 SET SCREW	8
5	2770244	FLATWASHER	8



# Spearhead MULTICUT 430

## 5770582 – INPUT SHAFT



# Spearhead MULTICUT 430

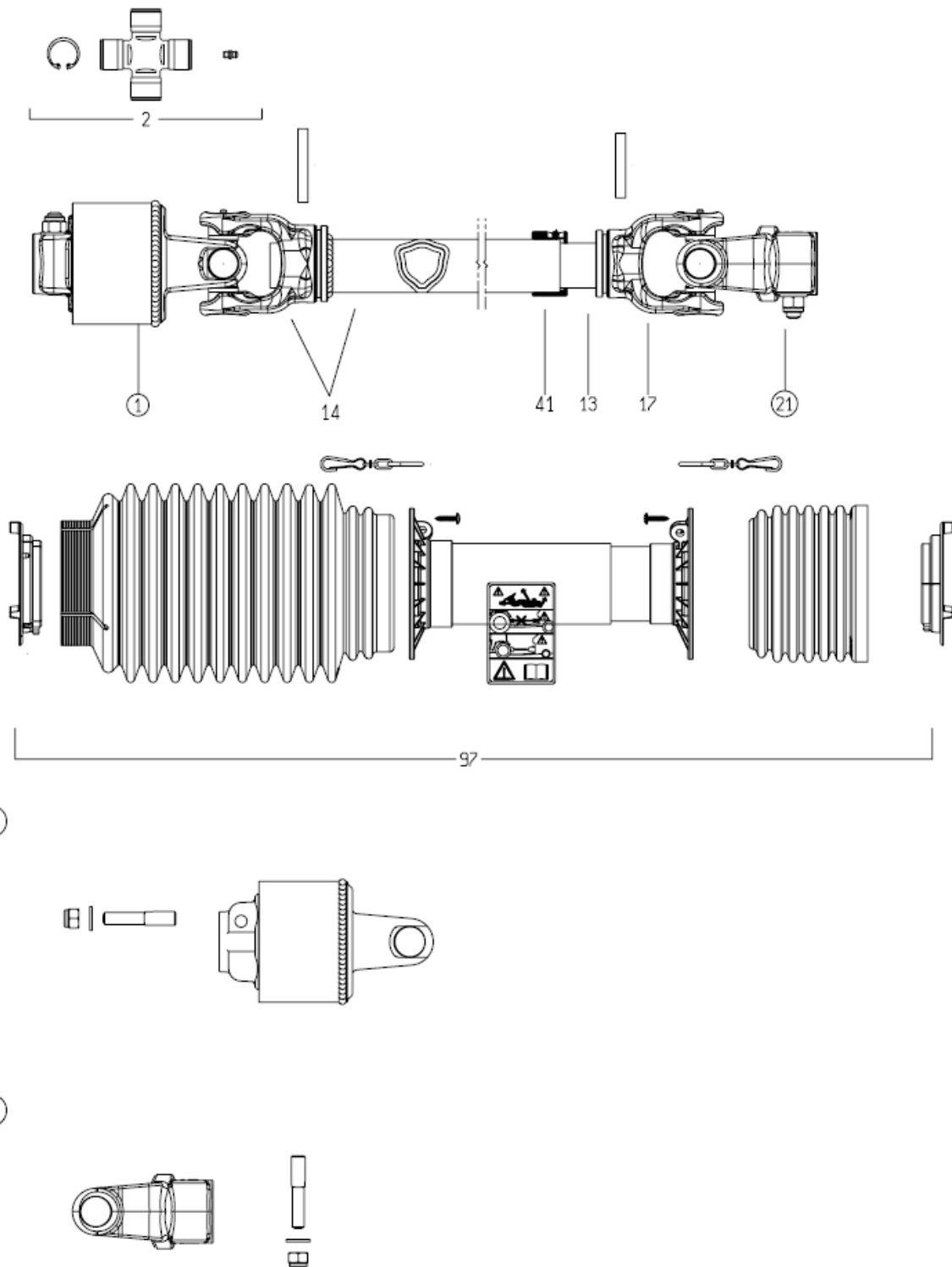
---

## 5770582 – INPUT SHAFT

ITEM NO.	PART NO.	DESCRIPTION.	QTY.
2	n/a	CROSS KIT	2
5	n/a	OUTER TUBE YOKE	1
8	n/a	ROLL PIN	1
12	n/a	OUTER TUBE	1
13	n/a	INNER TUBE	1
16	n/a	ROLL PIN	1
17	n/a	INNER TUBE YOKE	1
21	n/a	SLIP CLUTCH ASSY	1
51	n/a	PUSH PIN ASSY	1
61	n/a	TAPER PIN	1
70	n/a	NUT AND BOLT	8
71	n/a	FLANGE YOKE	1
72	n/a	CLUTCH BUSH	1
73	n/a	FRICTION DISC	2
74	n/a	CLUTCH HUB	1
75	n/a	PRESSURE PLATE	1
76	n/a	SPRING PLATE	1
97	5770582.14	COMPLETE GUARD KIT	1

# Spearhead MULTICUT 430

## 5770583 – WING SHAFT



# Spearhead MULTICUT 430

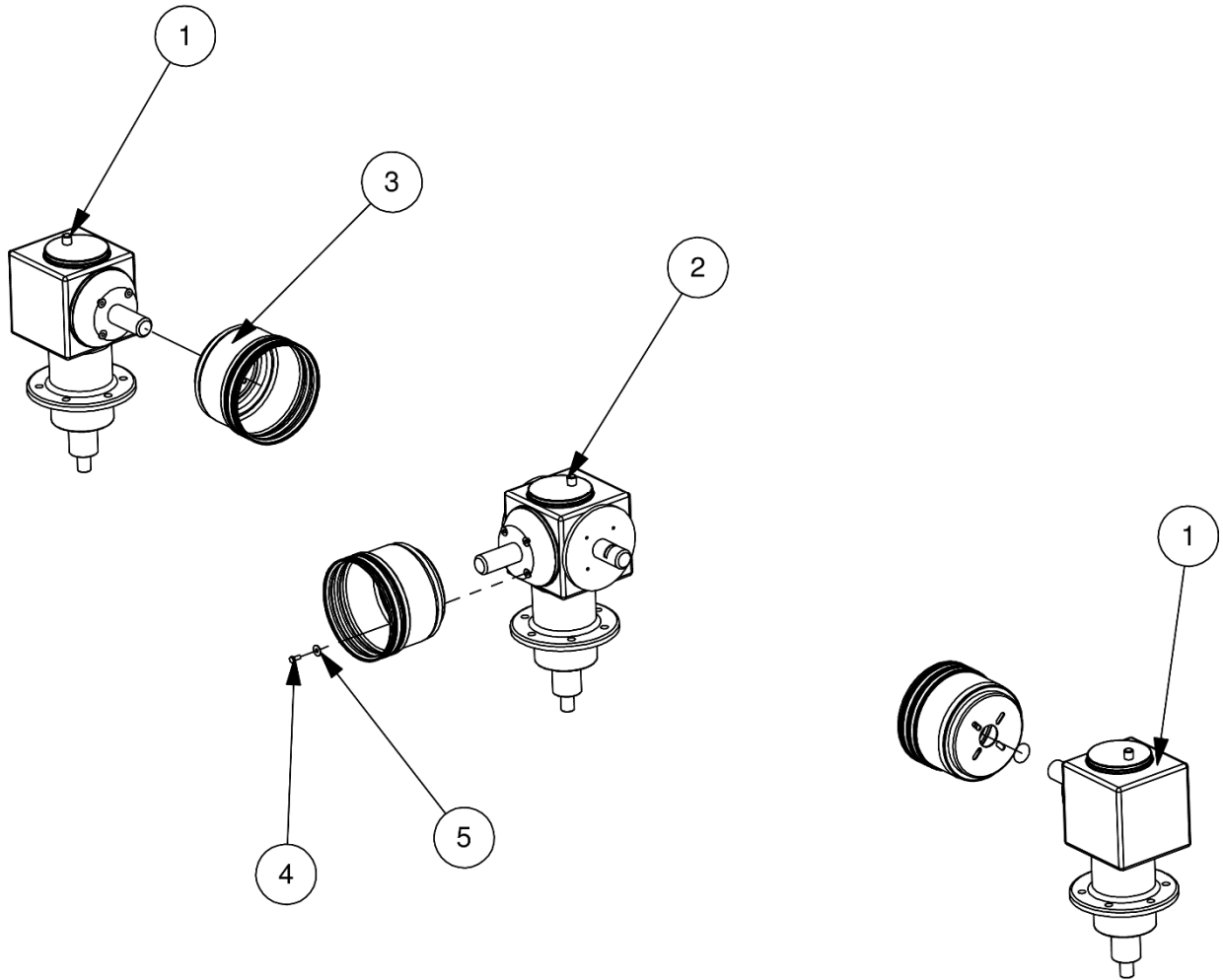
---

## 5770583 – WING SHAFT

ITEM NO.	PART NO.	DESCRIPTION.	QTY.
1	5770576.02	RUBBER JOINT ASSY	1
2	5770576.03	CROSS KIT	2
13	5770576.04	INNER TUBE	1
14	5770583.05	YOKE AND OUTER TUBE	1
16	5770143	ROLL PIN	1
17	5770096	INNER TUBE YOKE	1
21	5770576.06	YOKE	1
51	5770211.16	TAPER PIN	1
61	5770576.07	TAPER PIN	1
97	5770583.01	COMPLETE GUARD KIT	1

# Spearhead MULTICUT 430

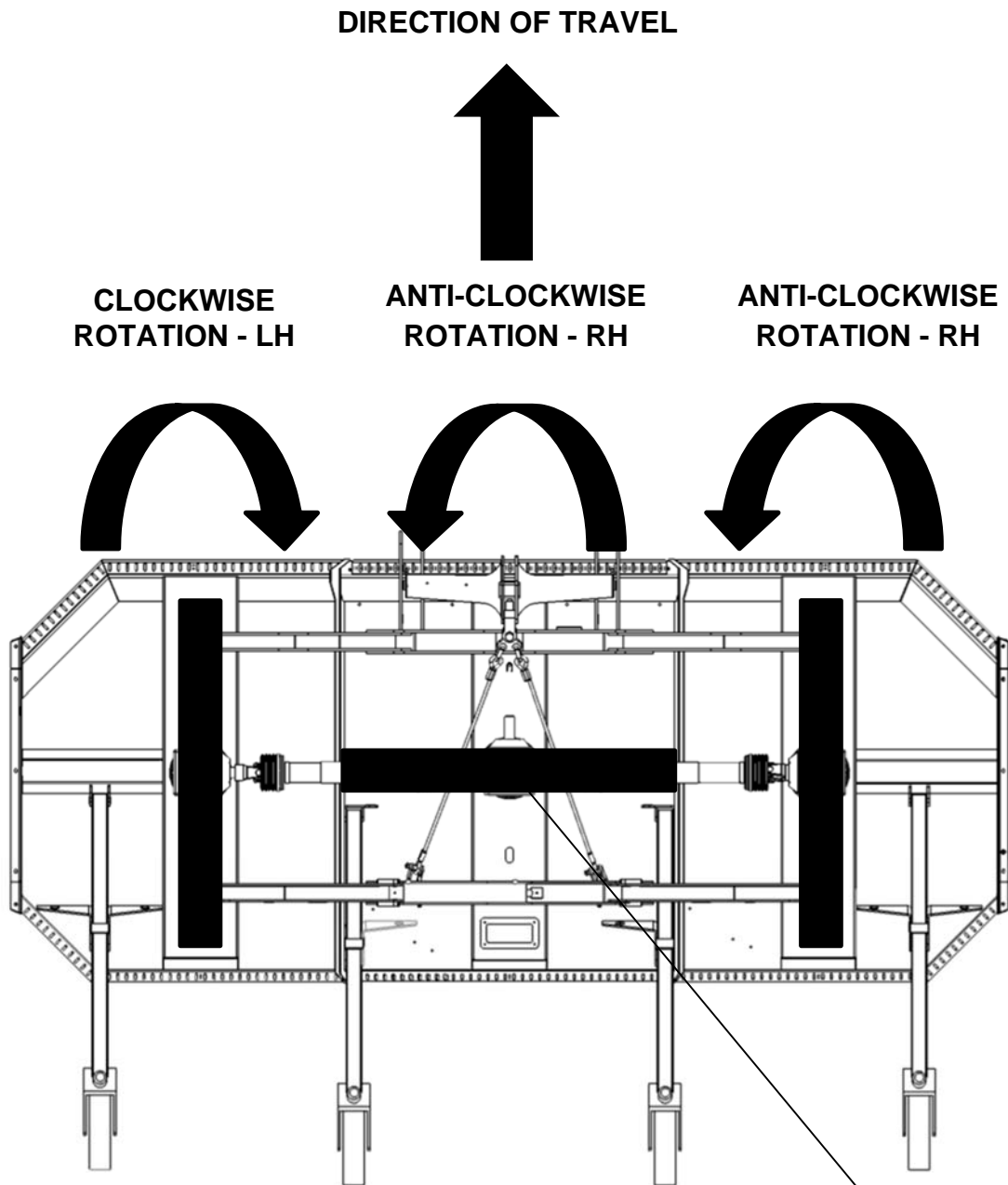
## SI80043.08 – GEARBOXES



ITEM NO.	PART NO.	DESCRIPTION.	QTY.
1	5770539	WING GEARBOX	2
2	46979.01	CENTRE GEARBOX	1
3	5770128	CONE	3
4	2770401	SETSCREW	4
5	2770244	REPAIR WASHER	4

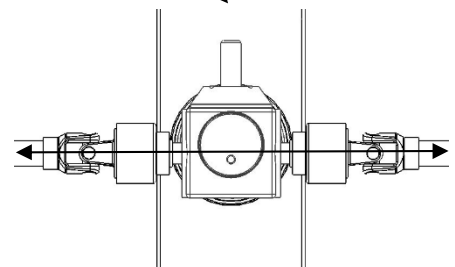
# Spearhead MULTICUT 430

## GEARBOX AND BLADE TIMING AND ROTATION



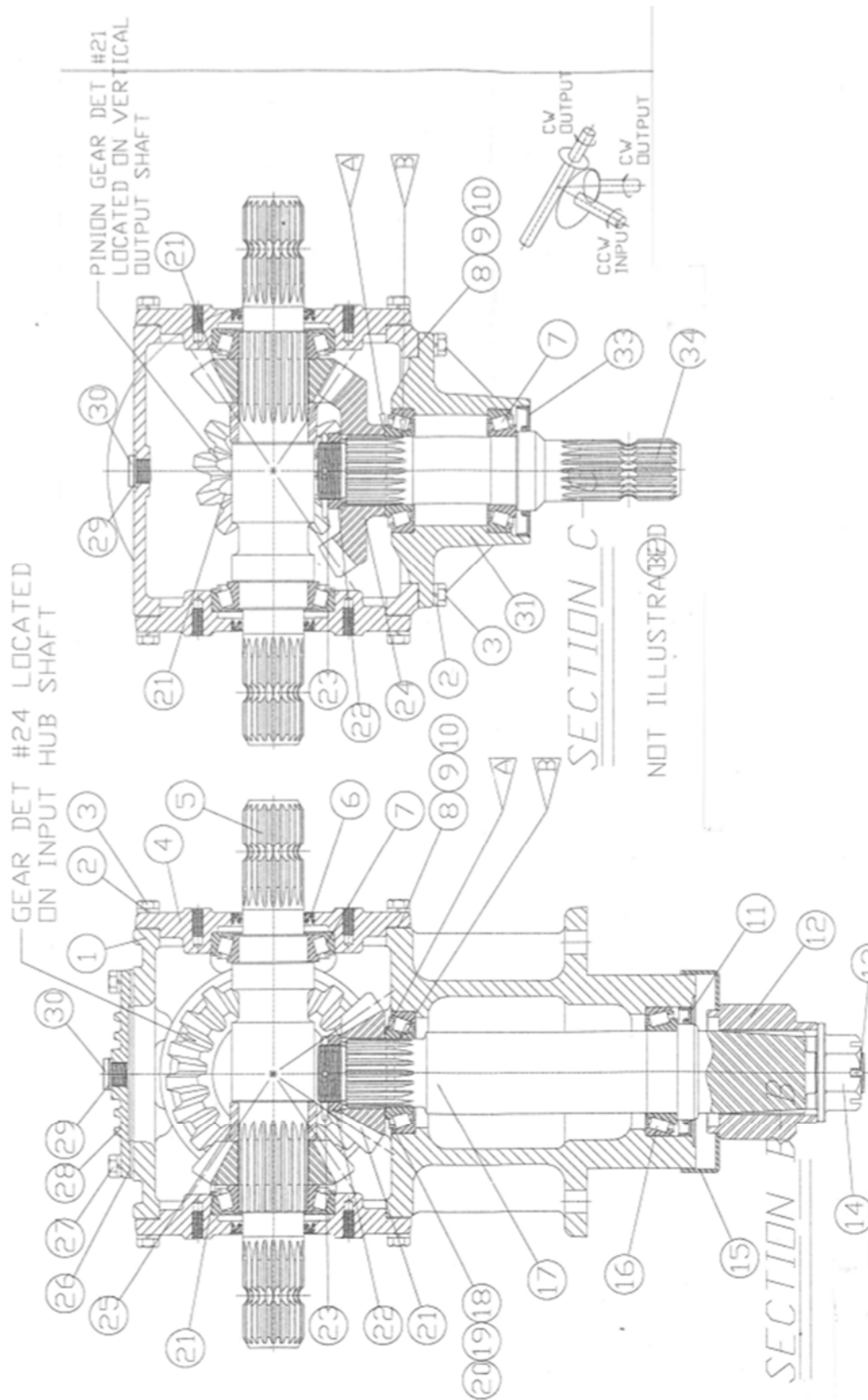
**PLEASE NOTE:**

PTO SHAFT YOKES MUST BE SET SO THAT THEY ALIGN EITHER SIDE OF THE SPLITTERBOX TO ALLOW THE MACHINE TO FOLD FOR TRANSPORT WITHOUT DAMAGING THE WING SHAFTS OR GEARBOXES



# Spearhead MULTICUT 430

## 46979.01 - CENTRE GEARBOX



# Spearhead MULTICUT 430

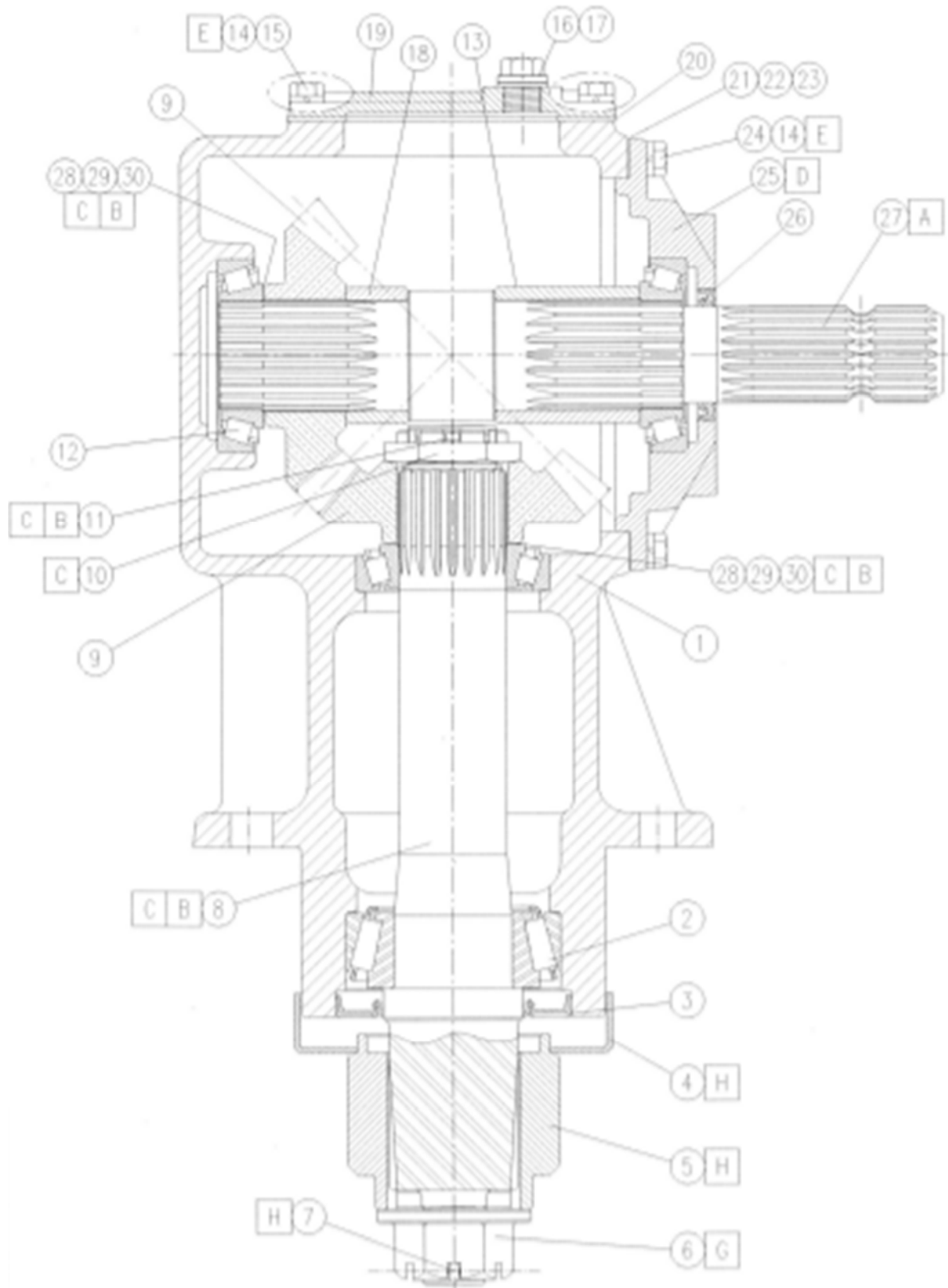
## 46979.01 – CENTRE GEARBOX

ITEM NO.	PART NO.	DESCRIPTION.	QTY.
1	N/A	HOUSING	1
2	N/A	LOCK WASHER	28
3	00758659	CAP SCREW	24
4	43297.32	CAP	2
5	N/A	SHAFT	1
6	N/A	OIL SEAL	2
7	43297.36	BEARING	5
8	43297.37	GASKET (0.10)	VAR
9	43297.38	GASKET (0.25)	VAR
10	43297.39	GASKET (0.50)	VAR
11	N/A	OIL SEAL	1
12	45216.33	BLADE HUB	1
13	N/A	COTTER PIN	1
14	N/A	FLANGED NUT	1
15	45216.35	SEAL PROTECTOR	1
16	N/A	BEARING	1
17	N/A	SHAFT	1
18	00758667	SHIM (0.30)	VAR
19	00758668	SHIM (0.40)	VAR
20	00758671	SHIM (0.50)	VAR
21	N/A	GEAR	2
22	43297.44	NUT	1
23	43297.45	COTTER PIN	2
24	N/A	GEAR	1
25	43297.48	SPACER	1
26	N/A	GASKET	1
27	N/A	CAP SCREW	4
28	00770732	COVER	1
29	43297.46	WASHER	3
30	43297.47	LEVEL PLUG	2
31	43297.42	INPUT HUB	1
32	43297.50	VENT PLUG	1
33	N/A	OIL SEAL	1
34	00762522	SHAFT	1
35	43297.52	SERIAL PLATE	1
36	43297.51	RIVET	2



# Spearhead MULTICUT 430

## 5770539 – WING GEARBOX



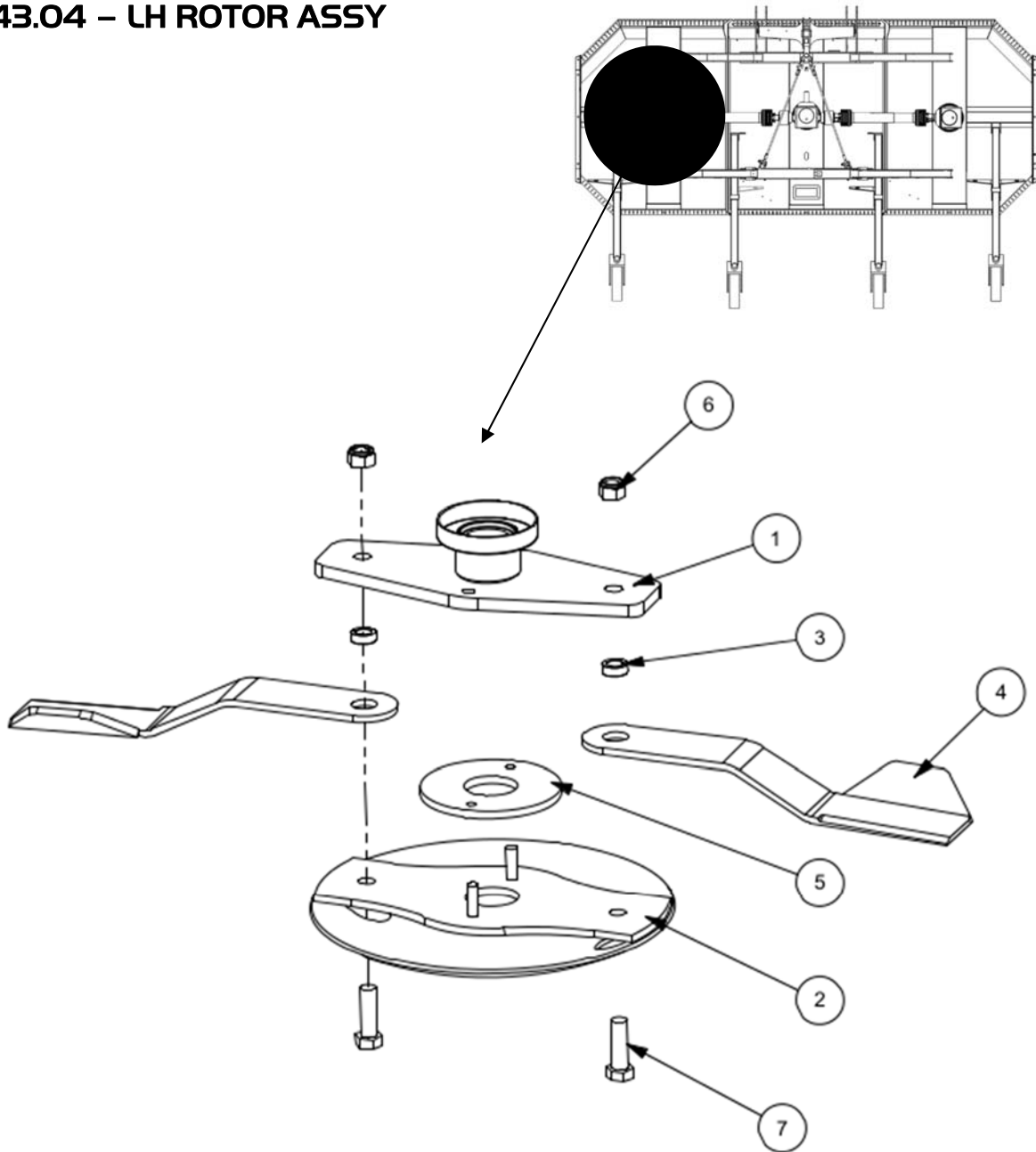
# Spearhead MULTICUT 430

5770539 – WING GEARBOX

ITEM NO.	PART NO.	DESCRIPTION.	QTY.
1	N/A	HOUSING	1
2	N/A	BEARING	1
3	00770726	OIL SEAL	1
4	45216.35	SEAL PROTECTOR	1
5	45216.33	BLADE HUB	1
6	N/A	FLANGED NUT	1
7	N/A	COTTER PIN	1
8	00770728	SHAFT	1
9	N/A	GEAR	2
10	43297.44	NUT	1
11	43297.45	COTTER PIN	1
12	43297.36	BEARING	3
13	N/A	SPACER	1
14	N/A	WASHER	12
15	N/A	CAP SCREW	4
16	00770737	LEVEL PLUG	2
17	43297.46	WASHER	3
18	43297.48	SPACER	1
19	00770732	COVER	1
20	N/A	GASKET	1
21	43297.37	GASKET (0.10)	VAR
22	43297.38	GASKET (0.25)	VAR
23	43297.39	GASKET (0.50)	VAR
24	00758659	CAP SCREW	8
25	00770734	CAP	1
26	N/A	OIL SEAL	1
27	N/A	SHAFT	1
28	00758667	SHIM (0.30)	VAR
29	N/A	SHIM (0.40)	VAR
30	00758668	SHIM (0.50)	VAR
31	43297.50	VENT PLUG	1
32	43297.51	RIVET	2
33	43297.52	SERIAL PLATE	1

# Spearhead MULTICUT 430

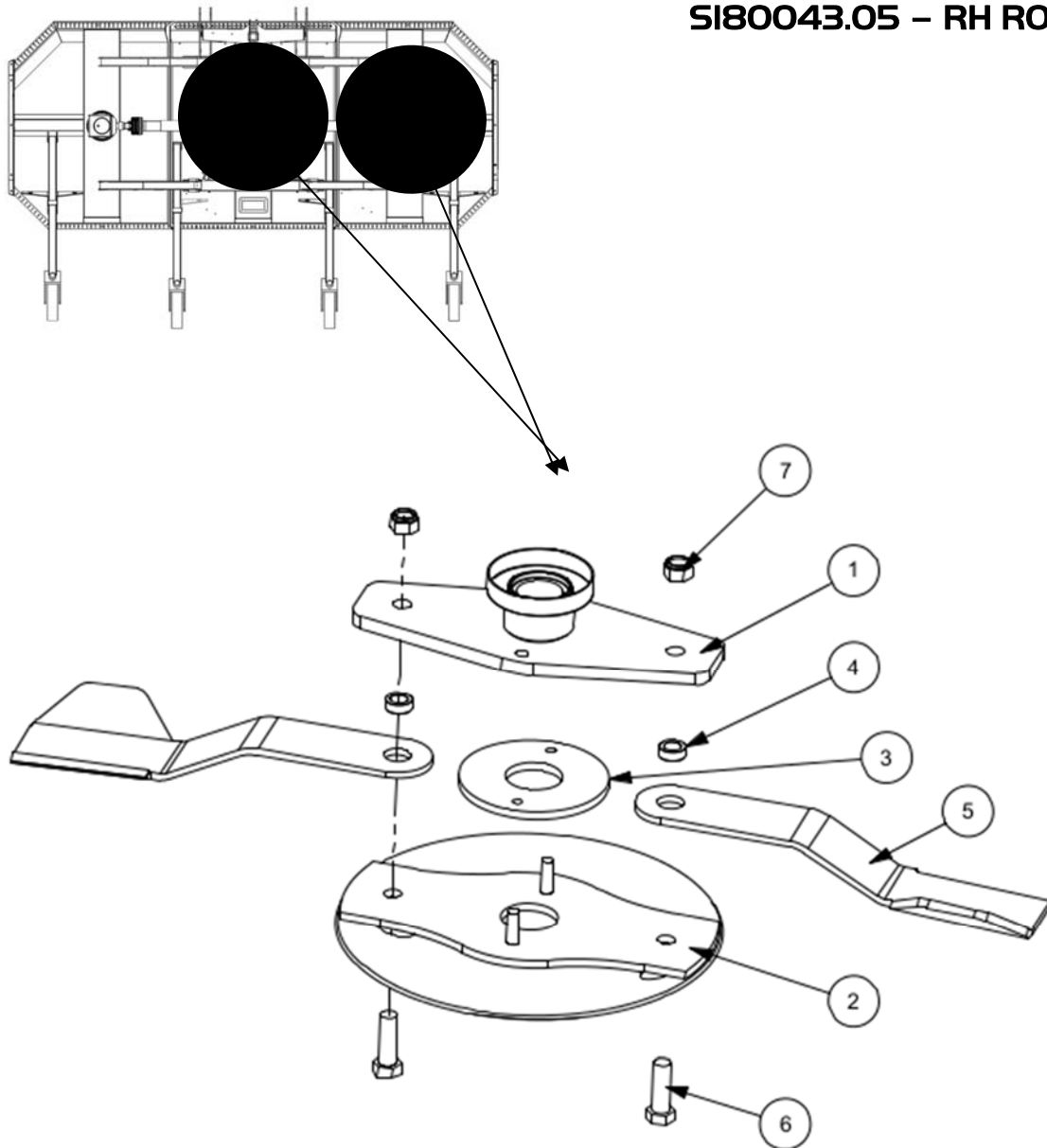
## SI80043.04 – LH ROTOR ASSY



ITEM NO.	PART NO.	DESCRIPTION.	QTY.
1	181316	UPPER BLADE CARRIER	1
2	180576	ANTI-SCALP DISH	1
3	7770707	BLADE BUSH	2
4	7770703	LH BLADE	2
5	180578	SPACER PLATE	1
6	2770414	NYLOCK NUT	2
7	2770413	BLADE BOLT	2

# Spearhead MULTICUT 430

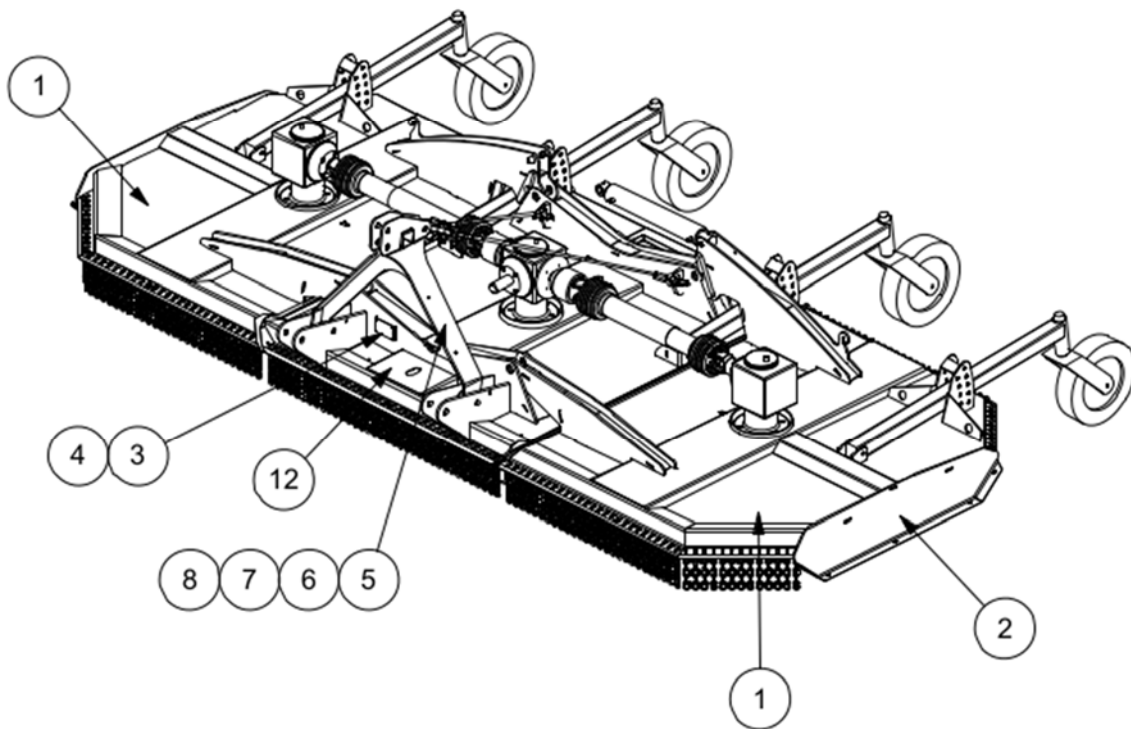
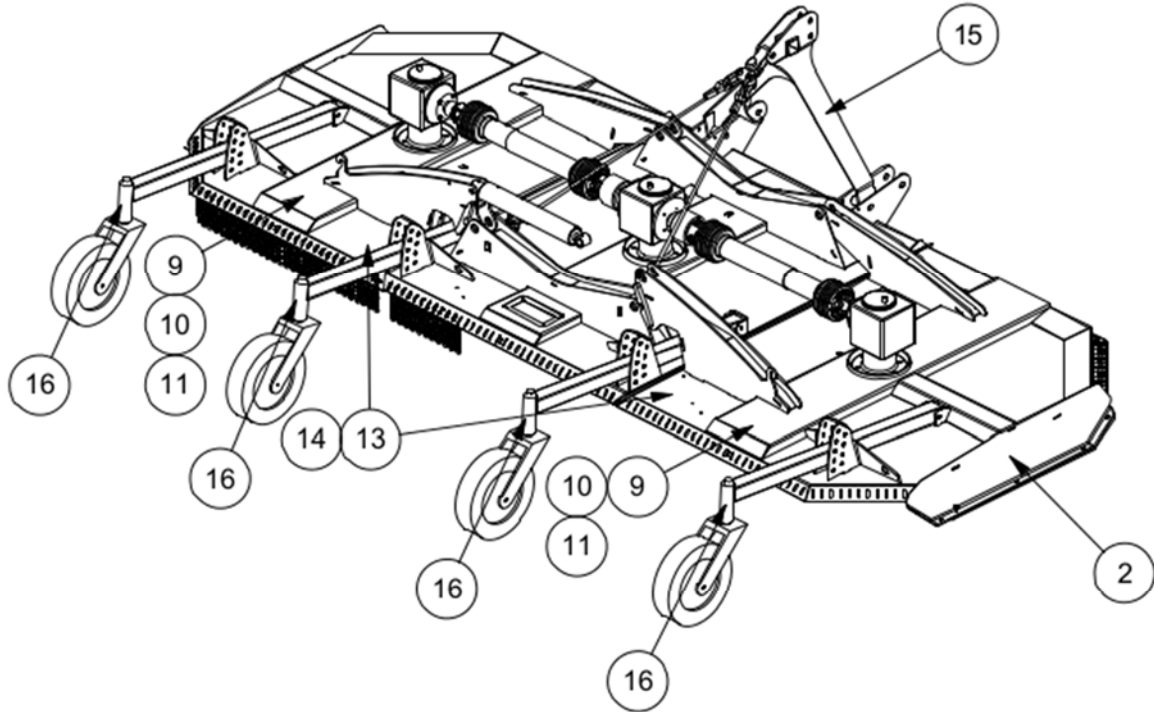
## SI80043.05 - RH ROTOR ASSY



ITEM NO.	PART NO.	DESCRIPTION.	QTY.
1	181316	UPPER BLADE CARRIER	1
2	180576	ANTI-SCALP DISH	1
3	180578	SPACER PLATE	1
4	7770707	BLADE BUSH	2
5	7770702	RH BLADE	2
6	2770413	BLADE BOLT	2
7	2770414	NYLOCK NUT	2

# Spearhead MULTICUT 430

## SI80043.IO – DECALS MC430



# Spearhead MULTICUT 430

---

S180043.IO – DECALS MC430

ITEM NO.	PART NO.	DESCRIPTION.	QTY.
1	8770523	DECAL – MC430	2
2	8770371	SPEARHEAD DECAL	2
3	8770330	SERIAL NO. PLATE	1
4	7103230	POP RIVET	4
5	8770363	READ OPS BOOK DECAL	1
6	8770367	LANGUAGES DECAL	1
7	8770362	ESCAPING FLUIDS DECAL	1
8	8770358	REMOVE KEY DECAL	1
9	8770357	KEEP DISTANCE DECAL	2
10	8770361	STAY CLEAR OF BLADES	2
11	8770306	KEEP BOLTS TIGHT DECAL	2
12	8770323	RECOMMENDED PTO - 1000	1
13	8770355	SECURE CYLINDER DECAL	2
14	8770368	FALLING WING DECAL	2
15	8770451	NO RIDING DECAL	1
16	8770322	GREASE POINT DECAL	4

# Spearhead MULTICUT 430

---

## OPT0866 – BAFFLE KIT - FRONT

ITEM NO.	PART NO.	DESCRIPTION.	QTY.
1	181767	BAFFLE 1	3
2	181768	BAFFLE 2	3
3	2770407	BOLT	6
4	2770437	WASHER	6
5	2770412	NYLOCK NUT	3
6	2770469	SPRING WASHER	3

## OPT0839 – BAFFLE KIT – REAR

ITEM NO.	PART NO.	DESCRIPTION.	QTY.
1	S180043.24	SCHEDULE	1
1	181590	BAFFLE 1	2
2	181591	BAFFLE 2	1
3	2770368	SKT BUTTON SCREW	22
4	2770416	NYLOCK NUT	22





Spearhead Machinery Ltd  
Green View  
Salford Priors  
Evesham  
Worcestershire  
WR11 8SW  
Tel: 01789 491860  
Fax: 01789 778683  
[www.spearheadmachinery.com](http://www.spearheadmachinery.com)  
[enquiries@spearheadmachinery.com](mailto:enquiries@spearheadmachinery.com)