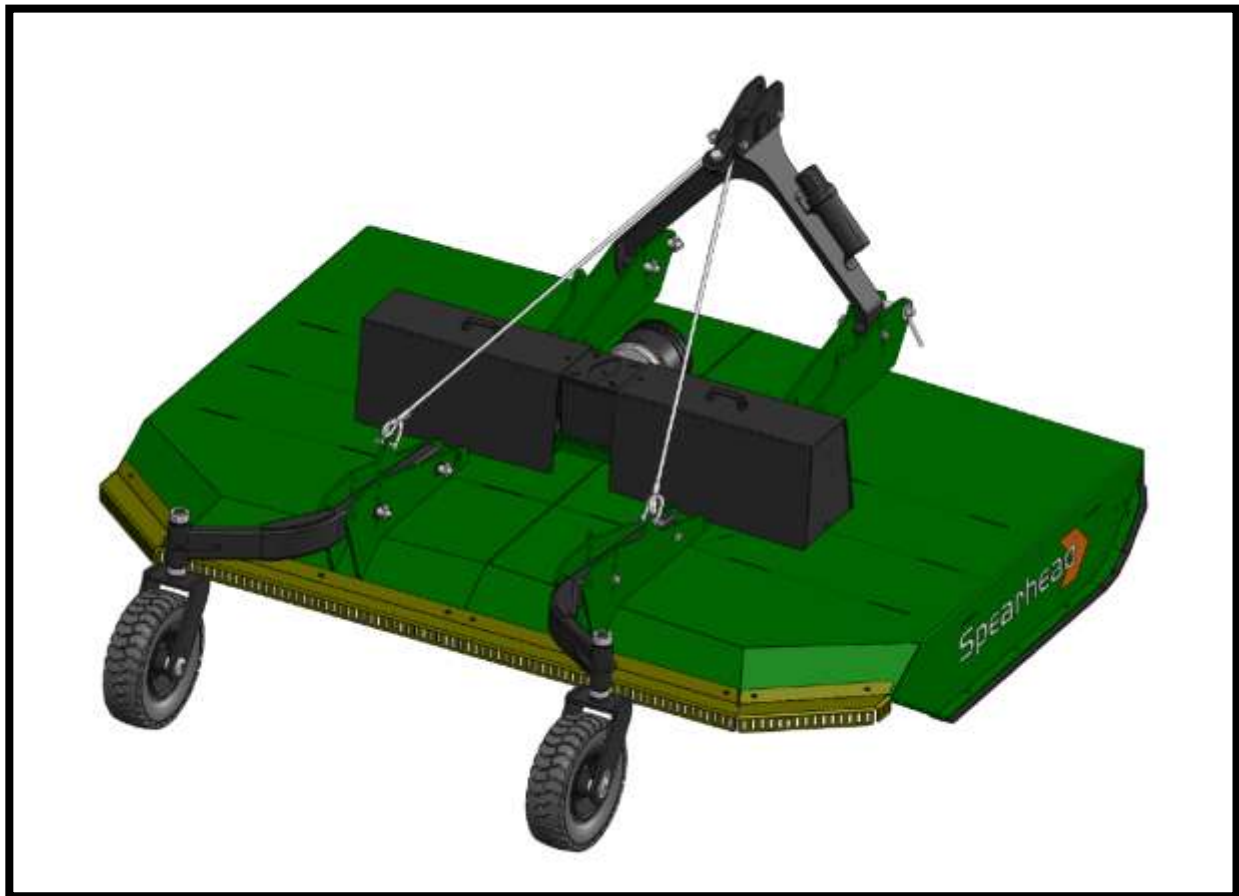


Spearhead

STARCUT 300



Edition 1.1 – March 2012
Part No. 8999062

HANDBOOK & PARTS MANUAL

Spearhead

STARCUT 300

Handbook & Parts Book

Edition 1.1 – March 2012
Part No. 8999062

Please ensure that this manual is handed to the operator before using the machine for the first time. The operator must fully understand the contents of this manual before using this machine.
(If the machine is resold the Manual must be given to the new owner.)

Important Note

The information contained in this manual is correct at the time of publication. However, in the course of constant development, changes in specification are inevitable. Should you find the information given in this book different to the Machine it relates to please contact the “After Sales Department” for advice

Spearhead Machinery
Green View,
Salford Priors,
Evesham,
Worcestershire,
WR11 8SW
Tel: 01789 491860
Fax: 01789 778683
www.spearheadmachinery.com
enquiries@spearheadmachinery.com

Contents

EC Declaration.....	4
Important Safety.....	5
Safety Stickers.....	6
Introduction.....	7
Specification.....	8
Attaching To The Tractor.....	9
Setting Up & Adjustments – Height.....	10
Machine Protection.....	11
Operation.....	12
Transportation.....	12

Servicing & Maintenance

Safety First.....	13
Torque Settings.....	13
Daily Every 8 Hours.....	14
Every 16 Hours.....	14
Regularly.....	14
Blades.....	15
Skids.....	16
Storage.....	16
After Storage.....	16
Trouble Shooting Guide.....	17
Warranty.....	18

Parts List

Ordering Your Parts.....	21
Main Deck.....	22
Headstock.....	23
Wheel Arm.....	24
Driveline.....	26
Splitter box.....	27
Cross Shaft.....	28
Rotor box.....	29
Input Shaft - Rear Mount.....	31
Input Shaft - Front Mount.....	32
MP6 Blade Carriers.....	33
HD2 Blade Carriers.....	35
Baffle Kit.....	37
Front Rubber Flap Kit.....	38
Starcut 300 Decal Kit.....	39

STARCUT 300

CE Declaration of Conformity, Conforming to EU Machinery Directive 2006/42/EC

We, Spearhead Machinery Ltd, Green View, Salford Priors,
Evesham, Worcestershire, WR11 8SW hereby declare that:

Product

Product Code.....

Serial No.....

Type.....

Manufactured by: Alamo Manufacturing Services (UK) Limited, Station
Road, Salford Priors, Evesham, Worcestershire, WR11 8SW

Complies with the required provisions of the Machinery Directive
2006/42/EC. The Machinery Directive is supported by the following
harmonized standards:

- BS EN ISO 14121-1 (2007) Safety of Machinery – Risk Assessment,
Part 1: Principles Part 2: Practical Guide and Examples of Methods.
- BS EN ISO 12100-1 (2010) Safety of Machinery – Part 1: Basic
Terminology and Methodology Part 2: Technical Principles.
- BS EN 349 (1993) + A1 (2008) Safety of Machinery – Minimum
Distances to avoid the Entrapment of Human Body Parts.
- BS EN 953 (1998) Safety of Machinery – Guards General
Requirements for the Design and Construction of Fixed and Movable
Guards.
- BS EN 982 (1996) + A1 (2008) Safety Requirements for Fluid Power
Systems and their Components. Hydraulics.

The EC Declaration only applies if the machine stated above is used in
accordance with the operating instructions.

Signed



(On behalf of Spearhead Machinery Ltd)

Status

General Manager

Date

.....

Important



Safety

- Never operate the machine with other people present, as it is possible for debris, including stones, to be discharged from the front and rear of the flail hood.
- Always ensure all cab safety guards are in place and all tractor windows closed.
- Never allow an inexperienced person to operate the machine without supervision.
- Never allow children to play on or around the machine at any time.
- Never attempt any maintenance or adjustment without first disengaging the PTO, lowering to the ground, stopping the tractor engine and applying the tractor parking brake.
- Before leaving the tractor cab always ensure that the machine is firmly on the ground, and the rotors have stopped spinning
- Never stop the engine with the PTO engaged.
- Always check that all guards are properly fitted, check there is no damaged or loose parts. Particular attention should be given to the blades to ensure they are not damaged, cracked or missing.
- Never operate with blades missing.
- Always operate PTO at recommended speed 1000 RPM as indicated on the sticker.
- Always inspect work area for wire, steel posts, large stones and other dangerous materials and remove before starting work.
- Never operate with wire around rotors. Stop immediately.
- Never attempt to use the machine for any purpose other than that it was designed for.
- Ensure that all warning labels are always visible and that they are not damaged, defaced or missing.
- Never transport with the PTO engaged.
- When parking up always lower to the ground

Safety



Warning
Stay clear of mower blade as long as engine is running.



Warning
Danger – flying objects keep safe distance from the machine as long as the engine is running.



Warning
Shut off engine and remove key before performing maintenance or repair work.



Warning
Check all nuts are tight every 8 hours.



Warning
Carefully read operator's manual before handling this machine. Observe instructions and safety rules when operating.

STARCUT 300

Introduction

The Spearhead Starcut 300 is a very robust high capacity Rotary Cutter that is easy to operate and maintain, but to ensure trouble-free operation this manual should be carefully studied.

Safety First

Do not start the machine until you fully understand operation and safety precaution requirements. Always ensure the operators are proficient with the operation of this type of this machine.

Tractor Requirements

- Spearhead strongly recommends 75hp-plus tractor with **CATEGORY 2** rear linkage.
- Ensure there is sufficient weight on front wheels of the tractor for safe transport and stability.
- PTO must be independent live drive to enable continuous PTO drive even when tractor clutch is pressed down.
- Before hitching, ensure position control is selected. Do not attempt to hitch in draft control.
- Check chains and stabilizers must be in good working order to hold the machine firmly. Do not operate without checking that chains and stabilizers are tight.
- Spearhead particularly recommend 'turn buckle' type check chains
- Set linkage lift rods to an equal length.

STARCUT 300

Specification

Cutting width	2.9m
Overall width	3.0m
Transport width	3.0m
Weight	900kg
Number of Rotors	2
Blades	4 or 12
Blade overlap	80mm
Blade tip speed	85m/sec
Splitter gearbox rating	175hp
Rotor gearbox rating	116hp
PTO speed	1000rpm
Rubber clutch protection	2
Input clutch	1
Tractor minimum power requirement	75hp

Attaching To The Tractor

Fit the machine to the tractor linkage in the standard way, ensuring the correct match of linkage (**CAT 2 pins**). Check that the top link is in good order and threads are well lubricated. Use stabilisers to take any free movement out of lower link arms.

Before fitting the machine to the tractor linkage you should ensure there is sufficient front weight to ensure the front wheels are always in contact with the ground. This is most important for safe transport and stability when turning on slopes.

Before fitting the PTO for the first time, it may be necessary to adjust the length. There should be maximum engagement of the sliding tubes without bottoming at the shortest operation position. To check, first connect the mower to the tractor. Pull the PTO shaft apart and connect to the tractor PTO output shaft and the gearbox input shaft. Hold the half shafts next to each other in the shortest working position.

If necessary, shorten the inner and outer guard tubes equally (Fig. 2). Shorten the inner and outer sliding profiles by the same length as the guard tubes. File all sharp edges and remove burrs. Grease sliding profiles.

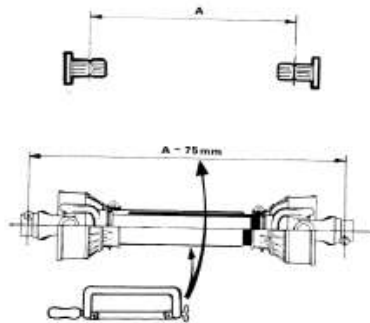


Fig 2

To fit the PTO to the machine, first remove bolt or tapered pin from the slip clutch yoke and push onto splined shaft of gearbox ensuring it is fully engaged before refitting retaining bolt/pin.

To fit the PTO, first clean and grease press pins on the yoke and simultaneously push the PTO drive shaft onto PTO shaft of the tractor until pins engage.

The PTO shaft is fitted with a non-rotating safety guard. It should be secured to the machine and tractor with the two retaining chains provided.

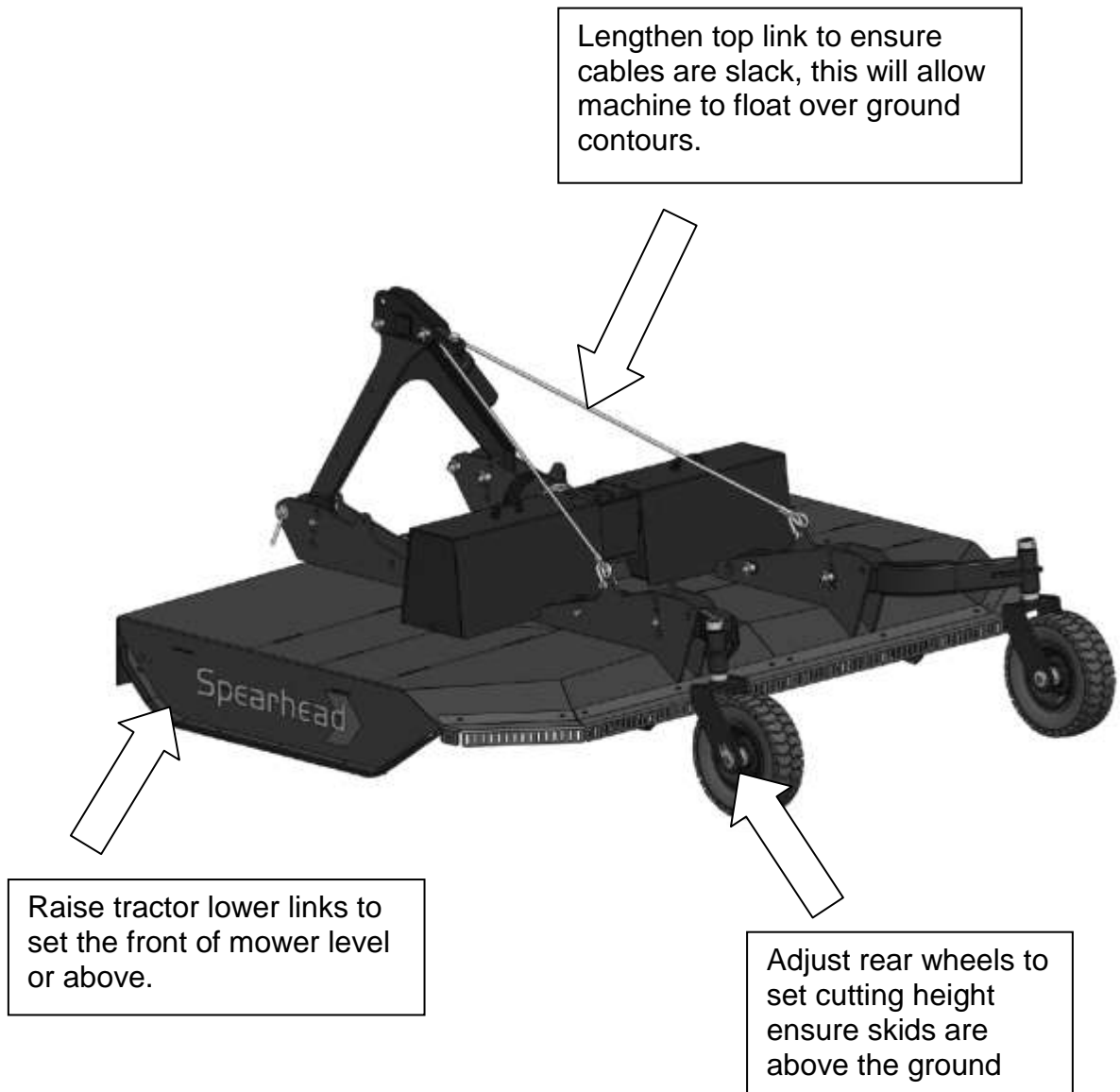
STARCUT 300

Setting Up & Adjustment

Height

Cutting height adjustment is achieved by raising or lowering the wheels. Lowering the wheels produces a longer cut, raising the wheels leaves a shorter cut. Always set machine level front to rear and side to side.

The weight of the machine should be equally distributed between the tractor and the wheels. When set properly this should prevent scalping.



Machine Protection

To prevent gearbox damage the input PTO is fitted with an automatic knocking clutch. When cutting in extreme conditions where solid objects are likely to be found it is recommended the operator reduces the engine revs to allow the blades to pivot more easily when striking solid objects, and proceed with caution.

The wing rotor gearboxes are fitted with friction type torque limiters, the clutch settings should not be altered without reference to the Spearhead Service Department. Never operate without protection, this could result in severe damage to the gearbox and drive lines, as well as infringing the warranty.

The centre rotor gearbox is fitted with an elastic coupling to cushion any shock loads from the rotor and is non adjustable.

Safety Break Away

Blade carrier angle ensures blades move up and away from obstacles and also minimises stone throw even when cutting at ground level.



Operation

Engage the PTO only when the tractor engine is at low revs to prevent shock damage to the machine, slowly increase the engine revs to achieve the standard 1000 PTO speed. (As indicated on the sticker).

If at any time serious vibration occurs, stop the engine immediately and check that no blades are missing - following all safety precautions. The cause must be found and rectified immediately or other components may be affected.

When in work, lower the machine to the ground carrying its weight on the wheels, allowing the machine to follow the contours of the ground and ensuring there is sufficient slack in the wire rope. Select a sensible forward speed bearing in mind the density of growth, the terrain, and the available horsepower, taking extra care when turning, particularly on slopes. When turning, it is not necessary to lift the machine off the ground but instead allow sufficient room to turn in a large radius. The machine only needs to be raised when turning in a tight corner or reversing over dense undergrowth or when operating on the front linkage. The machine is fitted with, as standard, 4 high lift blades complete with fin, to aid spreading/mulching.

Quality of finish is determined by the forward speed i.e. a slow speed will produce a high quality of cut, whereas faster forward speeds are used when high output is first priority.

When operating, particularly in confined areas, it is possible to cut going backwards but it is advisable to slightly raise the machine, particularly if in dense growth where there is a risk of hitting hidden solid obstacles obscured by dense undergrowth.

Always exercise particular care when operating over uneven ground surfaces. Do not allow the blades and blade holders to frequently hit the ground.

Transportation

Please observe Public Highway Regulations concerning the towing of implements, and securely attach a registration and lighting board. Take care to slow when travelling over rough ground and avoid bouncing machine on linkage causing unnecessary strain.

Maximum speed with a mounted implement is 20mph (30 km/h)

Service & Maintenance

Safety First

- Never leave the tractor seat without first disengaging the PTO and stopping the engine.
- Ensure all rotating parts have stopped turning.
- Never attempt any repairs, maintenance, service or any other checks with the machine carried on the tractor hydraulics.
- Always fully lower to the ground, or securely prop the machine on substantial servicing stands.
- Always replace all guards and retaining chains after servicing/maintenance is completed.



Important

On delivery of your machine check that the dealer has completed the P.D.I. form ensure the warranty registration form is completed and returned.

It is imperative that the following checks are carried out in order not to invalidate your warranty; these are carried out **before the first operation, after the first hour, then after 4 hours**. These checks are:

- Wheel nuts and tyre pressure (50psi)
- Gearbox bolts are fully tightened
- Blade bolts are fully tightened and in particular the castle headed nut on the blade rotor
- Retaining bolts on the drive shaft
- Grease all points
- The gearbox oil level, top up with EP90 Gear oil if required
- It is your responsibility to maintain, to ensure a long reliable working life

Torque Settings

The Torque figures given below are recommended maximum settings only.

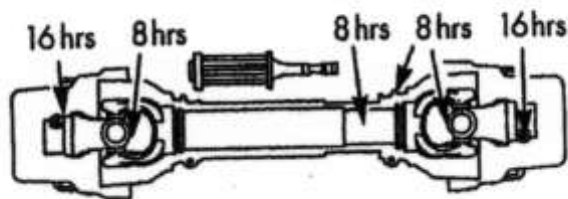
Size:	Tensile strength:	Description:	Torque setting: Nm
M16	8.8	Gearbox bolts	280
M16	8.8	Blade carriers	280
M20	8.8	Blade bolts	425
M24	8.8	Blade bolts	950

STARCUT 300

Daily / Every 8 hours

- Grease all grease points, on PTO, including secondary drive line under the center guard
- Check condition of blades and blade bushes and ensure all retaining bolts are fully tight.
- Check gearbox oil, replenish with 'EP90' gear oil as necessary to the correct level line on the dipstick provided with each gearbox.
- Dismantle and clean PTO sliding surfaces and re-grease. Grease universal joints (Fig. 3).

Fig. 3



Every 16 hours

- Grease PTO inner tube and push pins (Fig. 3)

Regularly

- Check there is no wrapping of string, plastic, grass or other debris between rotor boss and blades.
- Inspect gearbox seals for leaks.
- Regularly check the rotor boss retaining castle nut for tightness. First remove the split pin, select the correct size socket in 3/4" drive and fully tighten the nut. When replacing the split pin, do not slacken the nut to align the hole, always tighten. Failure to regularly check this nut will result in serious wear to hub, which is expensive to repair.
- It is most important that all gearbox and blade bolts are regularly checked to be very tight. **When the machine is new there will be a 'bedding in' period where very frequent checking is important.**

STARCUT 300

Blades

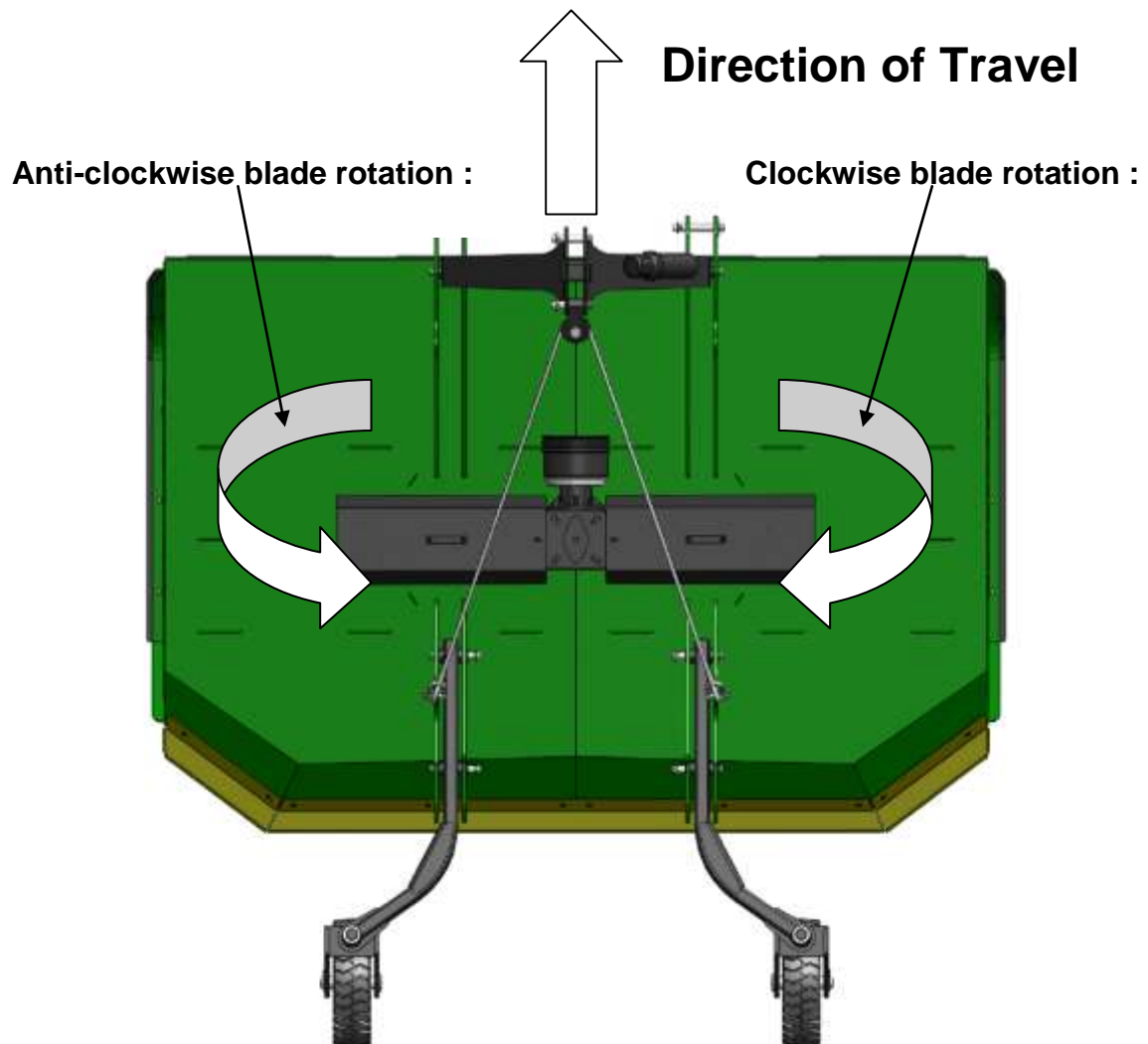
Caution! When carrying out maintenance work on or near the blades be careful of free-swinging blades over-centring and falling. It is recommended that protective headgear, gloves and goggles are worn.

The blades can be re-sharpened by grinding the cutting edges and care must be taken that the blades are of the same weight and length after grinding. Do not over heat when grinding, as this will affect the hardness of the blades.

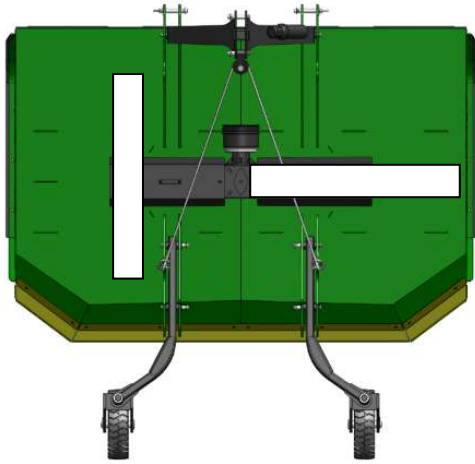
All the blades are free swinging and swivel on hardened steel bushes, which are easily replaced. When replacing blades, it is important that blades are replaced in sets, in order to retain balance of the rotor. Bushes must be replaced when new blades are to be fitted.

If the blades are showing any signs of severe wear, damage or cracking, they must be replaced immediately. Never attempt to weld the blades; this will make them very brittle thus extremely dangerous.

Do not take risks with the cutting blades - if in doubt, replace.



STARCUT 300



Blade Alignment:

Ensure the blade alignment is maintained if the drive train is dismantled, refit with the blade carriers at 90 degrees from each other to prevent blade collision.

Skids

When operating on abrasive soils, particularly in stubbles and similar conditions with thin ground cover, excessive skid wear may be expected. To provide extra protection and to prolong life of the skids, special hard facing rods are available.

If working in wet and muddy conditions, ensure that debris is not allowed to build up on the deck.

Storage

Before storing away, thoroughly wash the machine removing all traces of grass and dirt. Great care must be taken when washing with high-pressure hoses, do not hold the water jet close to the paintwork. Use steam cleaners with caution, be sure to remove all detergents to avoid any discolouring or damage to paint.

Grease all grease points until fresh grease shows. Store PTO shaft in a dry place.

After Storage

Check condition of the tyre (where applicable) and then follow the maintenance procedure covered in the servicing part of this manual. Pay particular attention to the condition of guards and blades.

Remember the Multicut/Starcut 300 is designed to withstand the most rigorous conditions and, with a little care and attention, will give many years of trouble free service.

So as not to invalidate the warranty and to avoid problems, use only genuine parts and make sure the machine is not driven at a speed in excess of 1000 rpm on the PTO. As indicated on the speed sticker.

Trouble Shooting Guide

Broken or Damaged Blades

- Raise cutting height
- Avoid obstacles
- Ensure a steady feed into drive (do not snatch the PTO)

Damage Blade Holders

- Raise cutting height
- Avoid obstacles
- Failure to keep retaining nuts and bolts tight

Gearbox Overheating

- Incorrect oil level
- Incorrect grade of oil
- Incorrect operating speed
- Machine overloaded
- Rubbish around the gearbox reducing air circulation

Slip Clutch Failure

- Machine overloaded
- PTO engaged with too much power/revs
- Blades hitting the ground

Damage to Rubber Coupling

- Shock loading from either poor start-up or blades hitting something

Damage to PTO Shaft & Gearboxes

- Inoperative torque limiter
- Seized slip clutch
- Telescopic tube bottoming out
- Engaging drive with too much power/revs
- Lifting machine too high
- Not enough overlap
- Lack of grease on sliding tubes of drive shaft
- Shock loading as a result of impact damage due to the blade carrier striking an obstacle.

Metal Fatigue on Frame

- Too fast a travelling or operating speed for the conditions
- Machine not floating, i.e. not following the ground controls (check position of top link).

Warranty

Spearhead warrants that the Spearhead machine referred to in the Warranty Registration Form will be free from defects in materials and workmanship for a period of 12 months from the date of sale. This warranty does not affect your statutory rights, but merely adds to them. Should you have a problem within 12 months from the date of sale please contact your original Spearhead dealer, or Spearhead's Service Department. Any part found to be defective during this period would be replaced or repaired, at Spearhead's discretion, by the dealer or a Spearhead Service Engineer.

Warranty Conditions

1. The Warranty Registration Form must be completed and returned to Spearhead within 30 days of the date of sale.
2. This warranty does not cover defects arising from fair wear and tear, willful damage, negligence, misuse, abnormal working conditions, use in competition, failure to follow Spearhead's instructions (oral or written, including all instructions and recommendation made in the Operator's Manual) or alteration or repair of the machinery without Spearhead's approval.
3. The machinery must have been serviced in accordance with the Operator's Manual.
4. This warranty does not cover claims in respect of wearing parts such as blades, flails, paintwork, tyres, belts, hydraulic hoses, bearings, bushes, linkage pins, top links, ball ends unless there is a manufacturing or material defect or the cost of normal servicing items such as oils and lubricants.
5. This warranty does not cover any expenses or losses incurred whilst the machinery is out of use for warranty repairs or parts replacement.
6. This warranty does not extend to parts, materials or equipment not manufactured by Spearhead, for which the Buyer shall only be entitled to the benefit of any such warranty or guarantee given by the manufacturer to Spearhead. Only genuine Spearhead replacement parts will be allowable for warranty claims.
7. All parts replaced by Spearhead under warranty become the property of Spearhead and must be returned to Spearhead if Spearhead so request. Such parts may only be disposed of after a warranty claim has been accepted and processed by Spearhead.
8. Spearhead is not liable under this warranty for any repairs carried out without Spearhead's written consent or without Spearhead being afforded a reasonable opportunity to inspect the machinery the subject of the warranty claim. Spearhead's written consent must, therefore, be obtained before any repairs are carried out or parts replaced. Use of non-Spearhead parts automatically invalidates the Spearhead Warranty. Failed components must not be dismantled except as specifically authorised by Spearhead and dismantling of any components without authorisation from Spearhead will invalidate this warranty.
9. All warranty claims must be submitted to Spearhead on Spearhead Warranty Claim Forms within 30 days of completion of warranty work.

Using the machine implies the knowledge and acceptance of these instructions and the limitations contained in this Manual

Extended Warranty

As an extension to the 12-month warranty set out above, Spearhead will provide an additional 12 month warranty cover subject to the Spearhead Warranty Conditions above and the Extended Warranty Conditions below.

Extended Warranty Conditions

1. The extended warranty applies to gearboxes only. It does not apply to other parts, to consumables such as lubricants, seals or labour charges.
2. The machinery must have had an annual service carried out by an Authorised Spearhead Dealer or a Spearhead Service Engineer within 1 month of the first anniversary of the date of sale.
3. The extended warranty does not cover costs of transportation of the machinery to or from the dealer or Spearhead or the call out costs or traveling expenses of on-site visits.

Transfer of Warranty

The Spearhead warranty may be transferred to a subsequent owner of the machinery (for use within the UK) for the balance of the warranty period subject to all of the warranty conditions and provided that the Change of Owner form is completed and sent to Spearhead within 14 days of change of ownership.

Spearhead reserves the right to make alterations and improvements to any machinery without notification and without obligation to do so.

Spearhead

MULTICUT/STARCUT 300

Handbook & Parts Book

Edition 1.1 – March 2012

Part No. 8999062

Spearhead Machinery
Green View,
Salford Priors,
Evesham,
Worcestershire,
WR11 8SW
Tel: 01789 491860
Fax: 01789 778683
www.spearheadmachinery.com
enquiries@spearheadmachinery.com

Ordering Your Parts:

When ordering parts please refer to your parts list to help your dealer with your order.

Part number and quantity
Description
Machine model number
Serial number of the machine
Delivery instructions (e.g. next day).

Delivery is normally via carrier direct to your dealer. Please check with your dealer for stock availability and arrangement of dispatch. Ensure you or your dealer has sufficient cover for parts requirement outside factory hours.

When ordering your gearbox parts please quote both codes stamped on the gearbox housing.

Important Note

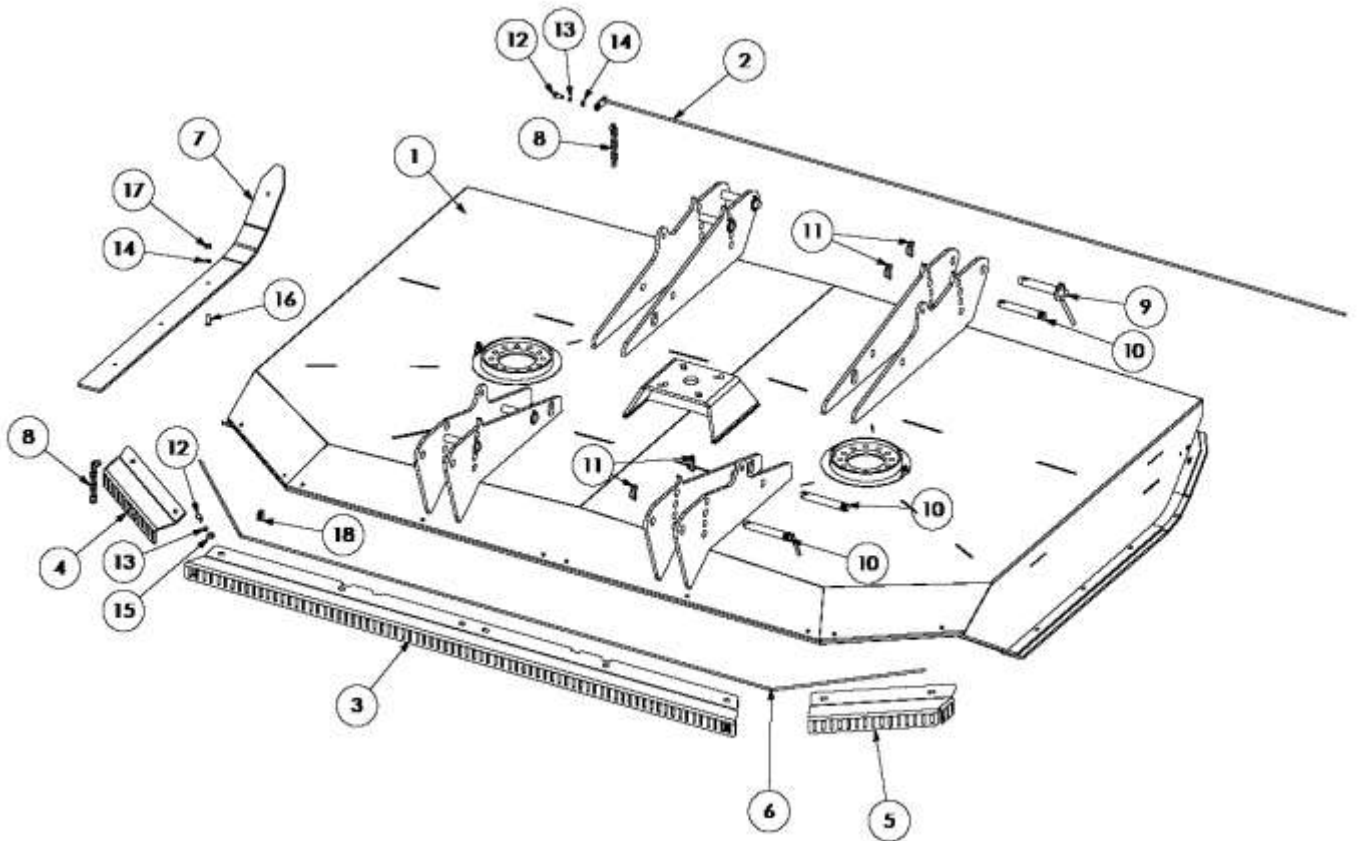
The information contained in this manual is correct at the time of publication. However, in the course of constant development, changes in specification are inevitable. Should you find the information given in this book different to the machine it relates to, please contact the "After Sales Department" for advise.

Key:

(LH) = Left hand
(RH) = *Right hand*

STARCUT 300

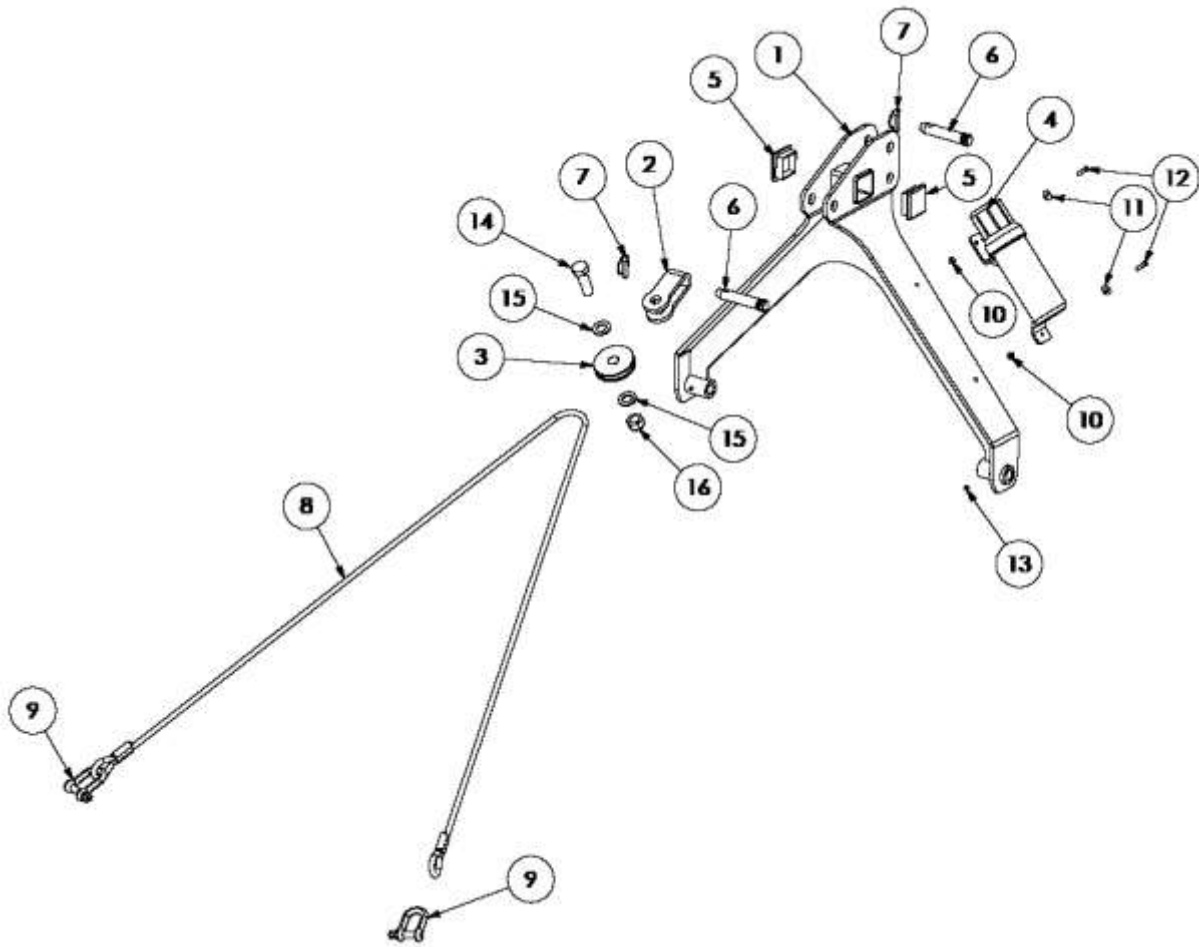
MAIN DECK – S180036.01



Ref.	Part No.	Qty.	Description.
1	180327	1	MAIN DECK
2	180845	1	CHAIN RETAINING BAR
3	180330	1	REAR CENTRE CHAIN GUARD
4	180331	1	REAR LH CHAIN GUARD
5	180332	1	REAR RH CHAIN GUARD
6	6770926	1	WIRE ROPE
7	180068	2	SKID
8	46943.21	224	7 LINK CHAIN
9	07.574.01	2	LOWER LINK PIN
10	6310235	6	TOP LINK PIN
11	00.372.01	8	LYNCH PIN
12	2770407	11	BOLT
13	2770469	11	SPRING WASHER
14	2770434	9	FLAT WASHER
15	2770437	10	REPAIR WASHER
16	2770509	8	SKT CSK BOLT
17	2770412	8	NYLOCK NUT
18	6770907	2	WIRE ROPE GRIP

STARCUT 300

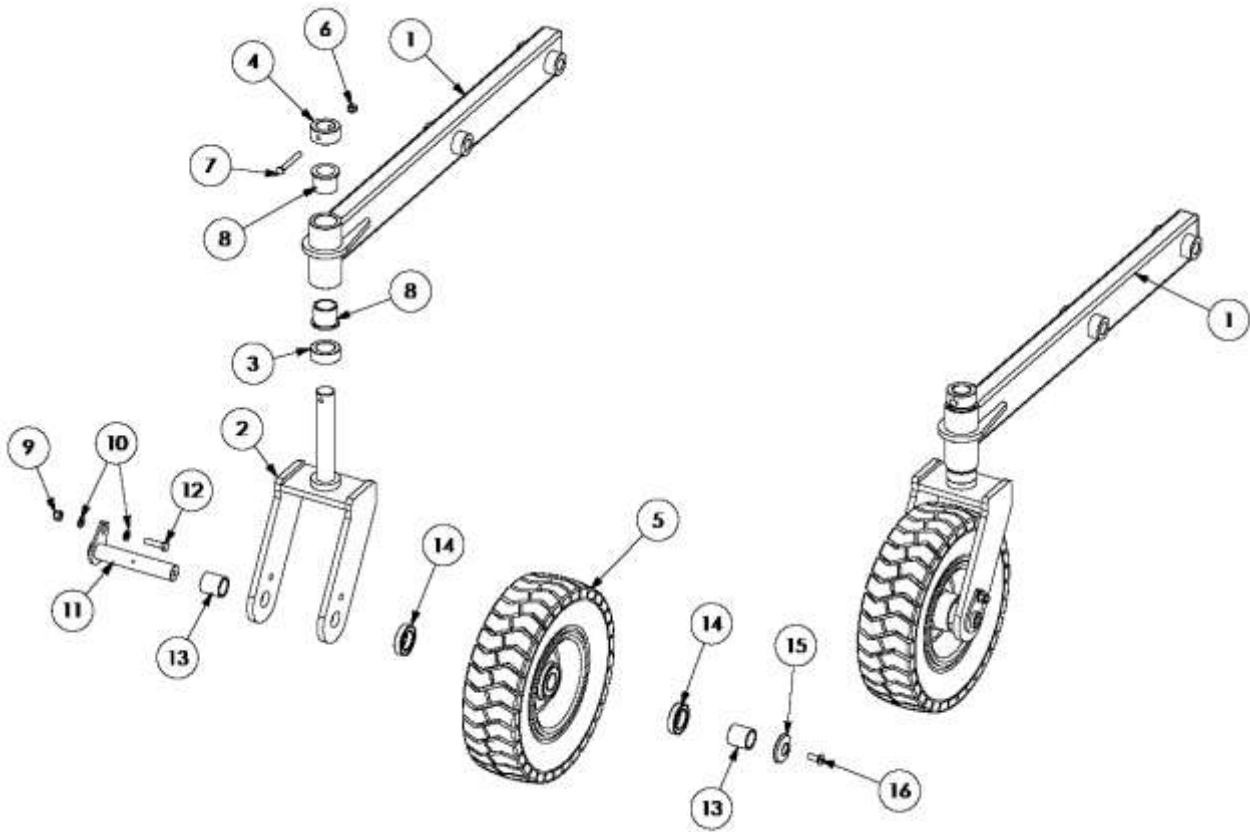
HEADSTOCK – S180036.02



Ref.	Part No.	Qty.	Description.
1	1800049	1	HEADSTOCK
2	1560120	1	WIRE ROPE PULLEY BRACKET
3	1560121	1	WIRE ROPE PULLEY
4	46505.01	1	DOCUMENT FLASK
5	8777518	2	PLASTIC CAP
6	6310203	2	TOP LINK PIN
7	00.372.01	2	LYNCH PIN
8	6770922	1	WIRE ROPE
9	6777575	2	D SHACKLE
10	2770416	2	NYLOCK NUT
11	2770244	2	REPAIR WASHER
12	2770368	2	SKT BUTTON BOLT
13	2770467	2	GREASE NIPPLE
14	2770413	1	BOLT
15	2770464	2	FLAT WASHER
16	2770414	1	NYLOCK NUT

STARCUT 300

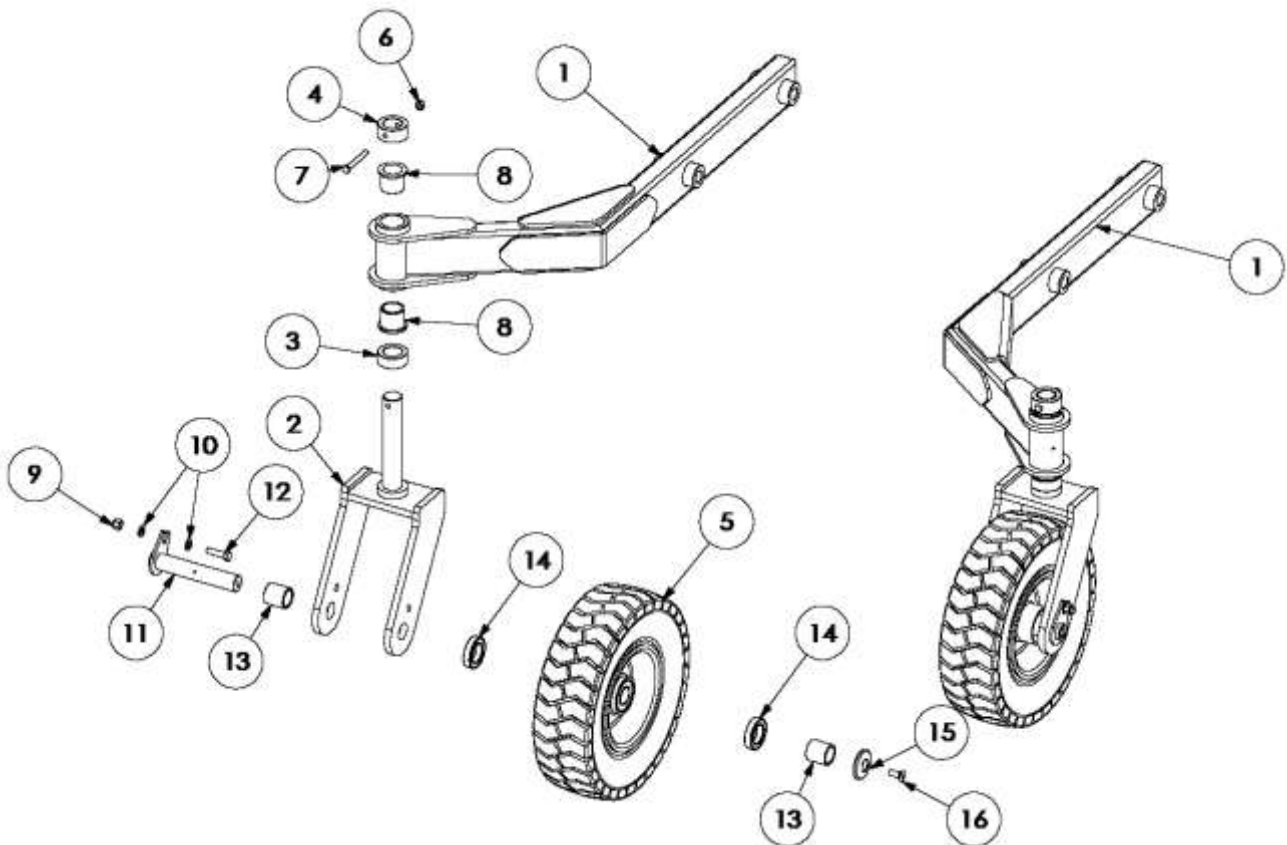
WHEEL ARMS – S180036.I3



Ref.	Part No.	Qty.	Description.
1	1770401A	2	WHEEL ARM
2	1770399A	2	WHEEL YOKE
3	1777524	2	SPACER BUSH
4	1777700	2	CLAMPING BUSH
5	6770680B	2	WHEEL ASSEMBLY
6	2770412	2	NYLOCK NUT
7	2770411	2	BOLT
8	4600127-A	4	BUSH
9	2770417	2	NYLOCK NUT
10	2770436	4	FLAT WASHER
11	1560130	2	PEAR PIN
12	2770397	2	BOLT
13	1560131	4	SPACER
14	4771600	4	WHEEL BEARING
15	1777208	2	RETAINING WASHER
16	2770506	2	SKT CSK BOLT

STARCUT 300

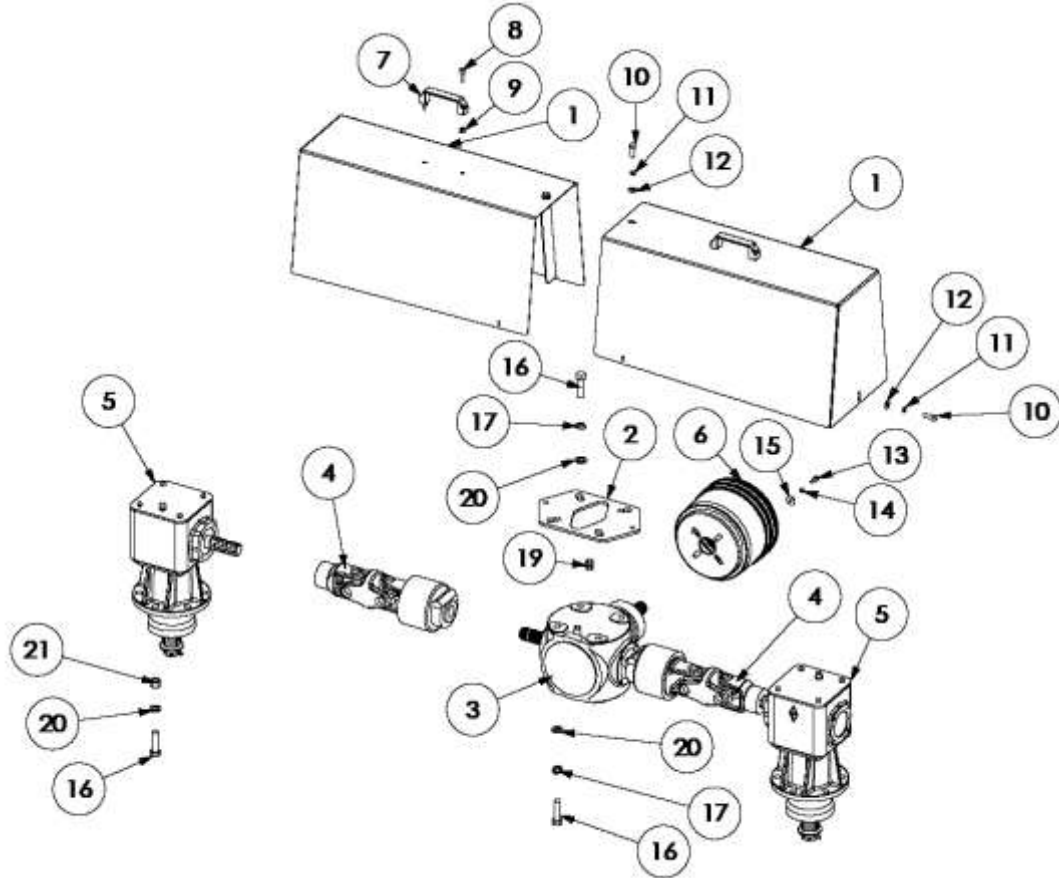
WHEEL ARMS – S180036.03



Ref.	Part No.	Qty.	Description.
1	180345	2	WHEEL ARM
2	1770399A	2	WHEEL YOKE
3	1777524	2	SPACER BUSH
4	1777700	2	CLAMPING BUSH
5	6770680B	2	WHEEL ASSEMBLY
6	2770412	2	NYLOCK NUT
7	2770411	2	BOLT
8	4600127-A	4	BUSH
9	2770417	2	NYLOCK NUT
10	2770436	4	FLAT WASHER
11	1560130	2	PEAR PIN
12	2770397	2	BOLT
13	1560131	4	SPACER
14	4771600	4	WHEEL BEARING
15	1777208	2	RETAINING WASHER
16	2770506	2	SKT CSK BOLT

STARCUT 300

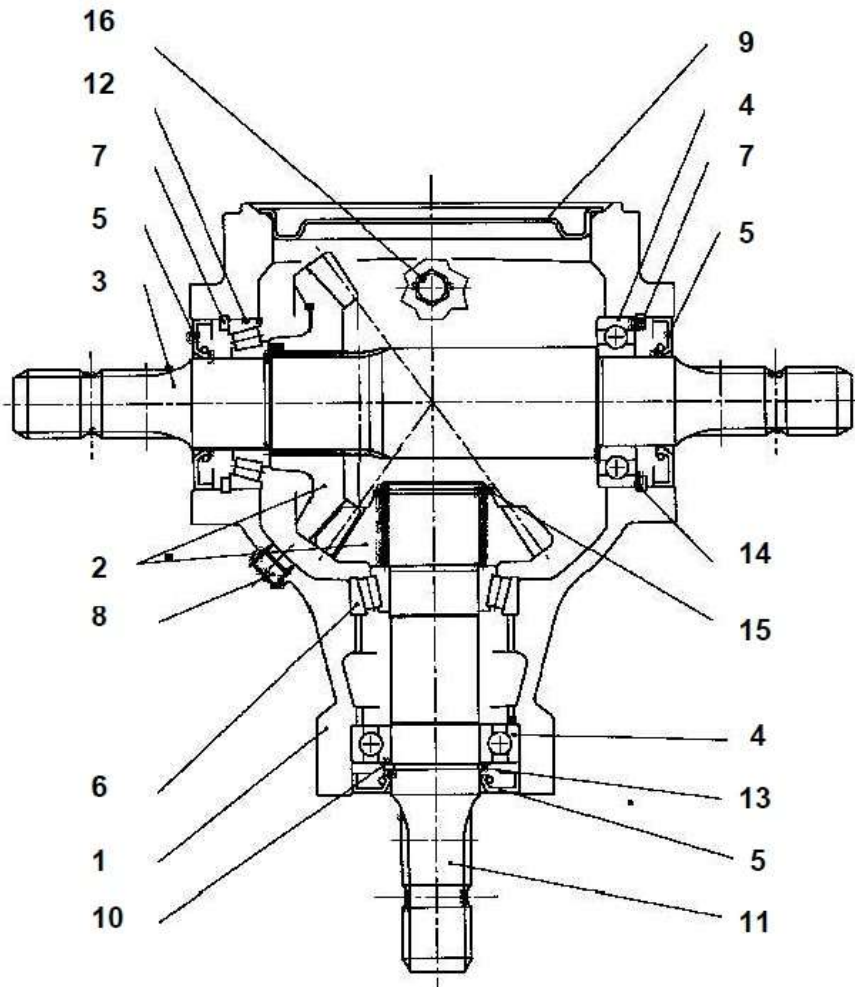
DRIVE LINE – S180036.14



Ref.	Part No.	Qty.	Description.
1	180329	2	GUARD
2	180344	1	MOUNT PLATE
3	5769992	1	SPLITTER GEARBOX
4	5770065A	2	CROSS SHAFT/RUBBER CUSHION
5	5770430	2	ROTOR GEARBOX
6	21839.01	1	CONE
7	8777513	2	HANDLE
8	2770368	4	SKT CAP BOLT
9	2770416	4	NYLOCK NUT
10	2770407	4	BOLT
11	2770469	4	SPRING WASHER
12	2770437	4	REPAIR WASHER
13	2770401	4	BOLT
14	2770433	4	SPRING WASHER
15	2770244	4	REPAIR WASHER
16	2770423	18	BOLT
17	2770456	6	SPRING WASHER
18	N/A	-	-
19	N/A	1	BREATHER PLUG
20	2770454	18	FLAT WASHER
21	2770447	12	NYLOCK NUT

STARCUT 300

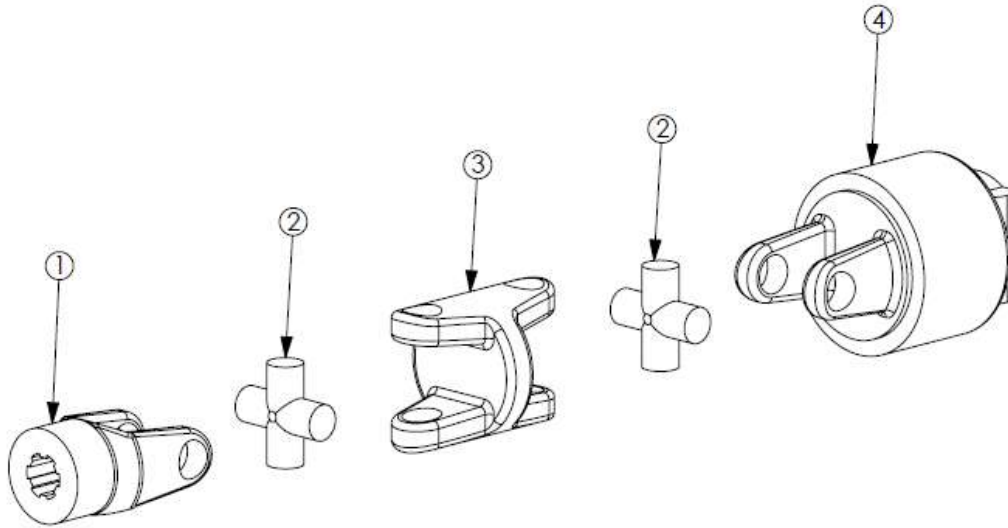
SPLITTER GEARBOX - 5769992



Ref.	Part No.	Qty.	Description.
1	N/A	-	-
2	5771501	1	GEAR SET
3	5771506	1	SHAFT - 6 SPLINE
4	4771599	2	BEARING
5	4771507	2	SEAL
6	4770660	1	BEARING
7	2777518	2	CIRCLIP
8	5777208	1	PLUG
9	5771507	1	COVER
10	2777518	1	CIRCLIP
11	5771424A	1	SHAFT - 6 SPLINE
12	5772341	1	BEARING
13	5772349	1	CIRCLIP
14	5772362/3/4/5	-	SHIMS
15	5772336/7/8/9	-	SHIMS
16	5777204	1	BREATHER

STARCUT 300

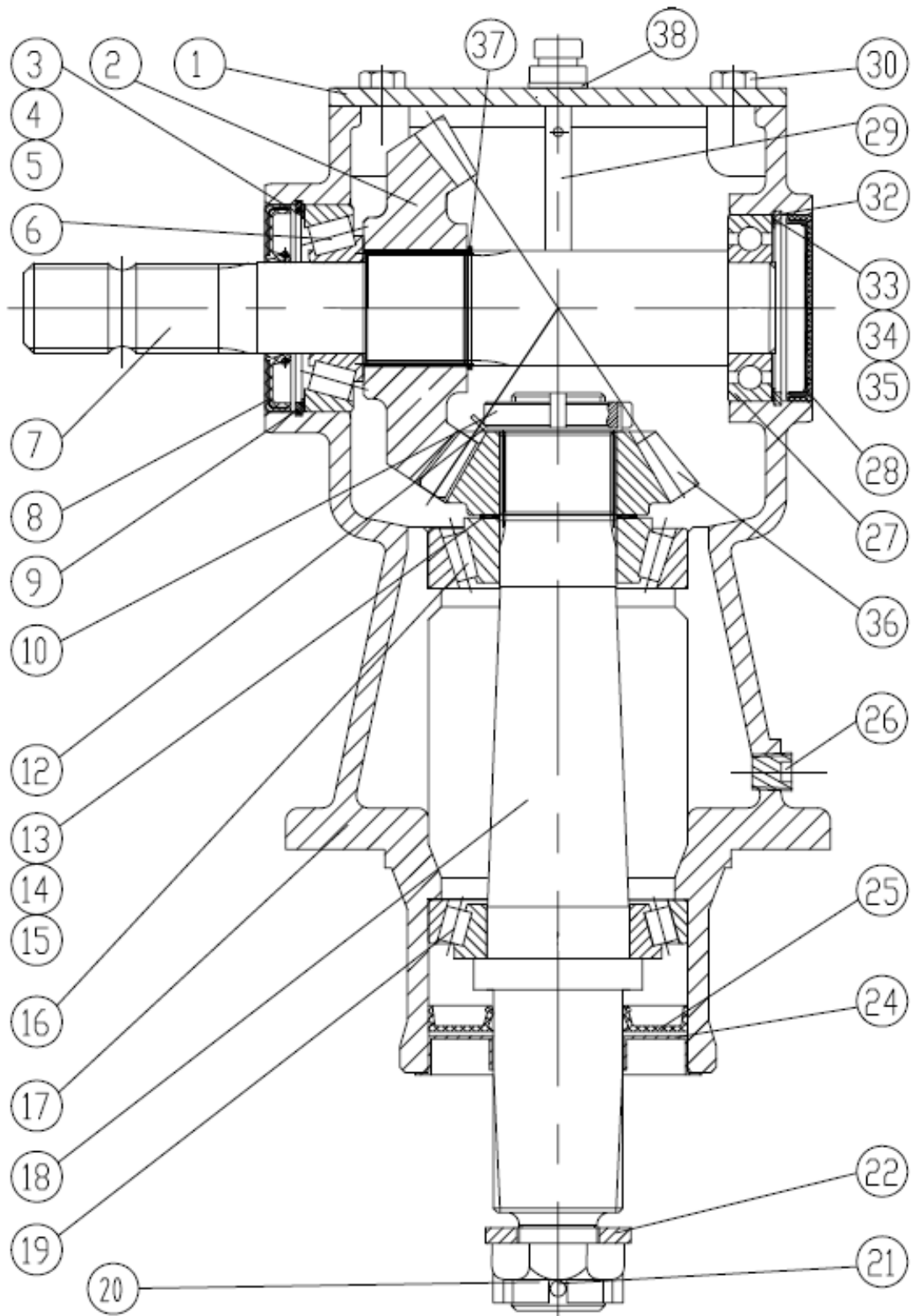
CROSS SHAFT - 5770065A



Ref.	Part No.	Qty.	Description.
1	5771296	1	YOKE - 6 SPLINE
2	5771301	2	CROSS AND BEARING KIT
3	5770092	1	DOUBLE YOKE
4	5770124	1	RUBBER COUPLING

STARCUT 300

WALTERSCHEID ROTOR BOX - 5770430



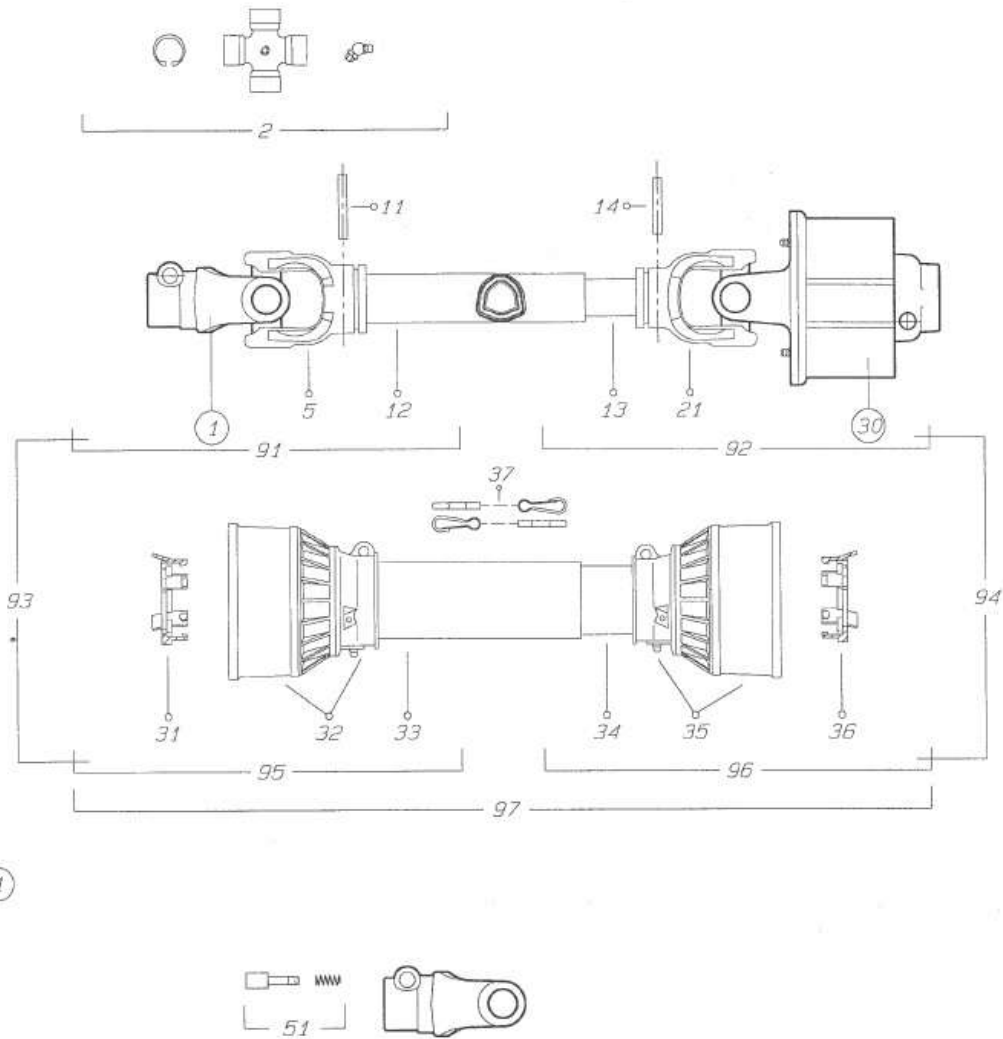
STARCUT 300

WALTERSCHEID ROTOR BOX - 5770430

Ref.	Part No.	Qty.	Description.
1	5770412.16	1	COVER
2	5770430.01	1	CENTRE GEAR - Z24
3	-	-	SHIM
4	-	-	SHIM
5	-	-	SHIM
6	4771601	1	BEARING
7	5770413.01	1	LH SHAFT - Z6
8	4771124	1	SEAL
9	-	1	CIRCLIP
10	-	1	NUT
12	-	1	WASHER
13	-	-	SHIM
14	-	-	SHIM
15	-	-	SHIM
16	4771603	1	BEARING
18	5770430.02	1	OUTPUT SHAFT
19	4771602	1	BEARING
20	-	1	NUT
21	-	1	PIN
22	-	1	WASHER
24	5770420.01	1	SHIELD
25	5770420.02	1	SEAL
26	-	1	PLUG
27	4771600	1	BEARING
28	4771503	1	CAP
29	5770420.06	1	DIPSTICK AND BREATHER
30	-	4	BOLT
32	-	1	CIRCLIP
33	-	-	SHIM
34	-	-	SHIM
35	-	-	SHIM
36	5770430.03	1	GEAR - Z16
37	-	1	CIRCLIP
38	5770420.06	1	DIPSTICK AND BREATHER

STARCUT 300

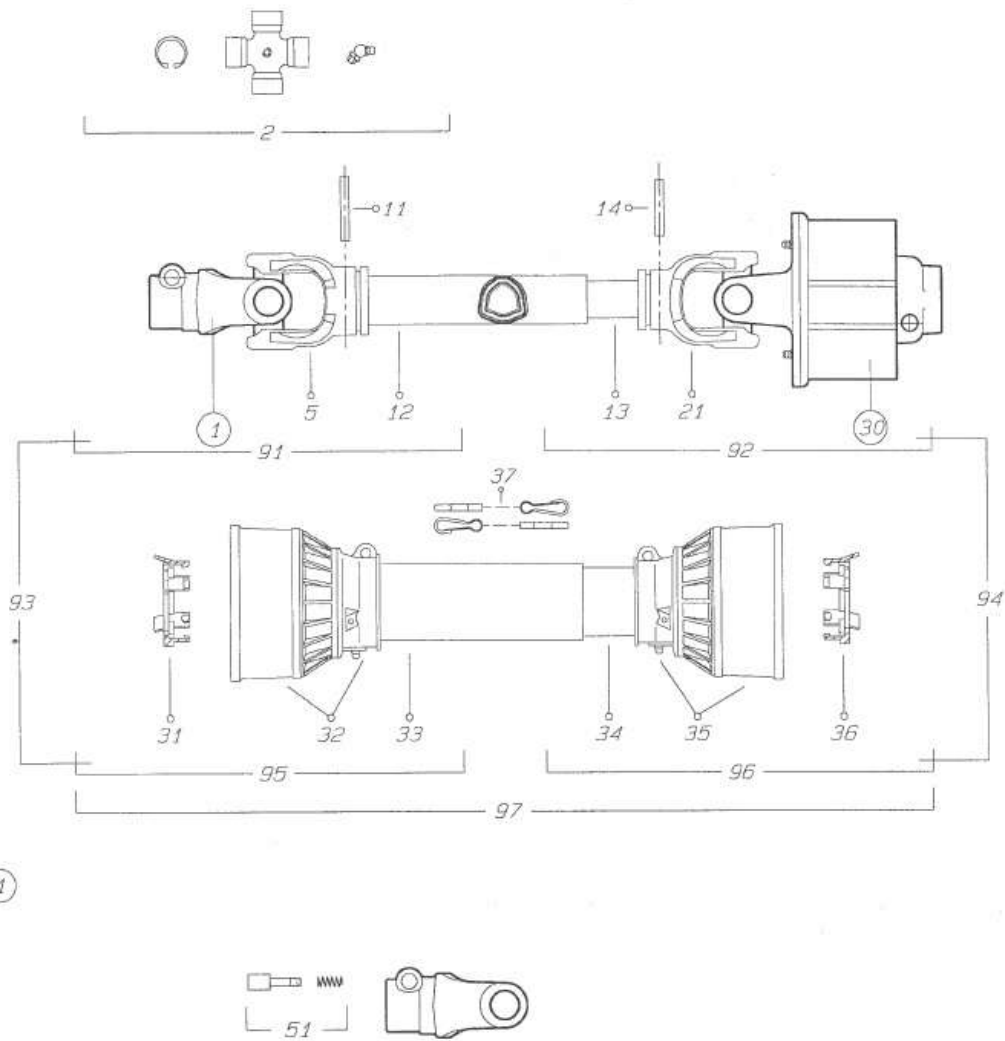
INPUT SHAFT - REAR MOUNT - S180036.I5



Ref.	Part No.	Qty.	Description.
	5769993	-	INPUT SHAFT - 6 SPLINE
	5769994	-	INPUT SHAFT - 21 SPLINE
1	5771299	1	YOKE - 6 SPLINE
	5771298	1	YOKE - 21 SPLINE
2	5771301	2	CROSS JOURNAL
5	5770095	1	YOKE
11	2770542	1	PIN
12	5772277	1	OUTER TUBE PROFILE
13	5772278	1	INNER TUBE PROFILE
14	2770542	1	PIN
30	5770152A	1	CLUTCH - 1000RPM - 6 SPLINE
31	5771308	1	BEARING COLLAR
36	5771313	1	BEARING COLLAR
37	5771020	2	CHAIN
97	5772262B	1	FULL GUARD SET

STARCUT 300

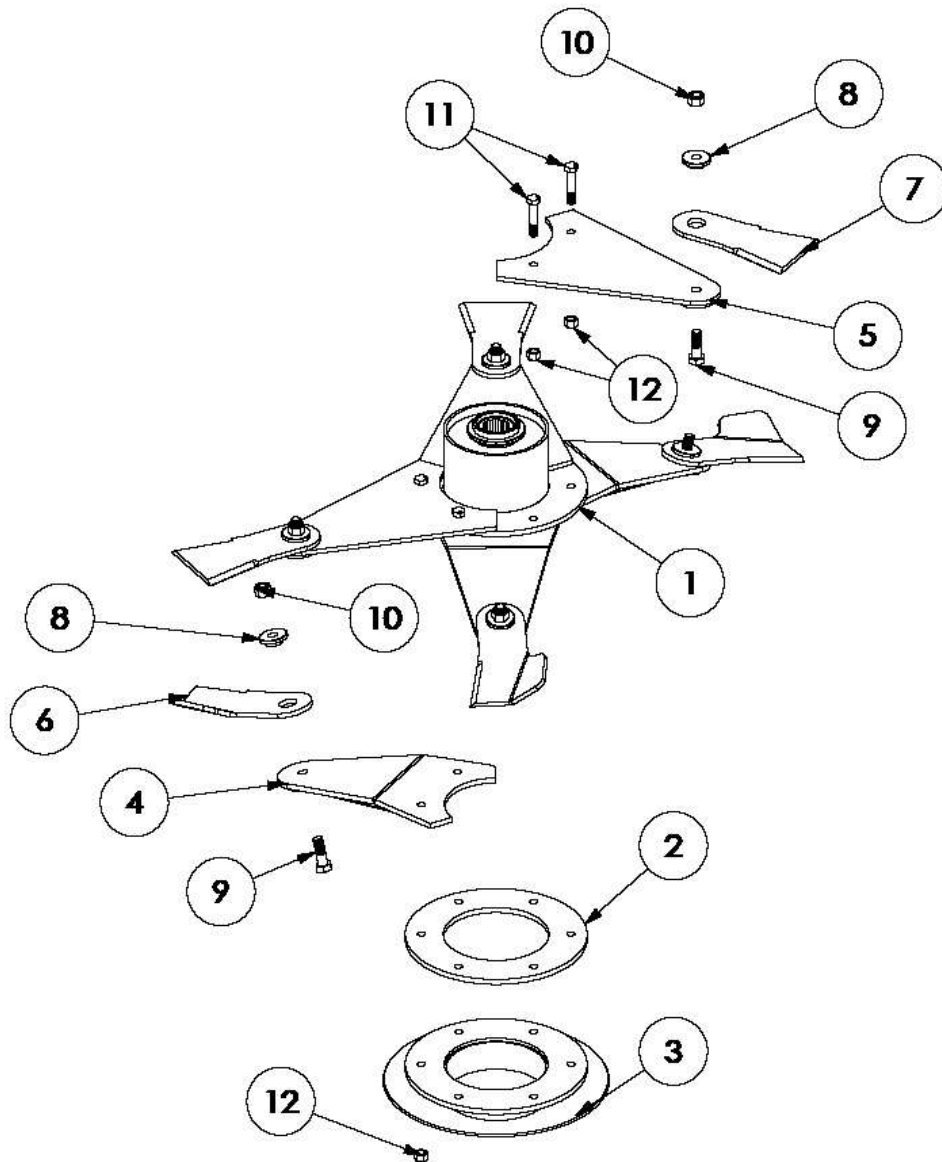
INPUT SHAFT - FRONT MOUNT - S180036.16



Ref.	Part No.	Qty.	Description.
	-	-	INPUT SHAFT - 6 SPLINE
	-	-	INPUT SHAFT - 21 SPLINE
1	5771299	1	YOKE - 6 SPLINE
	5771298	1	YOKE - 21 SPLINE
2	5771301	2	CROSS JOURNAL
5	5770095	1	YOKE
11	2770542	1	PIN
12	5772277	1	OUTER TUBE PROFILE
13	5772278	1	INNER TUBE PROFILE
14	2770542	1	PIN
30	-	1	CLUTCH - 1000RPM - 6 SPLINE
31	5771308	1	BEARING COLLAR
36	5771313	1	BEARING COLLAR
37	5771020	2	CHAIN
97	5772262B	1	FULL GUARD SET

STARCUT 300

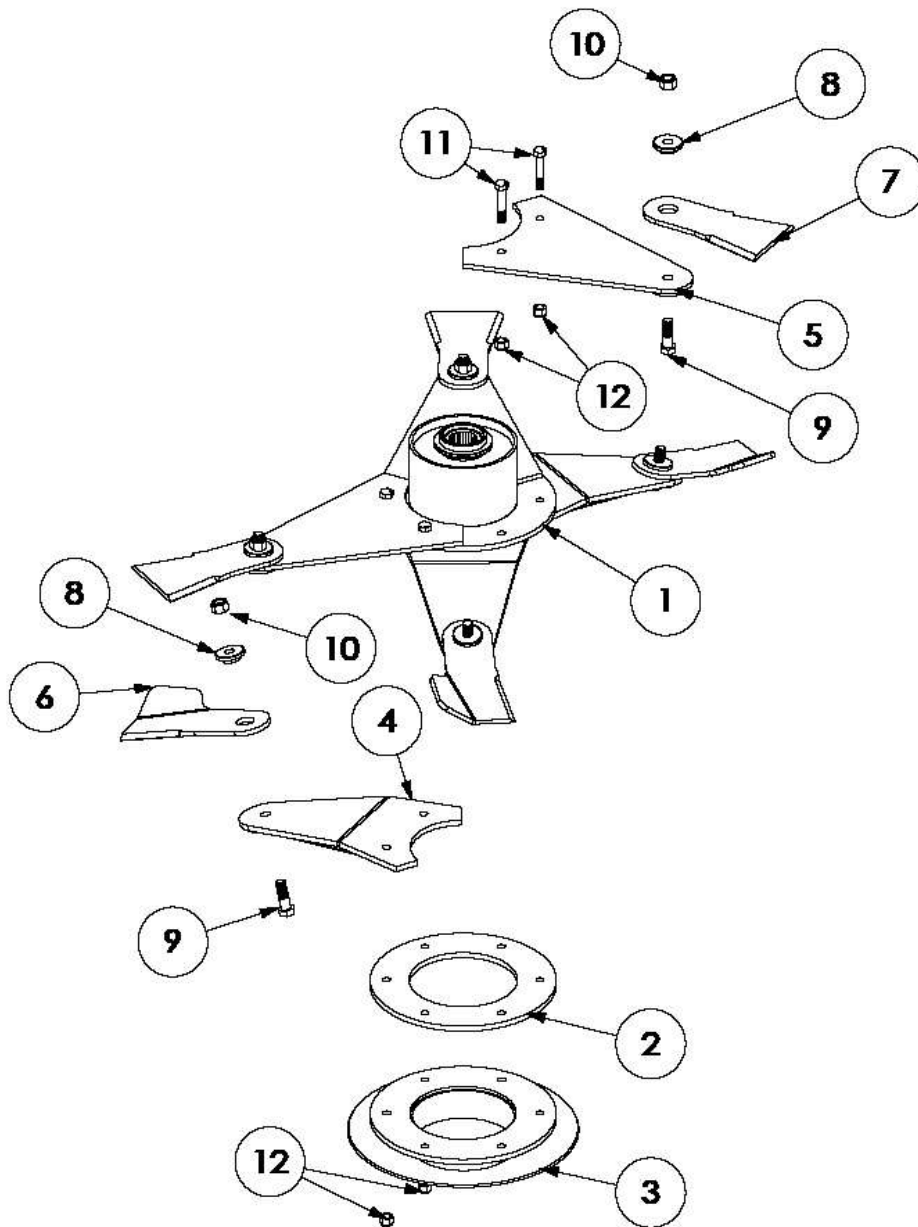
LH MP6 BLADE CARRIER – S180036.05



Ref.	Part No.	Qty.	Description.
1	180333	1	UPPER BLADE CARRIER
2	180016	1	SPACER
3	180770	1	LOWER BLADE CARRIER
4	180334	3	STD BLADE ARM
5	180335	3	STARCUT BLADE ARM
6	7770760	3	LH BLADE
7	7770756	3	STARCUT BLADE
8	7770757	6	BLADE BUSH
9	2770557	6	BOLT - TORQUE SETTING=425Nm
10	2770409	6	NYLOCK NUT
11	2770638	6	BOLT - TORQUE SETTING=280Nm
12	2770447	6	NYLOCK NUT

STARCUT 300

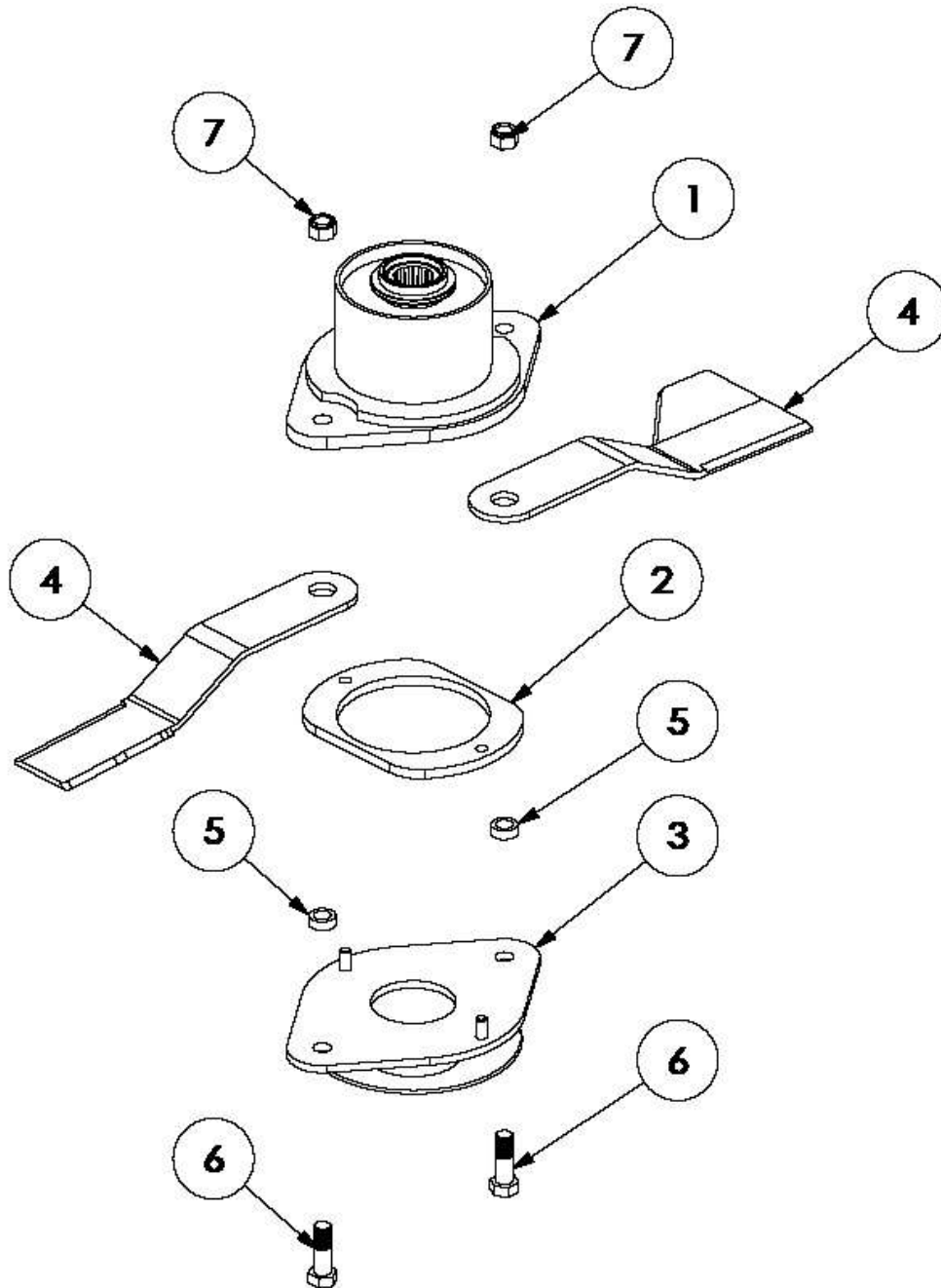
RH MP6 BLADE CARRIER – S180036.06



Ref.	Part No.	Qty.	Description.
1	180333	1	UPPER BLADE CARRIER
2	180015	1	SPACER
3	180770	1	LOWER BLADE CARRIER
4	180334	3	STD BLADE ARM
5	180335	3	STARCUT BLADE ARM
6	7770761	3	RH BLADE
7	7770756	3	STARCUT BLADE
8	7770757	6	BLADE BUSH
9	2770557	6	BOLT - TORQUE SETTING=425Nm
10	2770409	6	NYLOCK NUT
11	2770638	6	BOLT - TORQUE SETTING=280Nm
12	2770447	6	NYLOCK NUT

STARCUT 300

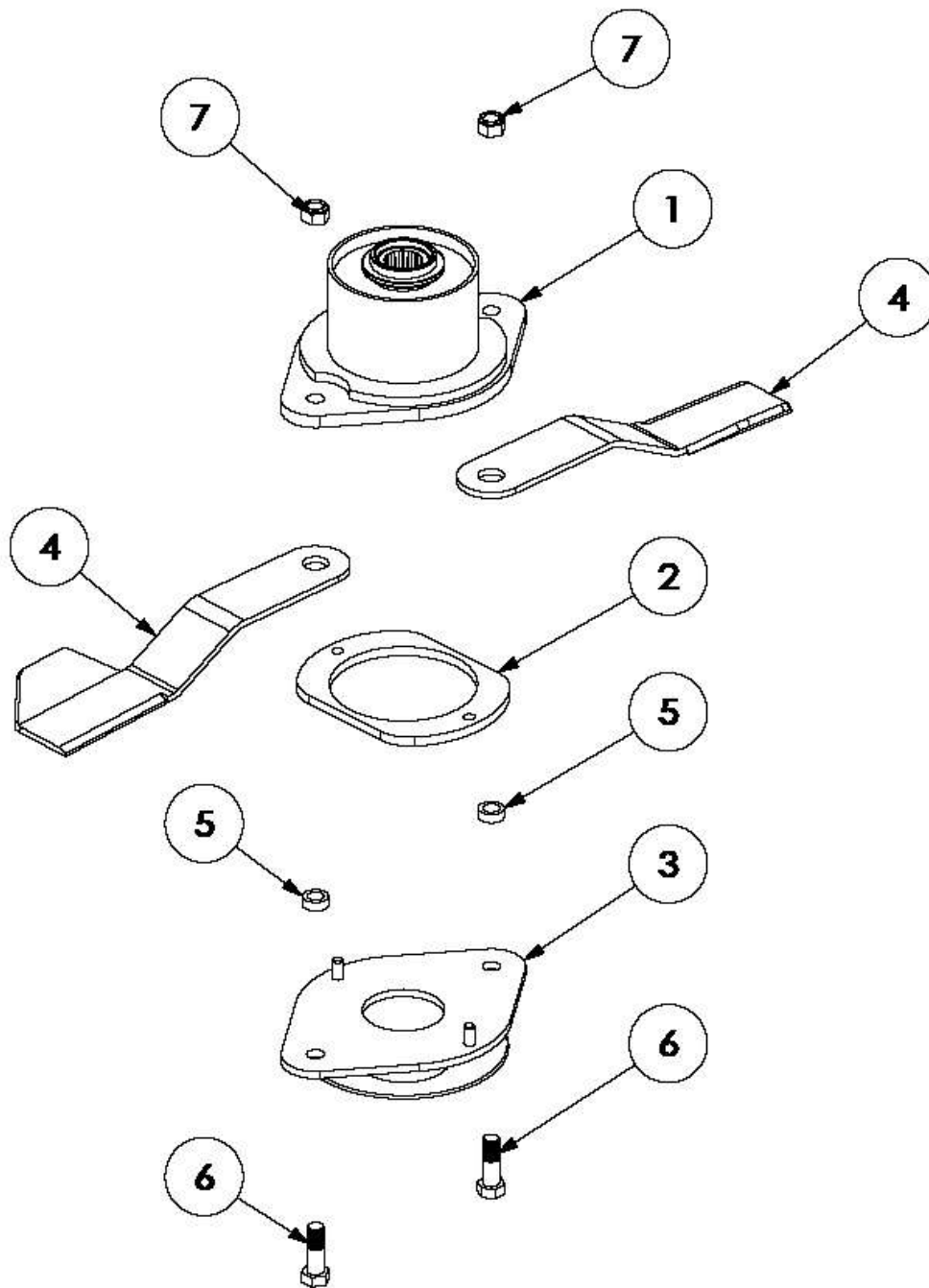
LH HD2 BLADE CARRIER – S180036.07



Ref.	Part No.	Qty.	Description.
1	180341	1	UPPER BLADE CARRIER
2	180343	1	SPACER
3	180342	1	LOWER BLADE CARRIER
4	7770702	2	LH BLADE
5	7770707	2	BLADE BUSH
6	2770413	2	BOLT - TORQUE SETTING=950Nm
7	2770414	2	NYLOCK NUT

STARCUT 300

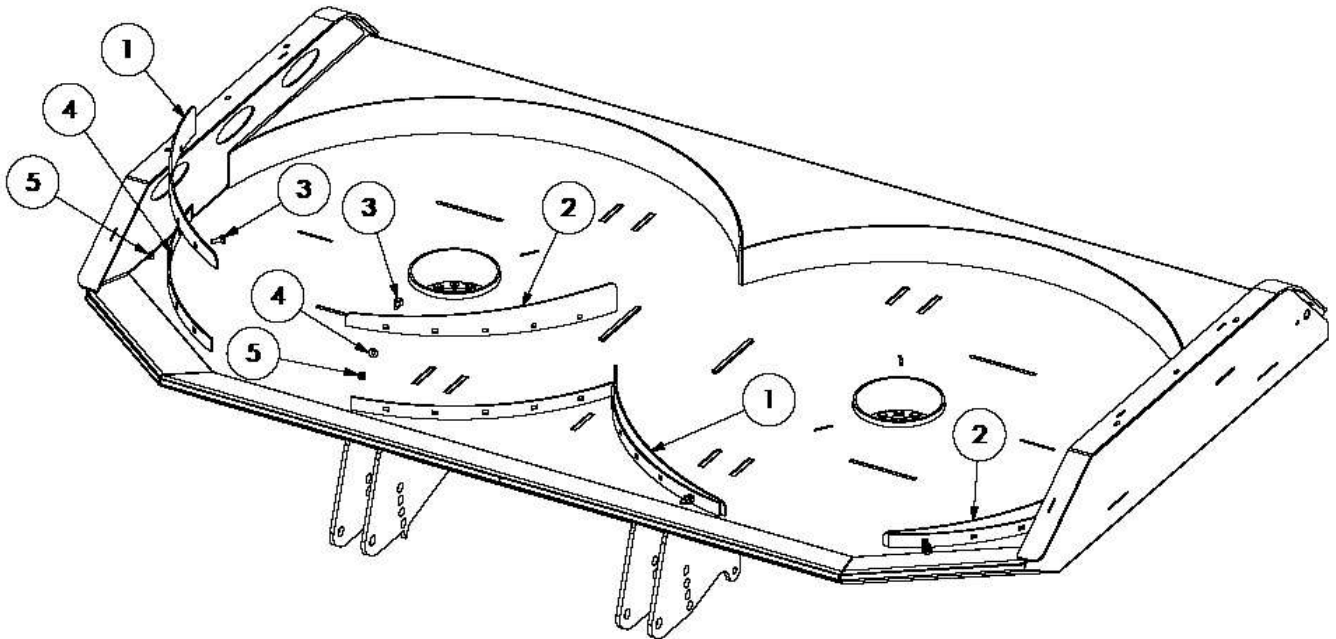
RH HD2 BLADE CARRIER – S180036.08



Ref.	Part No.	Qty.	Description.
1	180341	1	UPPER BLADE CARRIER
2	180343	1	SPACER
3	180342	1	LOWER BLADE CARRIER
4	7770703	2	RH BLADE
5	7770707	2	BLADE BUSH
6	2770413	2	BOLT - TORQUE SETTING=950Nm
7	2770414	2	NYLOCK NUT

STARCUT 300

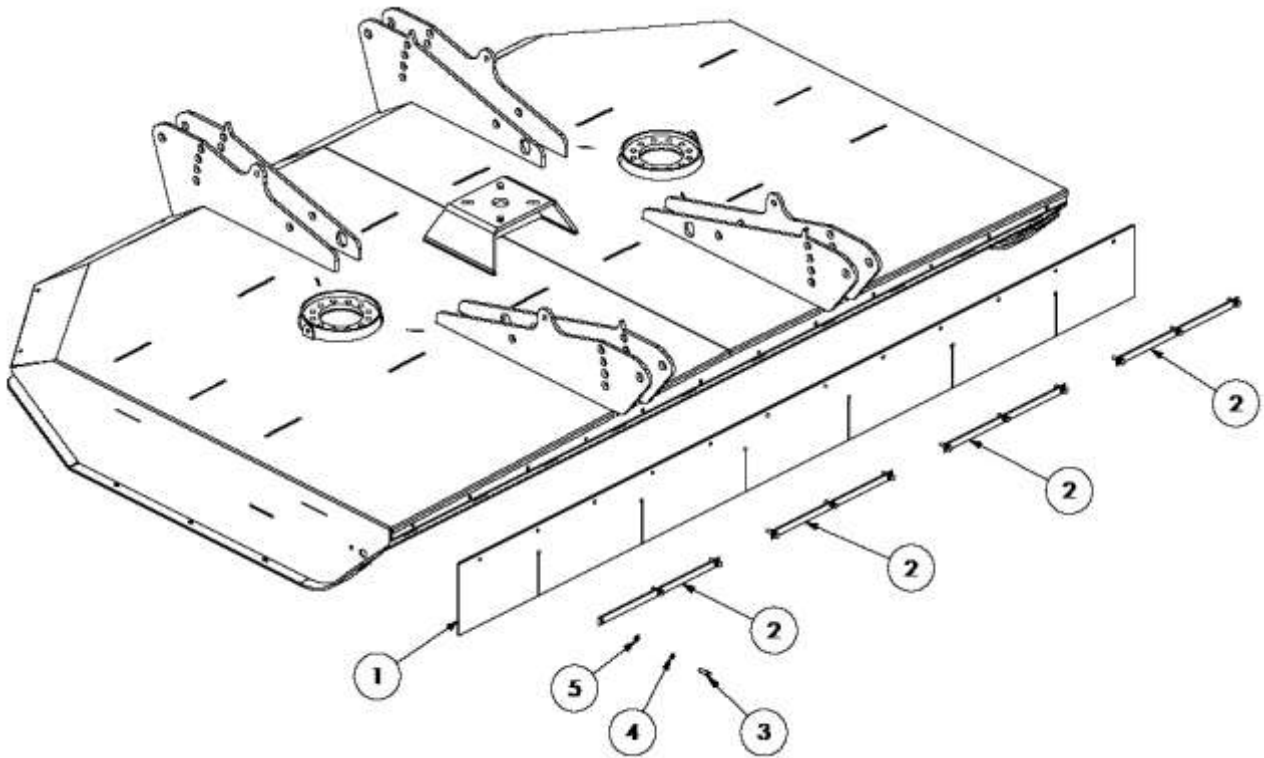
BAFFLE KIT – S180036.09



Ref.	Part No.	Qty.	Description.
1	180339	2	RH BAFFLE
2	180340	2	LH BAFFLE
3	2770615	20	COACH BOLT
4	2770437	20	REPAIR WASHER
5	2770412	20	NYLOCK NUT

STARCUT 300

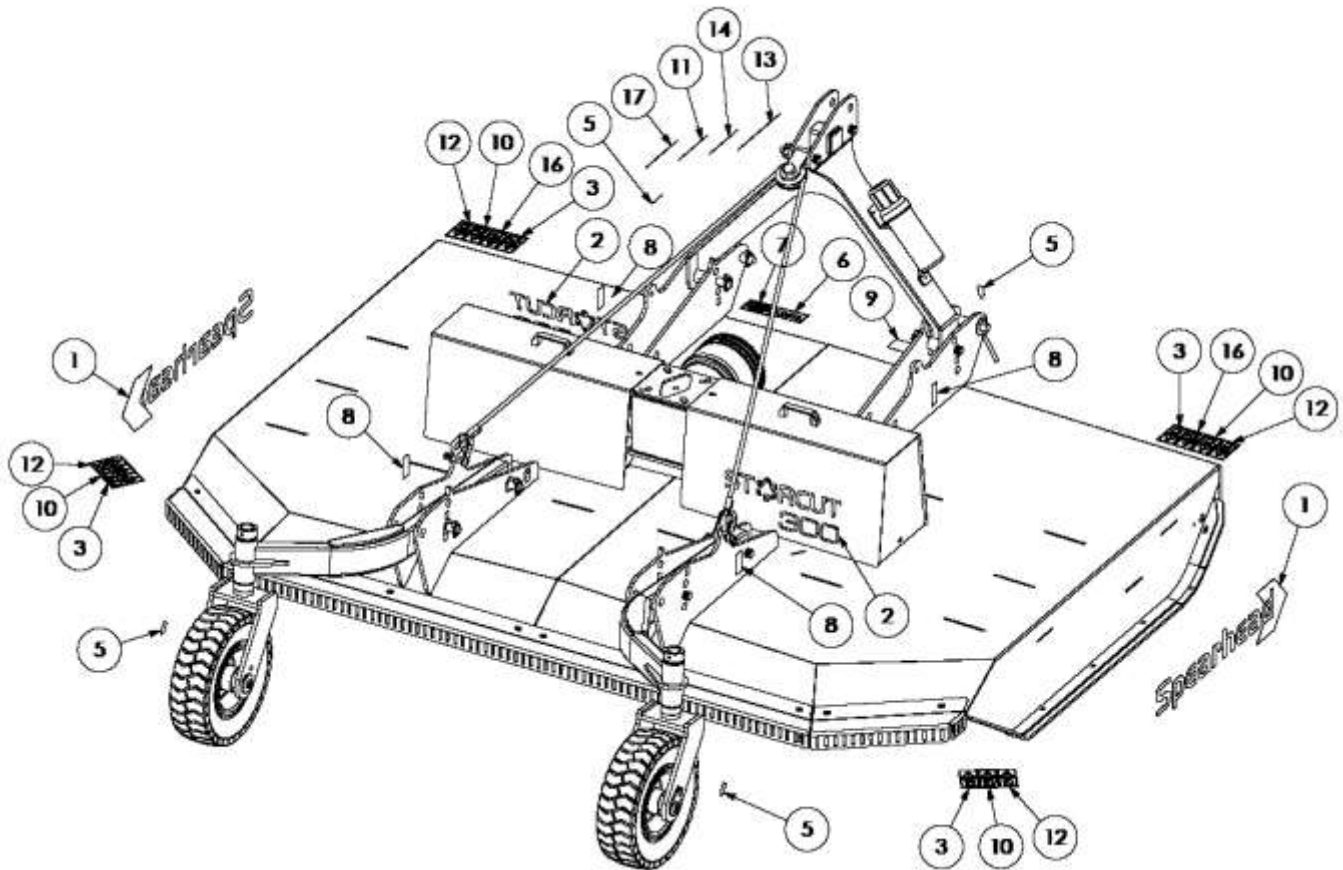
FRONT RUBBER FLAP KIT - S180036.IO



Ref.	Part No.	Qty.	Description.
1	8770467	1	RUBBER FLAP
2	180200	4	RETAINING PLATE
3	2770396	12	BOLT
4	2770469	12	SPRING WASHER
5	2770434	12	FLAT WASHER

STARCUT 300

STARCUT 300 DECALS - 5180036.12



Ref.	Part No.	Qty.	Description.
1	8770371	2	SPEARHEAD - 840mm
2	8770664	2	STARCUT 300 DECAL
3	8770306	4	BOLTS TIGHT
4	8770307	2	MANUFACTURED IN GB
5	8770322	4	GREASE POINT
6	8770323	1	1000RPM PTO
7	8770330	1	SERIAL NUMBER PLATE
8	8770342	4	SLING STICKER
9	8770346	1	CHECK CHAINS
10	8770357	4	KEEP SAFE DISTANCE
11	8770358	1	SHUT OFF ENGINE
12	8770361	4	STAY CLEAR OF MOWER BLADES
13	8770363	1	OPERATORS MANUAL
14	8770367	1	READ MANUAL
15	8999062	1	MANUAL
16	8770451	2	NO RIDING
17	8770439	1	WEAR EAR PROTECTION

Spearhead Machinery
Green View,
Salford Priors,
Evesham,
Worcestershire,
WR11 8SW

Tel: 01789 491860

Fax: 01789 778683

www.spearheadmachinery.com

enquiries@spearheadmachinery.com