

Spearhead

Multicut 300



9th Edition – JULY 2017
Part No. 8999009

HANDBOOK & PARTS MANUAL

Spearhead Multicut 300

IMPORTANT

VERIFICATION OF WARRANTY REGISTRATION



DEALER WARRANTY INFORMATION & REGISTRATION VERIFICATION

It is imperative that the selling dealer registers this machine with Spearhead Machinery Limited before delivery to the end user – failure to do so may affect the validity of the machine warranty.

To register machines go to the Spearhead Machinery Limited web site at www.spearheadmachinery.com, log onto 'Dealer Inside' and select the 'Machine Registration button' which can be found in the Service Section of the site. Confirm to the customer that the machine has been registered in the section below.

Should you experience any problems registering a machine in this manner please contact the Spearhead Service Department on 01789 491867.

Registration Verification

Dealer Name:
Dealer Address:
Customer Name:
Date of Warranty Registration:/...../.....
Dealer Signature:

NOTE TO CUSTOMER / OWNER

Please ensure that the above section has been completed and signed by the selling dealer to verify that your machine has been registered with Spearhead Machinery Limited.

IMPORTANT: During the initial 'bedding in' period of a new machine it is the customer's responsibility to regularly inspect all nuts, bolts and hose connections for tightness and re-tighten if required. New hydraulic connections occasionally weep small amounts of oil as the seals and joints settle in – where this occurs it can be cured by re-tightening the connection – refer to torque settings chart below. The tasks stated above should be performed on an hourly basis during the first day of work and at least daily thereafter as part of the machines general maintenance procedure.

CAUTION: DO NOT OVER TORQUE HYDRAULIC FITTINGS AND HOSES

TORQUE SETTINGS FOR HYDRAULIC FITTINGS

HYDRAULIC HOSE ENDS		
BSP	Setting	Metric
1/4"	18 Nm	19 mm
3/8"	31 Nm	22 mm
1/2"	49 Nm	27 mm
5/8"	60 Nm	30 mm
3/4"	80 Nm	32 mm
1"	125 Nm	41 mm
1.1/4"	190 Nm	50 mm
1.1/2"	250 Nm	55 mm
2"	420 Nm	70 mm

PORT ADAPTORS WITH BONDED SEALS		
BSP	Setting	Metric
1/4"	34 Nm	19 mm
3/8"	47 Nm	22 mm
1/2"	102 Nm	27 mm
5/8"	122 Nm	30 mm
3/4"	149 Nm	32 mm
1"	203 Nm	41 mm
1.1/4"	305 Nm	50 mm
1.1/2"	305 Nm	55 mm
2"	400 Nm	70 mm

WARRANTY POLICY

WARRANTY REGISTRATION

All machines must be registered, by the selling dealer with Spearhead Machinery Ltd, before delivery to the end user. On receipt of the goods it is the buyer's responsibility to check that the Verification of Warranty Registration in the Operator's Manual has been completed by the selling dealer.

1. LIMITED WARRANTIES

- 1.01. All machines supplied by Spearhead Machinery Limited are warranted to be free from defects in material and workmanship from the date of sale to the original purchaser for a period of 12 months, unless a different period is specified.
- 1.02. All spare parts supplied by Spearhead Machinery Limited are warranted to be free from defects in material and workmanship from the date of sale to the original purchaser for a period of 6 months.
- 1.03. The manufacturer will replace or repair for the purchaser any part or parts found, upon examination at its factory, to be defective under normal use and service due to defects in material or workmanship. Returned parts must be complete and unexamined.
- 1.04. This warranty does not apply to any part of the goods, which has been subjected to improper or abnormal use, negligence, alteration, modification, fitment of non-genuine parts, accident damage, or damage resulting from contact with overhead power lines, damage caused by foreign objects (e.g. stones, iron, material other than vegetation), failure due to lack of maintenance, use of incorrect oil or lubricants, contamination of the oil, or which has served its normal life. This warranty does not apply to any expendable items such as blades, flails, bushes, belts, flap kits, skids, shields, guards, wear pads or pneumatic tyres.
- 1.05. Temporary repairs and consequential loss - i.e. oil, downtime and associated parts are specifically excluded from the warranty.
- 1.06. Warranty on hoses is limited to 12 months and does not include hoses which have suffered external damage. Only complete hoses may be returned under warranty, any which have been cut or repaired will be rejected.
- 1.07. Machines must be repaired immediately a problem arises. Continued use of the machine after a problem has occurred can result in further component failures, for which Spearhead Machinery Ltd cannot be held liable, and may have safety implications.
- 1.08. Except as provided herein, no employee, agent, dealer or other person is authorised to give any warranties of any nature on behalf of Spearhead Machinery Ltd.
- 1.09. For machine warranty periods in excess of 12 months the following additional exclusions shall apply:
 - 1.09.1. Hoses, external seals, exposed pipes and hydraulic tank breathers.
 - 1.09.2. Filters
 - 1.09.3. Rubber mountings
 - 1.09.4. External electric wiring.
 - 1.09.5. Labour and mileage costs.
- 1.10. All service work, particularly filter changes, must be carried out in accordance with the manufacturer's service schedule. Failure to comply will invalidate the warranty. In the event of a claim, proof of the service work being carried out may be required.

NB Warranty cover will be invalid if any non-genuine parts have been fitted or used. Use of non-genuine parts may seriously affect the machine's performance and safety. Spearhead Machinery Ltd cannot be held responsible for any failures or safety implications that arise due to the use of non-genuine parts.

Spearhead Multicut 300

2. REMEDIES AND PROCEDURES

- 2.01. The warranty is not effective unless the Selling Dealer registers the machine, via the Spearhead Machinery web site and confirms the registration to the purchaser by completing the confirmation form in the operator's manual.
- 2.02. Any fault must be reported to an authorised Spearhead Machinery dealer as soon as it occurs. Continued use of a machine, after a fault has occurred, can result in further component failure for which Spearhead Machinery Ltd cannot be held liable.
- 2.03. Repairs should be undertaken within two days of the failure. Claims submitted for repairs undertaken more than 2 weeks after a failure has occurred, or 2 days after the parts were supplied will be rejected, unless the delay has been authorised by Spearhead Machinery Ltd.
- 2.04. All claims must be submitted, by an authorised Spearhead Machinery Service Dealer, within 30 days of the date of repair.
- 2.05. Following examination of the claim and parts the manufacturer will pay, at their discretion, for any valid claim the cost of any parts and an appropriate labour allowance if applicable.
- 2.06. The submission of a claim is not a guarantee of payment.
- 2.07. Any decision reached by Spearhead Machinery Ltd is final.

3. LIMITATION OF LIABILITY

- 3.01. The manufacturer disclaims any express (except as set forth herein) and implied warranties with respect to the goods including, but not limited to, merchantability and fitness for a particular purpose.
- 3.02. The manufacturer makes no warranty as to the design, capability, capacity or suitability for use of the goods.
- 3.03. Except as provided herein, the manufacturer shall have no liability or responsibility to the purchaser or any other person or entity with respect to any liability, loss, or damage caused or alleged to be caused directly or indirectly by the goods including, but not limited to, any indirect, special, consequential, or incidental damages resulting from the use or operation of the goods or any breach of this warranty. Notwithstanding the above limitations and warranties, the manufacturer's liability hereunder for damages incurred by the purchaser or others shall not exceed the price of the goods.
- 3.04. No action arising out of any claimed breach of this warranty or transactions under this warranty may be brought more than one (1) year after the cause of the action has occurred.

4. MISCELLANEOUS

- 4.01. The manufacturer may waive compliance with any of the terms of this limited warranty, but no waiver of any terms shall be deemed to be a waiver of any other term.
- 4.02. If any provision of this limited warranty shall violate any applicable law and is held to be unenforceable, then the invalidity of such provision shall not invalidate any other provisions herein.
- 4.03. Applicable law may provide rights and benefits to the purchaser in addition to those provided herein.

Spearhead Multicut 300

CE Declaration of Conformity, Conforming to EU Machinery Directive 2006/42/EC

We, Spearhead Machinery Ltd, Green View, Salford Priors,
Evesham, Worcestershire, WR11 8SW hereby declare that:

Product.....
Product Code.....
Serial No......
Type.....

Manufactured by: Alamo Manufacturing Services (UK) Limited, Station
Road, Salford Priors, Evesham, Worcestershire, WR11 8SW

Complies with the required provisions of the Machinery Directive
2006/42/EC. The Machinery Directive is supported by the following
harmonized standards:

- BS EN ISO 14121-1 (2007) Safety of Machinery – Risk Assessment,
Part 1: Principles Part 2: Practical Guide and Examples of Methods.
- BS EN ISO 12100-1 (2010) Safety of Machinery – Part 1: Basic
Terminology and Methodology Part 2: Technical Principles.
- BS EN 349 (1993) + A1 (2008) Safety of Machinery – Minimum
Distances to avoid the Entrapment of Human Body Parts.
- BS EN 953 (1998) Safety of Machinery – Guards General
Requirements for the Design and Construction of Fixed and Movable
Guards.
- BS EN 982 (1996) + A1 (2008) Safety Requirements for Fluid Power
Systems and their Components. Hydraulics.

The EC Declaration only applies if the machine stated above is used in
accordance with the operating instructions.

Signed



(On behalf of Spearhead Machinery Ltd)

Status

General Manager

Date

.....

Spearhead Multicut 300

Contents

Important Safety	7
Safety Stickers	8
Introduction	9
Safety First	9
Tractor Requirements	9
Attaching To The Tractor	10
Setting Up & Adjustments – Height	11
Machine Protection	11
Operation	12
Transportation	12

Servicing & Maintenance

Safety First	13
Torque Settings	13
Daily Every 8 Hours	14
Every 16 Hours	14
Regularly	14
Blades	15
Skids	15
Storage	16
After Storage	16
Trouble Shooting Guide	17

Parts List

Ordering Your Parts	18
P.T.O. Shaft	19
Centre Gearbox	21
Rotor Gearbox	23
Main Frame Assembly	25

Spearhead Multicut 300

Important



Safety

- Never operate the machine with other people present, as it is possible for debris, including stones, to be discharged from the front and rear of the flail hood.
- Always ensure all cab safety guards are in place and all tractor windows closed.
- Never allow an inexperienced person to operate the machine without supervision.
- Never allow children to play on or around the machine at any time.
- Never attempt any maintenance or adjustment without first disengaging the PTO, lowering to the ground, stopping the tractor engine and applying the tractor parking brake.
- Before leaving the tractor cab always ensure that the machine is firmly on the ground, and the rotor has stopped spinning
- Never stop the engine with the PTO engaged.
- Always check that all guards are properly fitted, check there are no damage or loose parts. Particular attention should be given to the flails to ensure they are not damaged, cracked or missing.
- Never operate with flails missing.
- Always operate PTO at recommended speed 540/1000 R.P.M as indicated on the sticker.
- Always inspect work area for wire, steel posts, large stones and other dangerous materials and remove before starting work.
- Never operate with wire around rotor. Stop immediately.
- Never attempt to use the machine for any purpose other than that it was designed for.
- Ensure that all warning labels are always visible and that they are not damaged, defaced or missing.
- Never transport with the PTO engaged.
- When parking up always lower to the ground

Spearhead Multicut 300

Safety



Warning
Stay clear of mower blade
as long as engine is
running.



Warning
Danger – flying objects
keep safe distance from
the machine as long as
the engine is running.



Warning
Shut off engine and remove
key before performing
maintenance or repair work.



Warning
Check all nuts are tight
every 8 hours.



Warning
Carefully read operator's
manual before handling this
machine. Observe
instructions and safety rules
when operating.

Spearhead Multicut 300

Introduction

The Spearhead Multi-Cut 300 is a very robust high capacity Rotary Cutter that is easy to operate and maintain, but to ensure trouble-free operation this manual should be carefully studied.

Safety First

Do not start the machine until you fully understand operation and safety precaution requirements. Always ensure the operators are proficient with the operation of this type of this machine.

Tractor Requirements

- Spearhead strongly recommends 75hp-plus tractor with **CATEGORY 2** rear linkage.
- Ensure there is sufficient weight on front wheels of the tractor for safe transport and stability.
- PTO must be independent live drive to enable continuous PTO drive even when tractor clutch is pressed down.
- Before hitching, ensure position control is selected. Do not attempt to hitch in draft control.
- Check chains and stabilizers must be in good working order to hold the machine firmly. Do not operate without checking that chains and stabilizers are tight.
- Spearhead particularly recommend 'turn buckle' type check chains
- Set linkage lift rods to an equal length.

Spearhead Multicut 300

Attaching To The Tractor

Fit the machine to the tractor linkage in the standard way, ensuring the correct match of linkage (**CAT 2 pins**). Check that the top link is in good order and threads are well lubricated. Use stabilisers to take any free movement out of lower link arms.

Before fitting the machine to the tractor linkage you should ensure there is sufficient front weight to ensure the front wheels are always in contact with the ground. This is most important for safe transport and stability when turning on slopes.

Before fitting the PTO for the first time, it may be necessary to adjust the length. There should be maximum engagement of the sliding tubes without bottoming at the shortest operation position. To check, first connect the mower to the tractor. Pull the PTO shaft apart and connect to the tractor PTO output shaft and the gearbox input shaft. Hold the half shafts next to each other in the shortest working position.

If necessary, shorten the inner and outer guard tubes equally (Fig. 2). Shorten the inner and outer sliding profiles by the same length as the guard tubes. File all sharp edges and remove burrs. Grease sliding profiles.

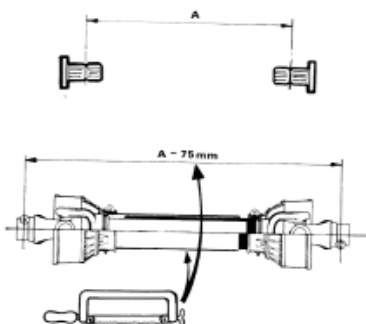


Fig 2

To fit the PTO to the machine, first remove bolt or tapered pin from the slip clutch yoke and push onto splined shaft of gearbox ensuring it is fully engaged before refitting retaining bolt/pin.

To fit the PTO, first clean and grease press pins on the yoke and simultaneously push the PTO drive shaft onto PTO shaft of the tractor until pins engage.

The PTO shaft is fitted with a non-rotating safety guard. It should be secured to the machine and tractor with the two retaining chains provided.

Spearhead Multicut 300

Setting Up & Adjustment

Height

Cutting height adjustment is achieved by raising or lowering the wheels. Lowering the wheels produces a longer cut, raising the wheels leaves a shorter cut. Always set machine level front to rear and side to side.

The weight of the machine should be equally distributed between the tractor and the wheels. When set properly this should prevent scalping.

Machine Protection

To prevent gearbox damage the PTO is fitted with either a shear bolt or knocking clutch. When cutting in extreme conditions where solid objects are likely to be found it is recommended the operator reduces the engine revs to allow the blades to pivot more easily when striking solid objects, and proceed with caution.

The shear bolt or clutch settings should not be altered without reference to the Spearhead Service Department. Never operate without protection, this could result in severe damage to the gearbox and drive lines, as well as infringing the warranty.

Optional

Anti scalp dish may be fitted to the lower blade carriers to ease the machine over obstacles and prevent damage to the blades.

Operation

Engage the PTO only when the tractor engine is at low revs to prevent shock damage to the machine, slowly increase the engine revs to achieve the standard 1000 PTO speed. (As indicated on the sticker).

If at any time serious vibration occurs, stop the engine immediately and check that no blades are missing - following all safety precautions. The cause must be found and rectified immediately or other components may be affected.

Spearhead Multicut 300

Operation

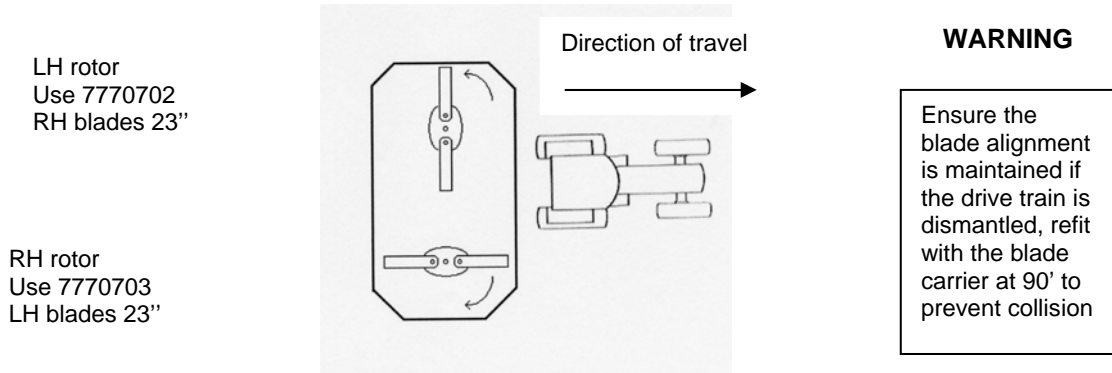
When in work, lower the machine to the ground carrying its weight on the wheels, allowing the machine to follow the contours of the ground and ensuring there is sufficient slack in the wire rope. Select a sensible forward speed bearing in mind the density of growth, the terrain, and the available horsepower, taking extra care when turning, particularly on slopes. When turning, it is not necessary to lift the machine off the ground but instead allow sufficient room to turn in a large radius. The machine only needs to be raised when turning in a tight corner or reversing over dense undergrowth or when operating on the front linkage. The machine is fitted with, as standard, 4 high lift blades complete with fin, to aid spreading/mulching.

Quality of finish is determined by the forward speed i.e. a slow speed will produce a high quality of cut, whereas faster forward speeds are used when high output is first priority.

When operating, particularly in confined areas, it is possible to cut going backwards but it is advisable to slightly raise the machine, particularly if in dense growth where there is a risk of hitting hidden solid obstacles obscured by dense undergrowth.

Always exercise particular care when operating over uneven ground surfaces. Do not allow the blades and blade holders to frequently hit the ground.

Direction of blades for machine with skirts



Transportation

Please observe Public Highway Regulations concerning the towing of implements, and securely attach a registration and lighting board. Take care to slow when travelling over rough ground and avoid bouncing machine on linkage causing unnecessary strain.

Maximum speed with a mounted implement is 20mph (30 km/h)

Spearhead Multicut 300

Service & Maintenance

Safety First

- Never leave the tractor seat without first disengaging the PTO and stopping the engine.
- Ensure all rotating parts have stopped turning.
- Never attempt any repairs, maintenance, service or any other checks with the machine carried on the tractor hydraulics.
- Always fully lower to the ground, or securely prop the machine on substantial servicing stands.
- Always replace all guards and retaining chains after servicing/maintenance is completed.



Important

On delivery of your machine check that the dealer has completed the P.D.I. form ensure the warranty registration form is completed and returned.

It is imperative that the following checks are carried out in order not to invalidate your warranty; these are carried out **before the first operation, after the first hour**, then **after 4 hours**. These checks are:

- Wheel nuts and tyre pressure (50psi)
- Gearbox bolts
- Blade bolts are fully tightened and in particular the castle headed nut on the blade rotor
- Retaining bolts on the drive shaft
- Grease all points
- After the first 50 hours drain and replace the gearbox oil. Replace with EP90 Gear oil
- It is your responsibility to maintain, to ensure a long reliable working life

Torque Settings

The Torque figures given below are recommended maximum settings only.

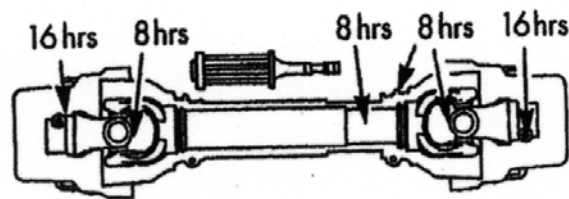
Size:	Tensile strength:	Description:	Torque setting: Nm
M16	8.8	Gearbox bolts	280
M16	8.8	Blade carriers	280
M24	8.8	Blade bolts	950

Spearhead Multicut 300

Daily / Every 8 hours

- Grease all grease points, on PTO, including secondary drive line under the center guard
- Check condition of blades and blade bushes and ensure all retaining bolts are fully tight.
- Check gearbox oil, replenish with 'EP90' gear oil as necessary to the correct level line on the dipstick provided with each gearbox.
- Dismantle and clean PTO sliding surfaces and re-grease. Grease universal joints (Fig. 3).

Fig. 3



Every 16 hours

- Grease PTO inner tube and push pins (Fig. 3)

Regularly

- Check there is no wrapping of string, plastic, grass or other debris between rotor boss and blades.
- Inspect gearbox seals for leaks.
- Regularly check the rotor boss retaining castle nut for tightness (part no.5771409). First remove the split pin, select the correct size (46mm) socket in 3/4" drive and fully tighten the nut. When replacing the split pin, do not slacken the nut to align the hole, always tighten. Failure to regularly check this nut will result in serious wear to hub, which is expensive to repair.
- It is most important that all gearbox and blade bolts are regularly checked to be very tight. **When the machine is new there will be a 'bedding in' period where very frequent checking is important.**

Spearhead Multicut 300

Blades

Caution! When carrying out maintenance work on or near the blades be careful of free-swinging blades over-centring and falling. It is recommended that protective headgear, gloves and goggles are worn.

The blades can be re-sharpened by grinding the cutting edges and care must be taken that the blades are of the same weight and length after grinding. Do not over heat when grinding, as this will affect the hardness of the blades.

All the blades are free swinging and swivel on hardened steel bushes, which are easily replaced. When replacing blades, it is important that blades are replaced in sets, in order to retain balance of the rotor. Bushes must be replaced when new blades are to be fitted.

If the blades are showing any signs of severe wear, damage or cracking, they must be replaced immediately. Never attempt to weld the blades; this will make them very brittle thus extremely dangerous.

Do not take risks with the cutting blades - if in doubt, replace.

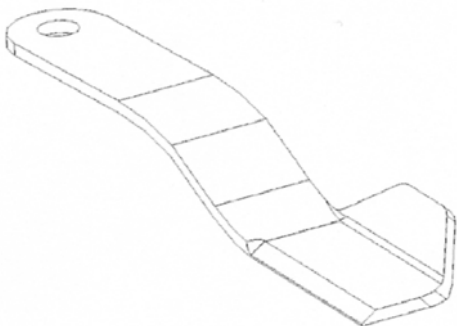


Warning

The slip clutch is there to protect the drive train. If the blades strike a large obstacle they may get damaged or break so avoid these conditions.

The two rotor blade carriers are timed to ensure the blades do not clash, ensure timing is correct after carrying out any maintenance to the drive line.

The upper blade carriers must be positioned at 90° to each other, if the driveline is dismantled for any maintenance they must be checked to ensure the swinging blades do not collide.



LH Blade 7770703

Spearhead Multicut 300

Skids

When operating on abrasive soils, particularly in stubbles and similar conditions with thin ground cover, excessive skid wear may be expected. To provide extra protection and to prolong life of the skids, special hard facing rods are available.

If working in wet and muddy conditions, ensure that debris is not allowed to build up on the deck.

Storage

Before storing away, thoroughly wash the machine removing all traces of grass and dirt. Great care must be taken when washing with high-pressure hoses, do not hold the water jet close to the paintwork. Use steam cleaners with caution, be sure to remove all detergents to avoid any discolouring or damage to paint.

Grease all grease points until fresh grease shows. Store PTO shaft in a dry place.

After Storage

Check condition of the tyre (where applicable) and then follow the maintenance procedure covered in the servicing part of this manual. Pay particular attention to the condition of guards and blades.

Remember the 3000 Swipe is designed to withstand the most rigorous conditions and, with a little care and attention, will give many years of trouble free service.

So as not to invalidate the warranty and to avoid problems, use only genuine parts and make sure the machine is not driven at a speed in excess of 540/1000 rpm on the PTO. As indicated on the speed sticker.

Spearhead Multicut 300

Trouble Shooting Guide

Broken or damaged blades

- Raise cutting height
- Avoid obstacles
- Timing incorrect
- Ensure a steady feed into drive (do not snatch the PTO)
- Fit anti scalp dish

Damage blade holders

- Raise cutting height
- Avoid obstacles
- Failure to keep centre retaining nut tight
- Fit anti scalp dish

Gearbox overheating

- Incorrect oil level
- Incorrect grade of oil
- Incorrect operating speed
- Machine overloaded
- Rubbish around the gearbox reducing air circulation

Shear bolt failure

- Machine overloaded
- PTO engaged with too much power/revs
- Blades hitting the ground

Damage to rubber bonded Yoke

- Shock loading from either poor start-up or blades hitting something

Damage to PTO shaft & gearboxes

- Inoperative torque limiter
- Seized slip clutch
- Telescopic tube bottoming out
- Engaging drive with too much power/revs
- Lifting machine too high
- Not enough overlap
- Lack of grease on sliding tubes of drive shaft
- Shock loading as a result of impact damage due to the blade carrier striking an obstacle.

Metal fatigue on frame

- Too fast a travelling or operating speed for the conditions
- Machine not floating, i.e. not following the ground controls (check position of top link).

Spearhead Multicut 300

When ordering parts please refer to your parts list to help your dealer with your order.

Part number and quantity
Description
Machine model number
Serial number of the machine
Delivery instructions (e.g. next day).

Delivery is normally via carrier direct to your dealer. Please check with your dealer for stock availability and arrangement of dispatch. Ensure you or your dealer has sufficient cover for parts requirement outside factory hours.

When ordering your seal kits please quote both codes stamped on the base of the cylinder.

Important Note

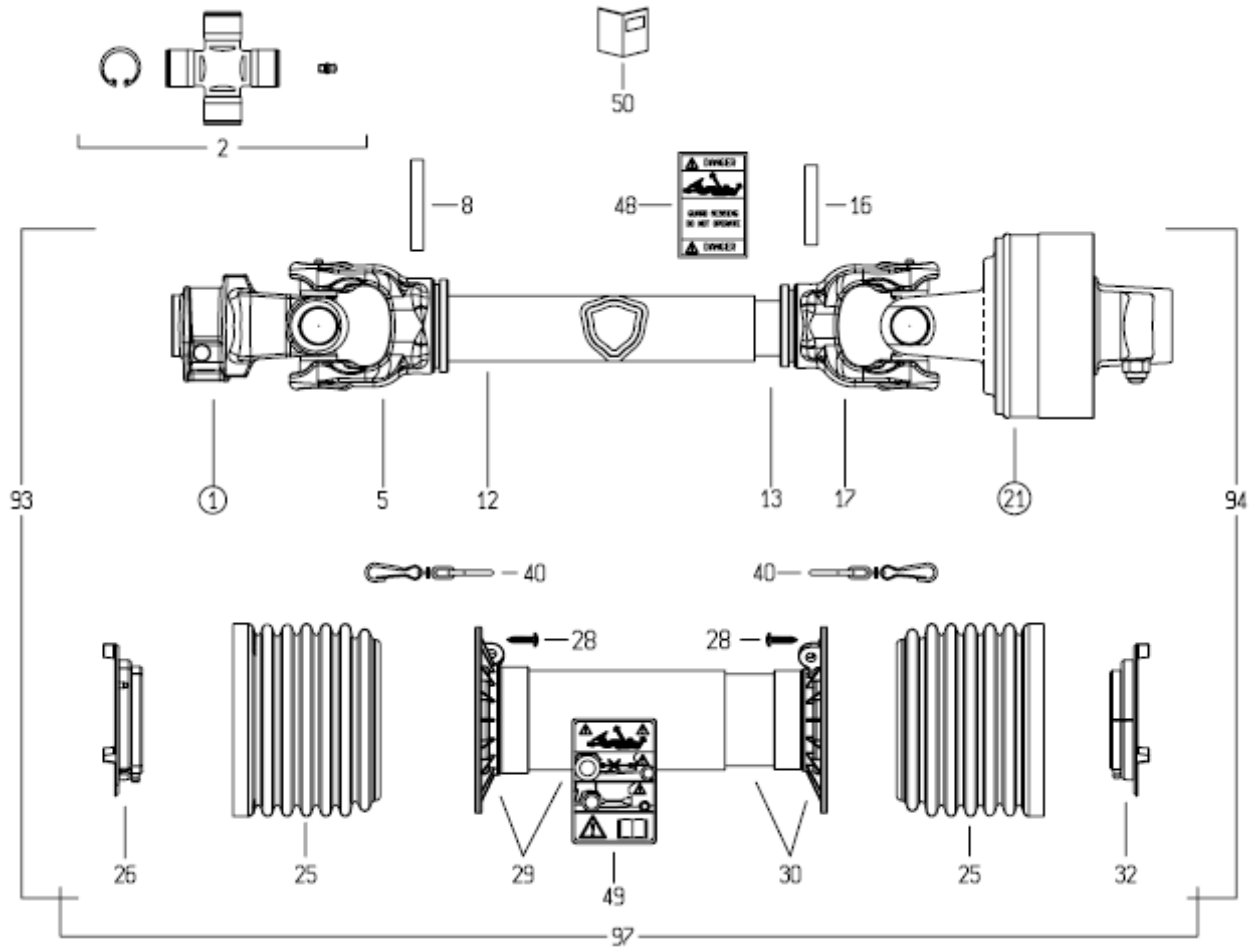
The information contained in this manual is correct at the time of publication. However, in the course of constant development, changes in specification are inevitable. Should you find the information given in this book different to the machine it relates to, please contact the "After Sales Department" for advise.

Key:

(LH) = Left hand
(RH) = *Right hand*

Spearhead Multicut 300

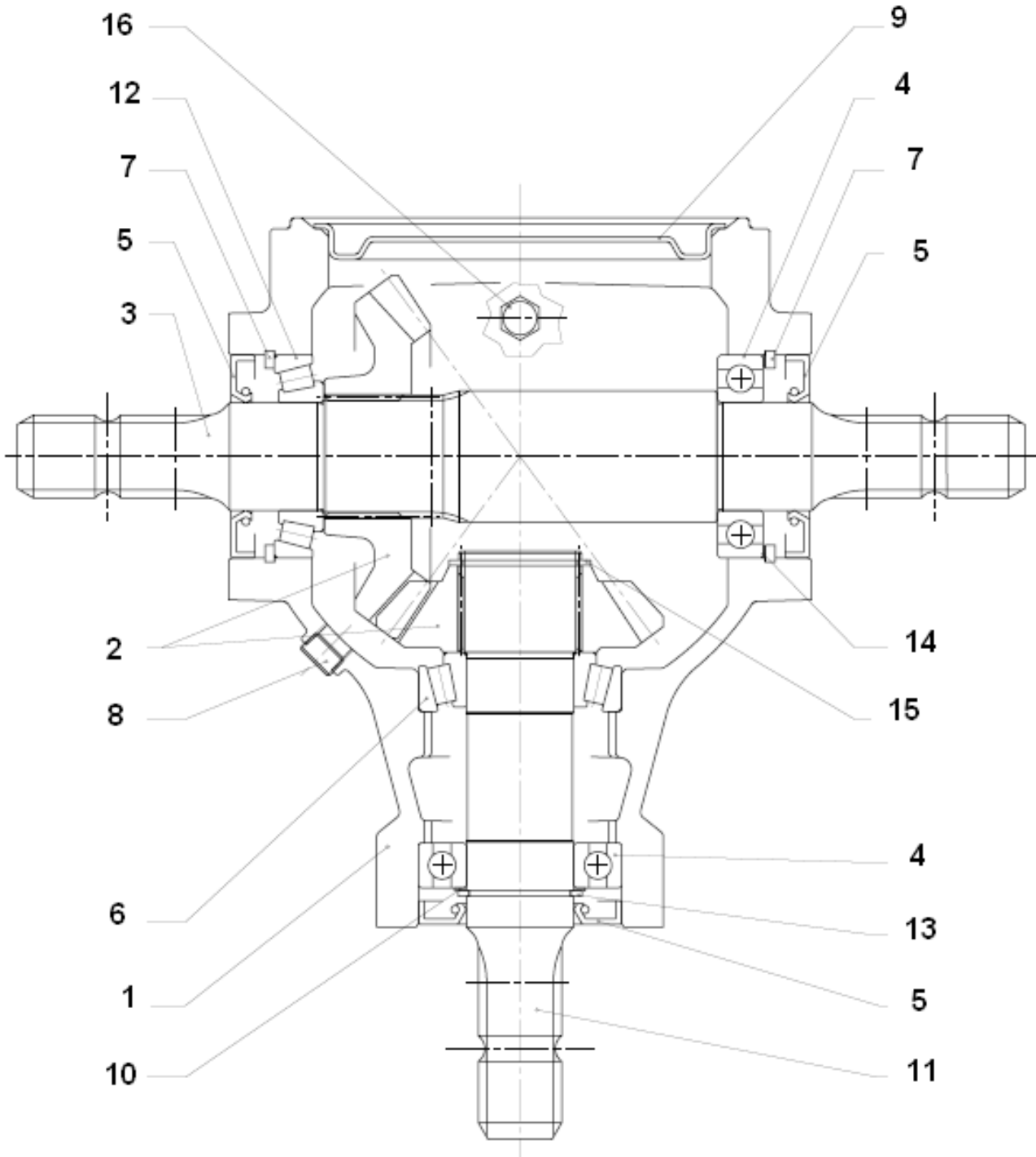
PTO Shaft Assembly 5770527/5770533



REF NO.	PART NO.	DESCRIPTION.
	5770527	INPUT PTO SHAFT - 1000RPM
	5770533	INPUT PTO SHAFT - 540RPM
1	5770527.01	YOKE - TRACTOR END
2	5770527.02	CROSS JOURNAL
5	5770527.03	YOKE - IN-BOARD OUTER
8	5770527.04	PIN
12	5770527.05	OUTER TUBE
13	5770527.06	INNER TUBE
16	5770527.07	PIN
17	5770527.08	YOKE - IN-BOARD INNER
21	5770527.09	CLUTCH - 1700NM
21	5770533.01	CLUTCH - 2100NM
97	5770527.10	GUARD KIT

Spearhead Multicut 300

Centre Gearbox 5769992



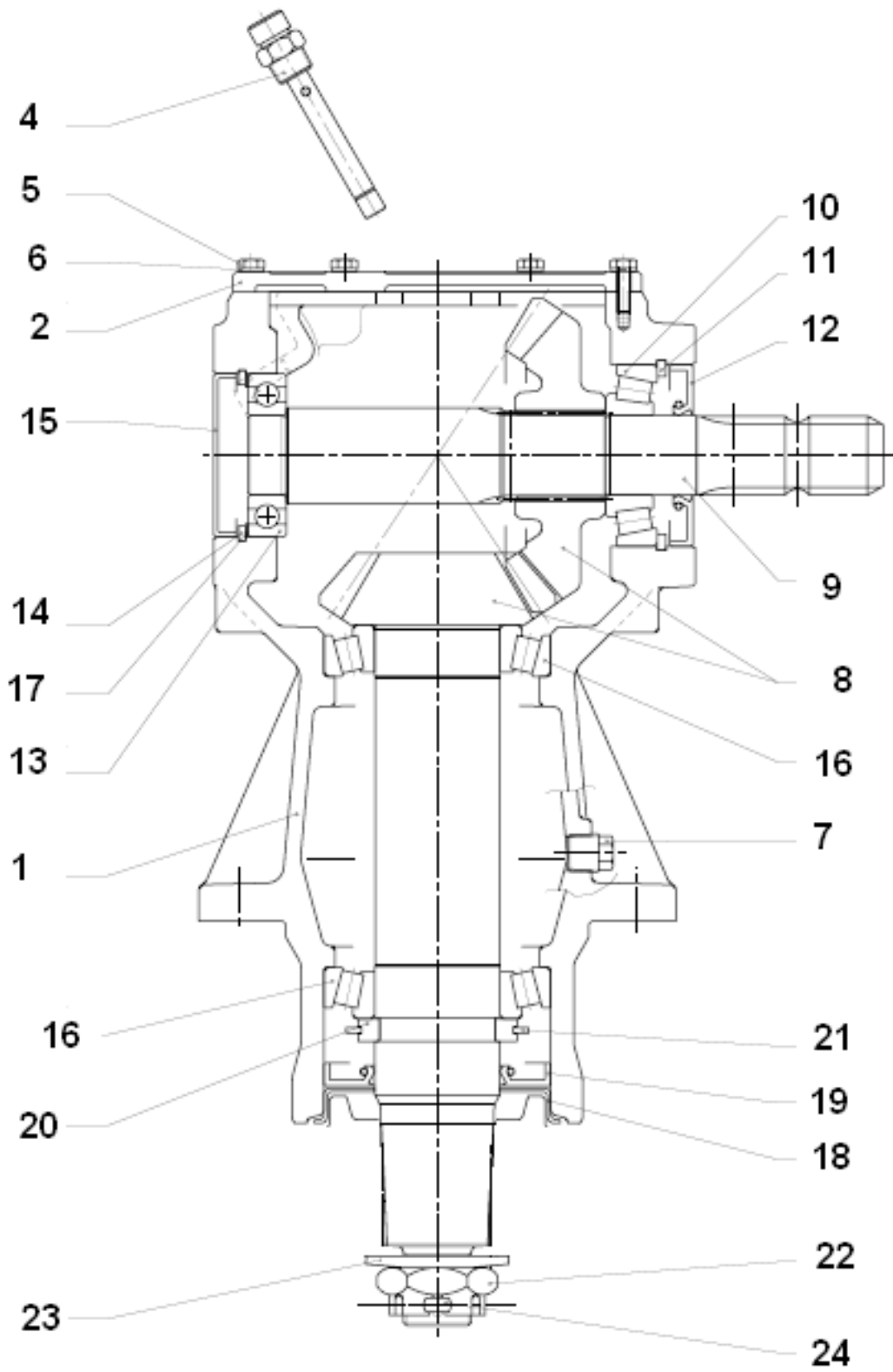
Spearhead Multicut 300

Centre Gearbox 5769992

REF. NO	PART NO.	DESCRIPTION
	5769992	GEARBOX ASSY 6 SPLINE 1000RPM
1	N/A	GEARBOX CASING
2	5771501	GEAR SET
3	5771506	SHAFT – 6 SPLINE
4	4771599	BEARING
5	4771507	SEAL
6	4770660	BEARING
7	2777518	CIRCLIP
8	5777208	PLUG
9	5771507	GUARD / COVER
10	2777518	CIRCLIP
11	5771424A	SHAFT – 6 SPLINE
12	5772341	BEARING
13	5772349	CIRCLIP
14	5772362	SHIMS
	5772363	SHIMS
	5772364	SHIMS
	5772365	SHIMS
15	5772336	SHIMS
	5772337	SHIMS
	5772338	SHIMS
	5772339	SHIMS
16	5777204	BREATHER

Spearhead Multicut 300

Rotor Gearbox 5770002



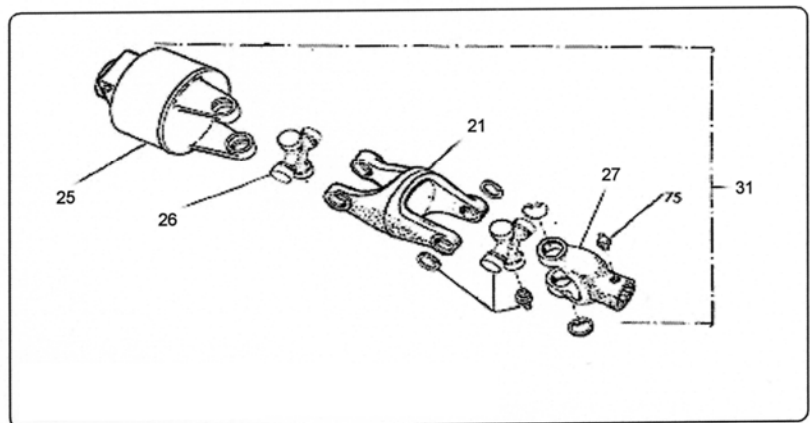
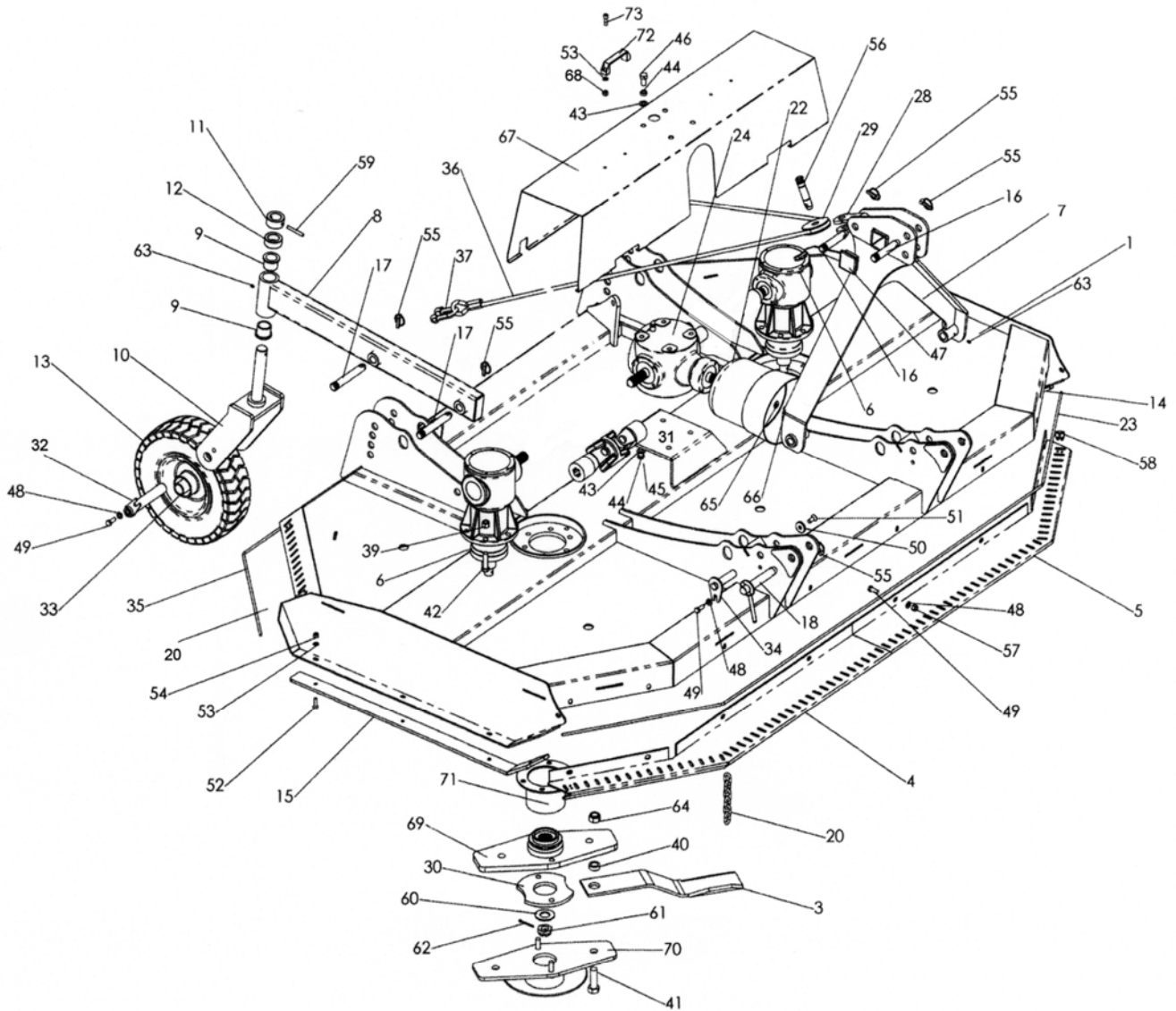
Spearhead Multicut 300

Rotor Gearbox 5770002

REF. NO	PART NO.	DESCRIPTION
	5770002	LH AND RH ASSEMBLY – 6 SPLINE
1	N/A	HOUSING
2	5771401	GUARD / COVER
3	N/A	GASKET
4	5771416	DIPSTICK
5	5771407	BOLT
6	2771408	WASHER
7	5771415	PLUG
8	5771419	GEAR SET
9	5771403R	SHAFT
10	4771601	BEARING
11	2771129	CIRCLIP
12	4771124	OIL SEAL
13	4771600	BEARING
14	2771108	CIRCLIP
15	4771503	CAP
16	4771602	BEARING
17	5771423	SHIM SET
18	5771406	GUARD / COVER
19	4771500	OIL SEAL
20	5771422	COLLET
21	2771600	CIRCLIP
22	5771409	NUT
23	5771410	WASHER
24	2770477	PIN

Spearhead Multicut 300

Main Frame



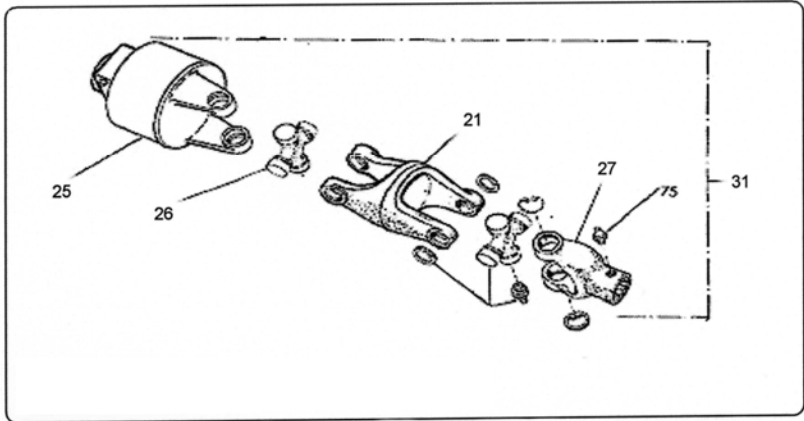
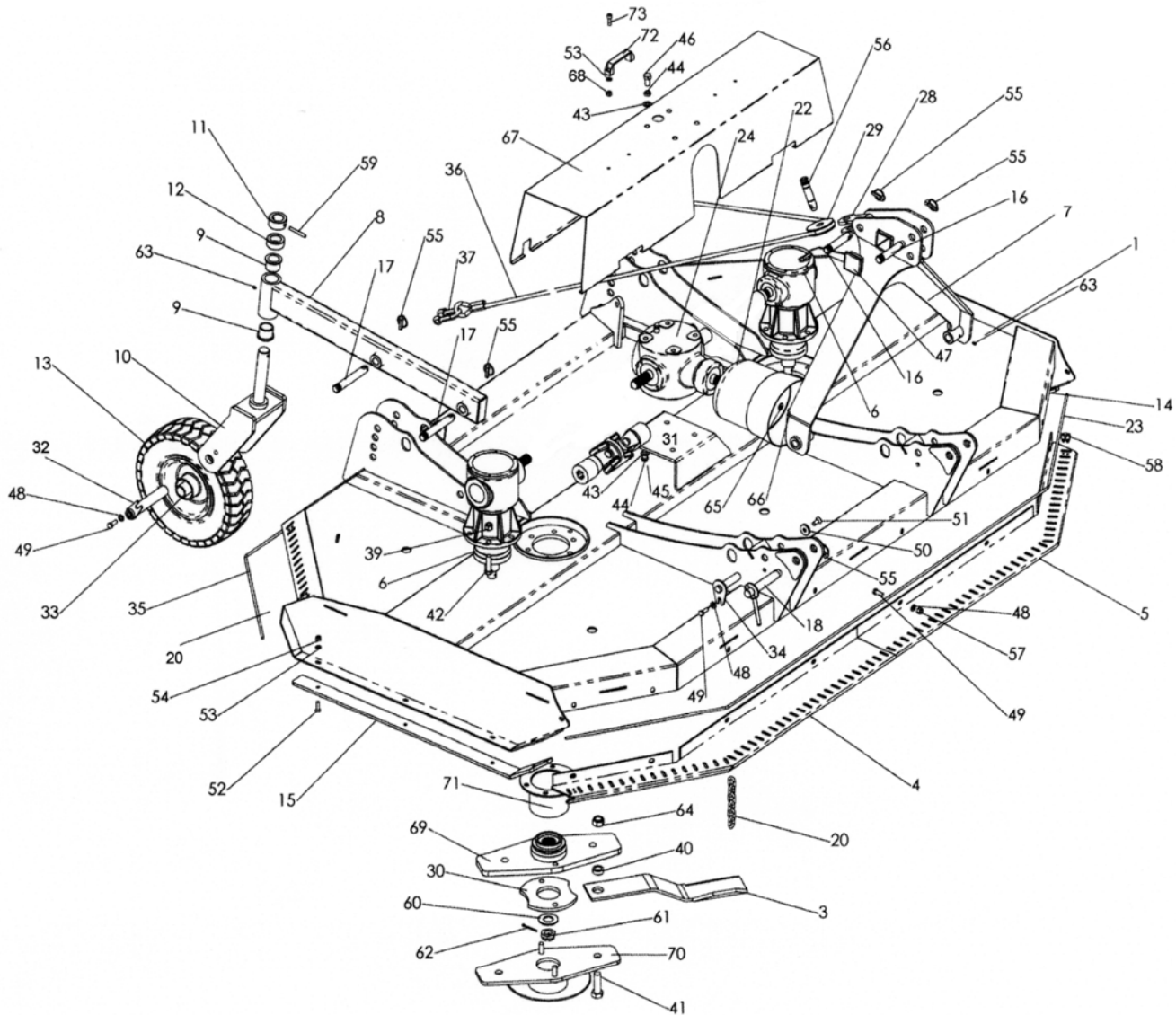
Spearhead Multicut 300

Main Frame

REF. NO	PART NO.	DESCRIPTION
1	1770400B	BODY
3	7770702	BLADE RH
	7770703	BLADE LH
4	1770404A	BRACKET RH
5	1770403A	BRACKET LH
6	5770002	GEARBOX 6 SPLINE
7	1777613A	HEADSTOCK
8	1770401A	ARM
9	4600127-A	BUSH
10	1770399A	YOKE
11	1777700	BUSH
12	1777524	SPACER
13	6770680	WHEEL ASSEMBLY
	4770816A	WHEEL BEARING
14	1770685A	SKID
15	1770685AR	SKID
16	6310203	PIN
17	6310235	PIN
18	6310208	PIN
21	5770092	DOUBLE YOKE
20	8770621	CHAIN
22	5770106	GUARD / COVER
23	6770925	WIRE ROPE
24	5769992	GEARBOX 6 SPLINE
25	5770124	BONDED YOKE
26	5771301	CROSS JOURNAL
27	5770065.01	6 SPLINE YOKE
28	1560120	BRACKET
29	1560121	PULLEY
30	1770396	SPACER
31	5770065A	COUPLING ASSEMBLY
32	1560130	PIN
33	1560131	BUSH
34	1777761	PIN
35	6770926	WIRE ROPE
36	6770922	WIRE ROPE
37	6777575	SHACKLE
39	2770447	NUT
40	7770707	BUSH
41	2770413	BOLT
42	2770423	BOLT
43	2770454	WASHER
44	2770456	WASHER
45	2770425	BOLT
46	2770473	BOLT
47	8777518	COVER

Spearhead Multicut 300

Main Frame



Spearhead Multicut 300

Main Frame

REF. NO	PART NO.	DESCRIPTION
48	2770436	WASHER
49	2770420	BOLT
50	1777209	WASHER
51	2770506	BOLT
52	2770509	BOLT
53	2770434	WASHER
54	2770412	NUT
55	6310206	PIN
56	6310203A	PIN
57	2770417	NUT
58	6770907	ADAPTOR
59	2770479	PIN
60	5771410	WASHER
61	5771409	NUT
62	2770512	PIN
63	2770467	GREASE NIPPLE
64	2770414	NUT
65	2770437	WASHER
66	2770418	BOLT
67	1770411A	GUARD
68	2770416	NUT
69	1770398A	UPPER BLADE CARRIER
70	1770397A	LOWER BLADE CARRIER
71	1770620	SHIELD
72	8777513	HANDLE
73	2770368	BOLT

Spearhead Machinery
Green View,
Salford Priors,
Evesham,
Worcestershire,
WR11 8SW

Tel: 01789 491860

Fax: 01789 778683

www.spearheadmachinery.com
enquiries@spearheadmachinery.com